

Datasheet for ABIN5542394  
**anti-THAP1 antibody (AA 1-213)**

## 5 Images

[Go to Product page](#)

## Overview

Quantity:	0.1 mg
Target:	THAP1
Binding Specificity:	AA 1-213
Reactivity:	Human
Host:	Mouse
Clonality:	Monoclonal
Conjugate:	This THAP1 antibody is un-conjugated
Application:	Western Blotting (WB), Immunohistochemistry (IHC), ELISA, Flow Cytometry (FACS), Immunocytochemistry (ICC)

## Product Details

Immunogen:	Purified recombinant fragment of human THAP1 (AA: 1-213) expressed in E. coli.
Clone:	8D10C8
Isotype:	IgG1
Purification:	purified

## Target Details

Target:	THAP1
Alternative Name:	THAP1 ( <a href="#">THAP1 Products</a> )
Background:	Description: The protein encoded by this gene contains a THAP domain, a conserved DNA-

## Target Details

binding domain. This protein colocalizes with the apoptosis response protein PAWR/PAR-4 in promyelocytic leukemia (PML) nuclear bodies, and functions as a proapoptotic factor that links PAWR to PML nuclear bodies. Alternatively spliced transcript variants encoding distinct isoforms have been observed.,

Aliases: DYT6

Molecular Weight: 24.9 kDa

Gene ID: 55145

HGNC: 55145

## Application Details

Application Notes: ELISA: 1:10000, WB: 1:500 - 1:2000, IHC: , ICC: 1:200 - 1:1000, FCM: 1:200 - 1:400

Restrictions: For Research Use only

## Handling

Format: Liquid

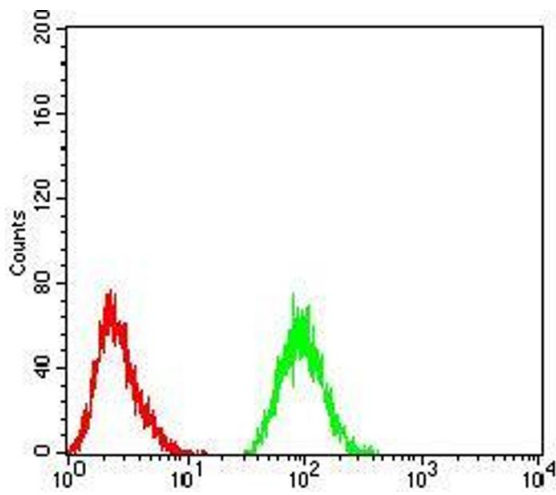
Buffer: Purified antibody in PBS with 0.05 % sodium azide

Preservative: Sodium azide

Precaution of Use: This product contains Sodium azide: a POISONOUS AND HAZARDOUS SUBSTANCE which should be handled by trained staff only.

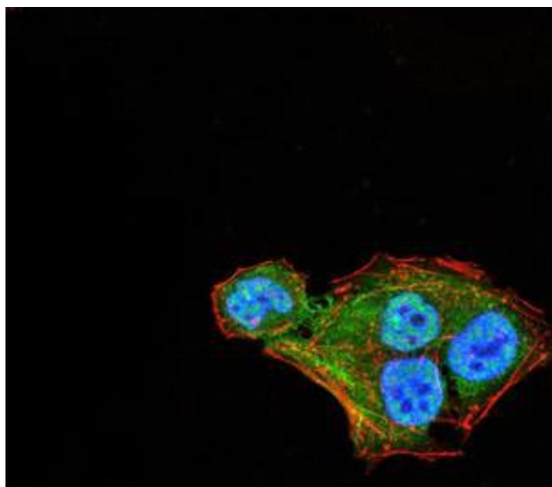
Storage: 4 °C/-20 °C

Storage Comment: 4°C, -20°C for long term storage



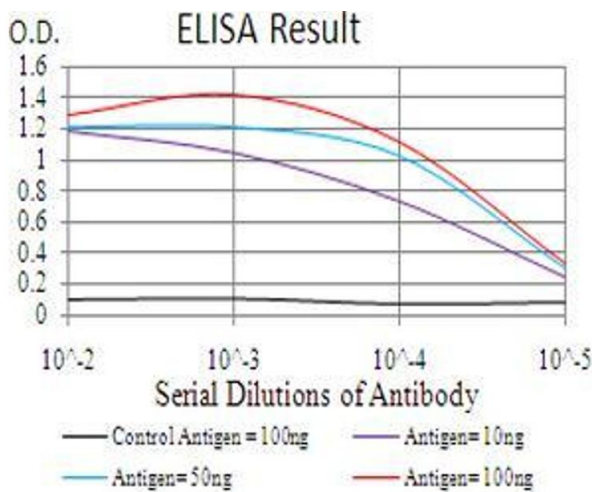
### Flow Cytometry

**Image 1.** Flow cytometric analysis of Jurkat cells using THAP1 mouse mAb (green) and negative control (red).



### Immunofluorescence

**Image 2.** Immunofluorescence analysis of HeLa cells using THAP1 mouse mAb (green). Blue: DRAQ5 fluorescent DNA dye. Red: Actin filaments have been labeled with Alexa Fluor-555 phalloidin. Secondary antibody from Fisher (Cat#: 35503)



### ELISA

**Image 3.** Black line: Control Antigen (100 ng), Purple line: Antigen(10 ng), Blue line: Antigen (50 ng), Red line: Antigen (100 ng),

Please check the [product details page](#) for more images. Overall 5 images are available for ABIN5542394.