

Datasheet for ABIN5542398
anti-TUBB1 antibody (AA 33-166)

8 Images

[Go to Product page](#)

Overview

Quantity:	0.1 mg
Target:	TUBB1
Binding Specificity:	AA 33-166
Reactivity:	Human, Mouse, Rat, Monkey
Host:	Mouse
Clonality:	Monoclonal
Conjugate:	This TUBB1 antibody is un-conjugated
Application:	Western Blotting (WB), ELISA, Immunohistochemistry (IHC), Immunocytochemistry (ICC), Flow Cytometry (FACS)

Product Details

Immunogen:	Purified recombinant fragment of human TUBB1 (AA: 33-166) expressed in E. coli.
Clone:	2A1A9
Isotype:	IgG1
Purification:	purified

Target Details

Target:	TUBB1
Alternative Name:	TUBB1 (TUBB1 Products)
Background:	This gene encodes a member of the beta tubulin protein family. Beta tubulins are one of two

Target Details

core protein families (alpha and beta tubulins) that heterodimerize and assemble to form microtubules. This protein is specifically expressed in platelets and megakaryocytes and may be involved in proplatelet production and platelet release. A mutations in this gene is associated with autosomal dominant macrothrombocytopenia. Two pseudogenes of this gene are found on chromosome Y.,

Molecular Weight: 50.3 kDa

Gene ID: 81027

HGNC: 81027

Pathways: [Microtubule Dynamics](#)

Application Details

Application Notes: ELISA: 1:10000, WB: 1:500 - 1:2000, IHC: 1:200 - 1:1000, ICC: 1:200 - 1:1000, FCM: 1:200 - 1:400

Restrictions: For Research Use only

Handling

Format: Liquid

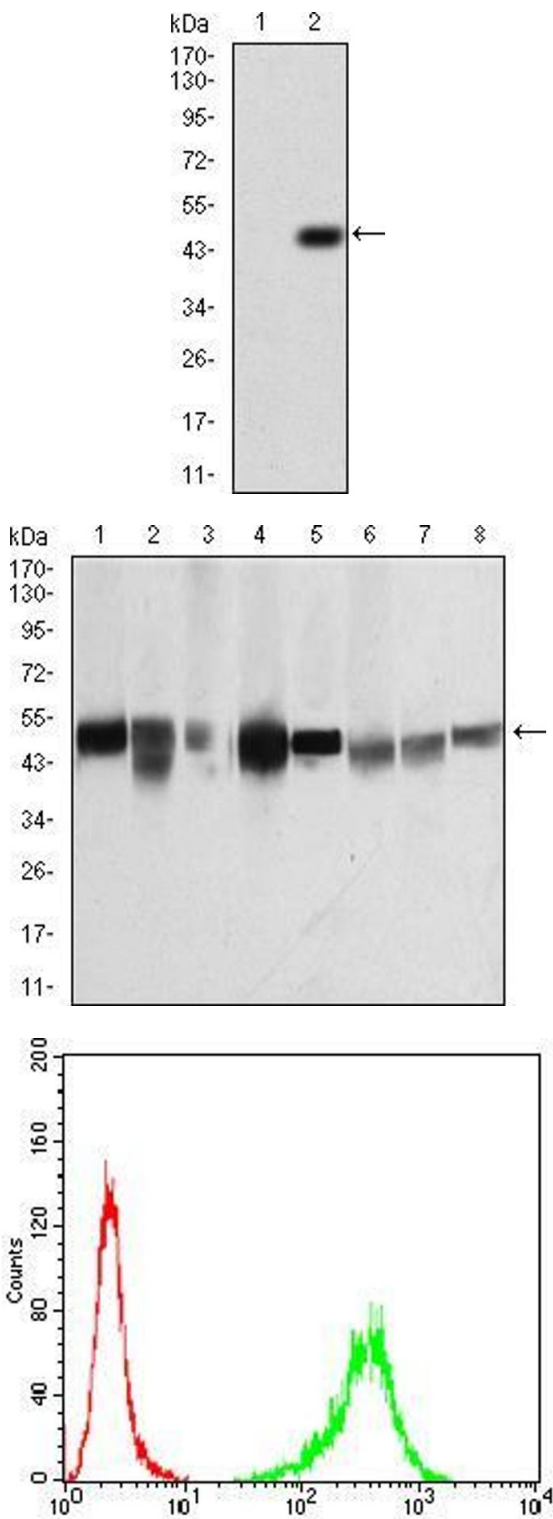
Buffer: Purified antibody in PBS with 0.05 % sodium azide

Preservative: Sodium azide

Precaution of Use: This product contains Sodium azide: a POISONOUS AND HAZARDOUS SUBSTANCE which should be handled by trained staff only.

Storage: 4 °C/-20 °C

Storage Comment: 4°C, -20°C for long term storage



Western Blotting

Image 1. Western blot analysis using TUBB1 mAb against HEK293 (1) and TUBB1 (AA: 33-166)-hlgGFc transfected HEK293 (2) cell lysate.

Western Blotting

Image 2. Western blot analysis using TUBB1 mouse mAb against K562 (1), HepG2 (2), A431 (3), Jurkat (4), Hela (5), NIH/3T3 (6), Cos7 (7) and PC12 (8) cell lysate.

Flow Cytometry

Image 3. Flow cytometric analysis of A431 cells using TUBB1 mouse mAb (green) and negative control (red).

Please check the [product details page](#) for more images. Overall 8 images are available for ABIN5542398.