

Datasheet for ABIN5542407  
**anti-WTAP antibody (AA 91-201)**

## 8 Images

[Go to Product page](#)

## Overview

Quantity:	0.1 mg
Target:	WTAP
Binding Specificity:	AA 91-201
Reactivity:	Human, Monkey
Host:	Mouse
Clonality:	Monoclonal
Conjugate:	This WTAP antibody is un-conjugated
Application:	Western Blotting (WB), ELISA, Immunohistochemistry (IHC), Immunocytochemistry (ICC), Flow Cytometry (FACS)

## Product Details

Immunogen:	Purified recombinant fragment of human WTAP (AA: 91-201) expressed in E. coli.
Clone:	6B6B6
Isotype:	IgG1
Purification:	purified

## Target Details

Target:	WTAP
Alternative Name:	WTAP ( <a href="#">WTAP Products</a> )
Background:	Description: The Wilms tumor suppressor gene WT1 appears to play a role in both

## Target Details

transcriptional and posttranscriptional regulation of certain cellular genes. This gene encodes a WT1-associating protein, which is a ubiquitously expressed nuclear protein. Like WT1 protein, this protein is localized throughout the nucleoplasm as well as in speckles and partially colocalizes with splicing factors. Alternative splicing of this gene results in several transcript variants encoding three different isoforms.,

Aliases: PNAS-132,hFL(2)D,KIAA0105

Molecular Weight:	44.2 kDa
-------------------	----------

Gene ID:	9589
----------	------

HGNC:	9589
-------	------

## Application Details

Application Notes:	ELISA: 1:10000, WB: 1:500 - 1:2000, IHC: 1:200 - 1:1000, ICC: 1:200 - 1:1000, FCM: 1:200 - 1:400
--------------------	--

Restrictions:	For Research Use only
---------------	-----------------------

## Handling

Format:	Liquid
---------	--------

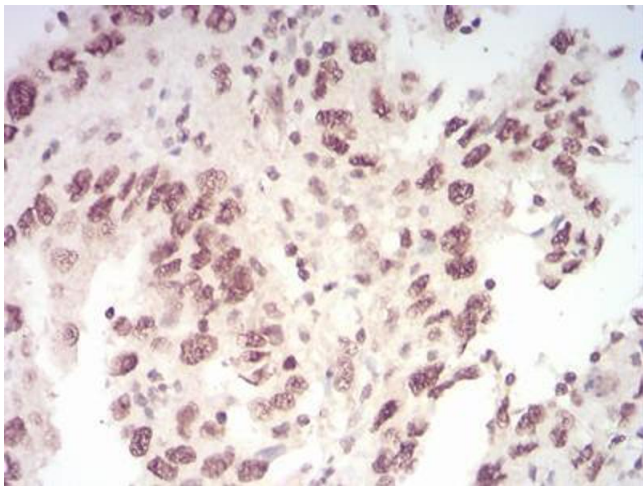
Buffer:	Purified antibody in PBS with 0.05 % sodium azide
---------	---

Preservative:	Sodium azide
---------------	--------------

Precaution of Use:	This product contains Sodium azide: a POISONOUS AND HAZARDOUS SUBSTANCE which should be handled by trained staff only.
--------------------	--

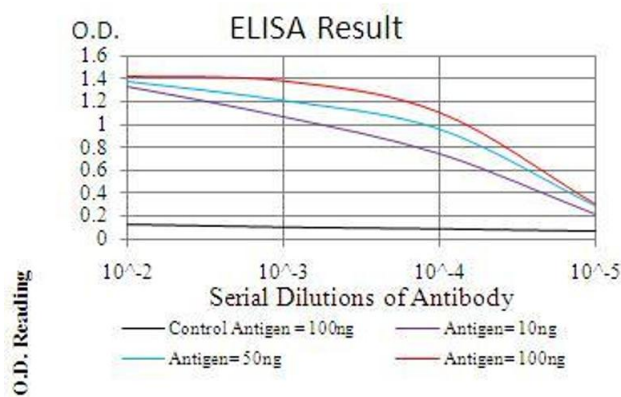
Storage:	4 °C/-20 °C
----------	-------------

Storage Comment:	4°C, -20°C for long term storage
------------------	----------------------------------



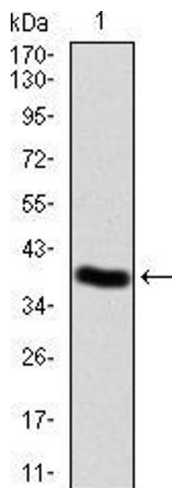
Immunohistochemistry

**Image 1.** Immunohistochemical analysis of paraffin-embedded endometrial cancer tissues using WTAP mouse mAb with DAB staining.



ELISA

**Image 2.** Black line: Control Antigen (100 ng), Purple line: Antigen(10 ng), Blue line: Antigen (50 ng), Red line: Antigen (100 ng),



Western Blotting

**Image 3.** Western blot analysis using WTAP mAb against human WTAP (AA: 91-201) recombinant protein. (Expected MW is 38.7 kDa)

Please check the [product details page](#) for more images. Overall 8 images are available for ABIN5542407.