



[Go to Product page](#)

Datasheet for ABIN5542411

anti-Phospholipase D2 antibody (AA 834-933)

8 Images

Overview

Quantity:	0.1 mg
Target:	Phospholipase D2 (PLD2)
Binding Specificity:	AA 834-933
Reactivity:	Human
Host:	Mouse
Clonality:	Monoclonal
Conjugate:	This Phospholipase D2 antibody is un-conjugated
Application:	Western Blotting (WB), ELISA, Immunohistochemistry (IHC), Flow Cytometry (FACS), Immunocytochemistry (ICC)

Product Details

Immunogen:	Purified recombinant fragment of human PLD2 (AA: 834-933) expressed in E. coli.
Clone:	7E4D9
Isotype:	IgG1
Purification:	purified

Target Details

Target:	Phospholipase D2 (PLD2)
Alternative Name:	PLD2 (PLD2 Products)
Background:	The protein encoded by this gene catalyzes the hydrolysis of phosphatidylcholine to

Target Details

phosphatidic acid and choline. The activity of the encoded enzyme is enhanced by phosphatidylinositol 4,5-bisphosphate and ADP-ribosylation factor-1. This protein localizes to the peripheral membrane and may be involved in cytoskeletal organization, cell cycle control, transcriptional regulation, and/or regulated secretion. Two transcript variants encoding different isoforms have been found for this gene.

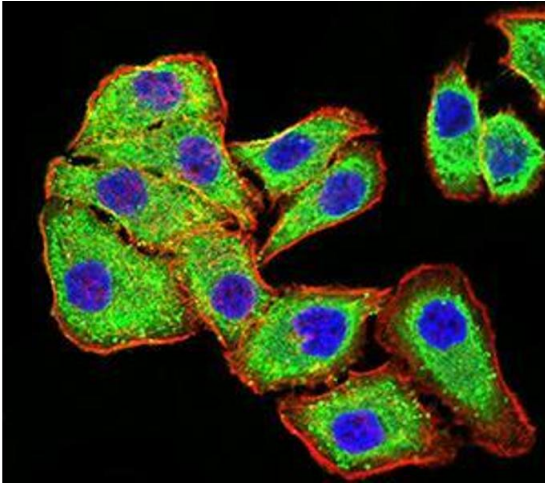
Molecular Weight:	106 kDa
Gene ID:	5338
HGNC:	5338
Pathways:	RTK Signaling , Regulation of Leukocyte Mediated Immunity , Positive Regulation of Immune Effector Process , Regulation of G-Protein Coupled Receptor Protein Signaling

Application Details

Application Notes:	ELISA: 1:10000, WB: 1:500 - 1:2000, IHC: 1:200 - 1:1000, ICC: 1:200 - 1:1000, FCM: 1:200 - 1:400
Restrictions:	For Research Use only

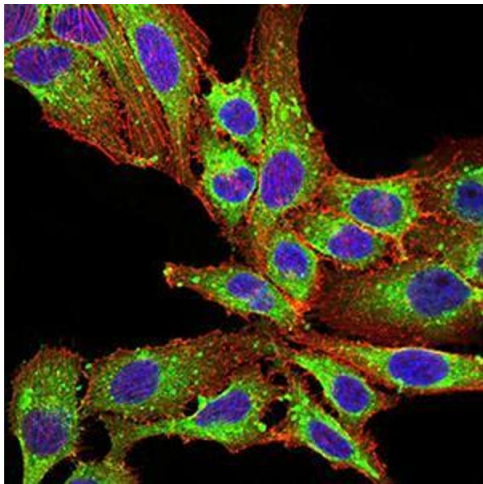
Handling

Format:	Liquid
Buffer:	Purified antibody in PBS with 0.05 % sodium azide
Preservative:	Sodium azide
Precaution of Use:	This product contains Sodium azide: a POISONOUS AND HAZARDOUS SUBSTANCE which should be handled by trained staff only.
Storage:	4 °C/-20 °C
Storage Comment:	4°C, -20°C for long term storage



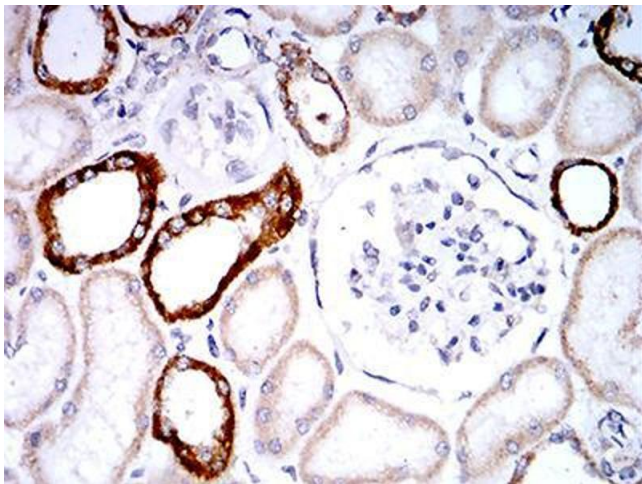
Immunocytochemistry

Image 1. Immunofluorescence analysis of MCF-7 cells using PLD2 mouse mAb (green). Blue: DRAQ5 fluorescent DNA dye. Red: Actin filaments have been labeled with Alexa Fluor- 555 phalloidin. Secondary antibody from Fisher



Immunocytochemistry

Image 2. Immunofluorescence analysis of SK-OV-3 cells using PLD2 mouse mAb (green). Blue: DRAQ5 fluorescent DNA dye. Red: Actin filaments have been labeled with Alexa Fluor- 555 phalloidin. Secondary antibody from Fisher



Immunohistochemistry

Image 3. Immunohistochemical analysis of paraffin-embedded renal tissues using PLD2 mouse mAb with DAB staining.

Please check the [product details page](#) for more images. Overall 8 images are available for ABIN5542411.