

Datasheet for ABIN5542416

anti-alpha Adducin antibody (AA 1-193)

5 Images

[Go to Product page](#)

Overview

Quantity:	0.1 mg
Target:	alpha Adducin (ADD1)
Binding Specificity:	AA 1-193
Reactivity:	Human
Host:	Mouse
Clonality:	Monoclonal
Conjugate:	This alpha Adducin antibody is un-conjugated
Application:	Western Blotting (WB), Immunohistochemistry (IHC), ELISA, Immunocytochemistry (ICC), Flow Cytometry (FACS)

Product Details

Immunogen:	Purified recombinant fragment of human ADD1 (AA: 1-193) expressed in E. coli.
Clone:	5D4H1
Isotype:	IgG1
Purification:	purified

Target Details

Target:	alpha Adducin (ADD1)
Alternative Name:	ADD1 (ADD1 Products)
Background:	Description: Adducins are a family of cytoskeleton proteins encoded by three genes (alpha,

Target Details

beta, gamma). Adducin is a heterodimeric protein that consists of related subunits, which are produced from distinct genes but share a similar structure. Alpha- and beta-adducin include a protease-resistant N-terminal region and a protease-sensitive, hydrophilic C-terminal region. Alpha- and gamma-adducins are ubiquitously expressed. In contrast, beta-adducin is expressed at high levels in brain and hematopoietic tissues. Adducin binds with high affinity to Ca(2+)/calmodulin and is a substrate for protein kinases A and C. Alternative splicing results in multiple variants encoding distinct isoforms, however, not all variants have been fully described.,

Aliases: ADDA

Molecular Weight: 81 kDa

Gene ID: 118

HGNC: 118

Pathways: [Negative Regulation of Hormone Secretion](#), [Regulation of Actin Filament Polymerization](#), [Regulation of Lipid Metabolism by PPARalpha](#), [ER-Nucleus Signaling](#)

Application Details

Application Notes: ELISA: 1:10000, WB: 1:500 - 1:2000, IHC: 1:200 - 1:1000, ICC: , FCM:

Restrictions: For Research Use only

Handling

Format: Liquid

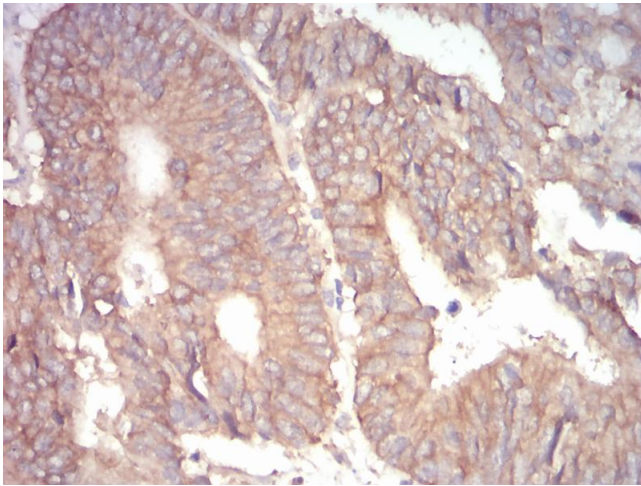
Buffer: Purified antibody in PBS with 0.05 % sodium azide

Preservative: Sodium azide

Precaution of Use: This product contains Sodium azide: a POISONOUS AND HAZARDOUS SUBSTANCE which should be handled by trained staff only.

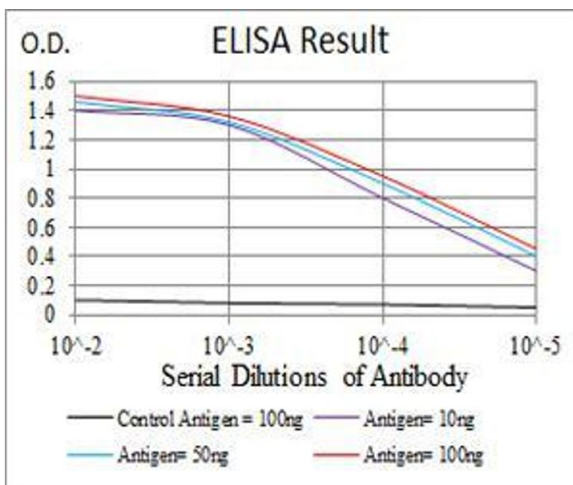
Storage: 4 °C/-20 °C

Storage Comment: 4°C, -20°C for long term storage



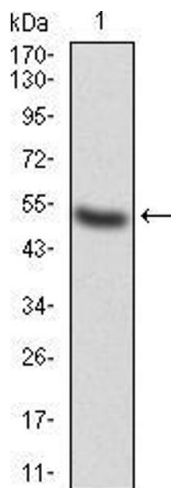
Immunohistochemistry

Image 1. Immunohistochemical analysis of paraffin-embedded rectum cancer tissues using 1-193 mouse mAb with DAB staining.



ELISA

Image 2. Black line: Control Antigen (100 ng), Purple line: Antigen(10 ng), Blue line: Antigen (50 ng), Red line: Antigen (100 ng),



Western Blotting

Image 3. Western blot analysis using ADD1 mAb against human ADD1 (AA: 1-193) recombinant protein. (Expected MW is 47.8 kDa)

Please check the [product details page](#) for more images. Overall 5 images are available for ABIN5542416.