

Datasheet for ABIN5542421  
**anti-CBX2 antibody (AA 402-525)**[Go to Product page](#)

## 4 Images

## Overview

Quantity:	0.1 mg
Target:	CBX2
Binding Specificity:	AA 402-525
Reactivity:	Human, Mouse
Host:	Mouse
Clonality:	Monoclonal
Conjugate:	This CBX2 antibody is un-conjugated
Application:	Western Blotting (WB), ELISA, Immunohistochemistry (IHC), Flow Cytometry (FACS), Immunocytochemistry (ICC)

## Product Details

Immunogen:	Purified recombinant fragment of human CBX2 (AA: 402-525) expressed in E. coli.
Clone:	4D10B2
Isotype:	IgG1
Purification:	purified

## Target Details

Target:	CBX2
Alternative Name:	CBX2 ( <a href="#">CBX2 Products</a> )
Background:	Description: This gene encodes a component of the polycomb multiprotein complex, which is

## Target Details

required to maintain the transcriptionally repressive state of many genes throughout development via chromatin remodeling and modification of histones. Disruption of this gene in mice results in male-to-female gonadal sex reversal. Mutations in this gene are also associated with gonadal dysgenesis in humans. Alternatively spliced transcript variants encoding different isoforms have been noted for this gene.,

Aliases: M33, CDCA6, SRXY5

Molecular Weight:	56 kDa
-------------------	--------

Gene ID:	84733
----------	-------

HGNC:	84733
-------	-------

## Application Details

Application Notes:	ELISA: 1:10000, WB: 1:500 - 1:2000, IHC: , ICC: , FCM:
--------------------	--

Restrictions:	For Research Use only
---------------	-----------------------

## Handling

Format:	Liquid
---------	--------

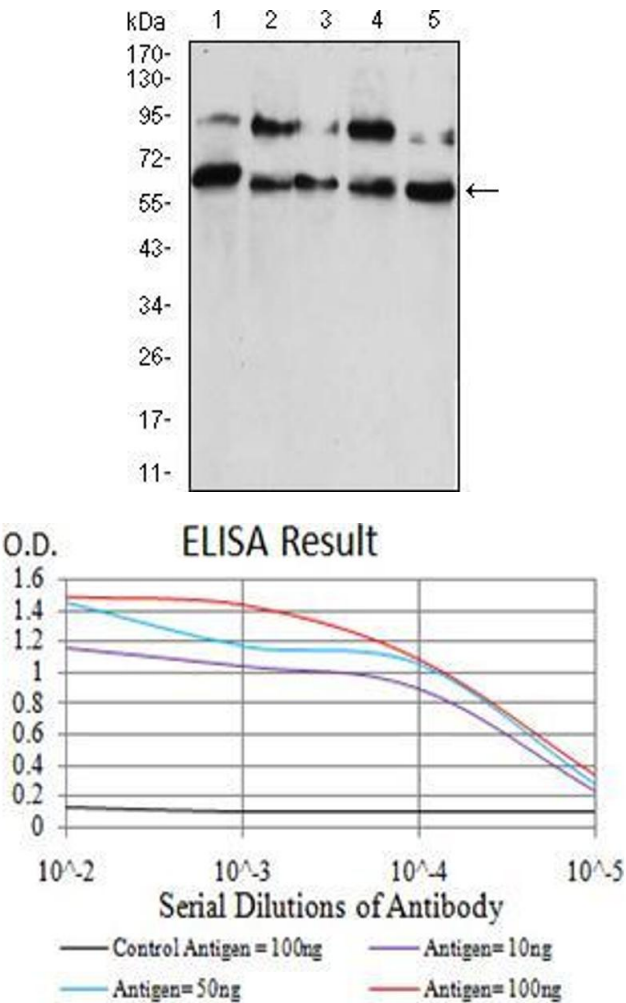
Buffer:	Purified antibody in PBS with 0.05 % sodium azide
---------	---

Preservative:	Sodium azide
---------------	--------------

Precaution of Use:	This product contains Sodium azide: a POISONOUS AND HAZARDOUS SUBSTANCE which should be handled by trained staff only.
--------------------	--

Storage:	4 °C/-20 °C
----------	-------------

Storage Comment:	4°C, -20°C for long term storage
------------------	----------------------------------

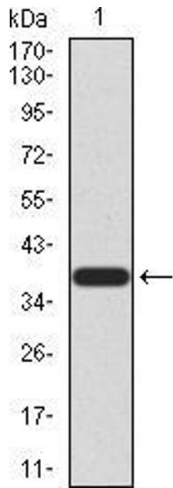


**Western Blotting**

**Image 1.** Western blot analysis using CBX2 mouse mAb against HUVEC (1), HEK293 (2), Hela (3), NIH/3T3 (4), and A431 (5) cell lysate.

**ELISA**

**Image 2.** Black line: Control Antigen (100 ng), Purple line: Antigen(10 ng), Blue line: Antigen (50 ng), Red line: Antigen (100 ng),



**Western Blotting**

**Image 3.** Western blot analysis using CBX2 mAb against human CBX2 (AA: 402-525) recombinant protein. (Expected MW is 38.2 kDa)

Please check the [product details page](#) for more images. Overall 4 images are available for ABIN5542421.