

Datasheet for ABIN5542422
anti-CBX2 antibody (AA 402-525)



[Go to Product page](#)

8 Images

Overview

Quantity:	100 µL
Target:	CBX2
Binding Specificity:	AA 402-525
Reactivity:	Human
Host:	Mouse
Clonality:	Monoclonal
Conjugate:	This CBX2 antibody is un-conjugated
Application:	Western Blotting (WB), ELISA, Immunohistochemistry (IHC), Flow Cytometry (FACS), Immunocytochemistry (ICC)

Product Details

Purpose:	CBX2 Antibody
Immunogen:	Purified recombinant fragment of human CBX2 (AA: 402-525) expressed in E. Coli.
Clone:	4C11B10
Isotype:	IgG1
Purification:	Purified antibody

Target Details

Target:	CBX2
Alternative Name:	CBX2 (CBX2 Products)

Target Details

Background: Description: This gene encodes a component of the polycomb multiprotein complex, which is required to maintain the transcriptionally repressive state of many genes throughout development via chromatin remodeling and modification of histones. Disruption of this gene in mice results in male-to-female gonadal sex reversal. Mutations in this gene are also associated with gonadal dysgenesis in humans. Alternatively spliced transcript variants encoding different isoforms have been noted for this gene.

Aliases: M33, CDCA6, SRXY5

Molecular Weight: 56kDa

Gene ID: 84733

HGNC: 84733

UniProt: [Q14781](#)

Application Details

Application Notes: ELISA: 1/10000
FCM: 1/200 - 1/400
ICC: 1/200 - 1/1000

Restrictions: For Research Use only

Handling

Format: Liquid

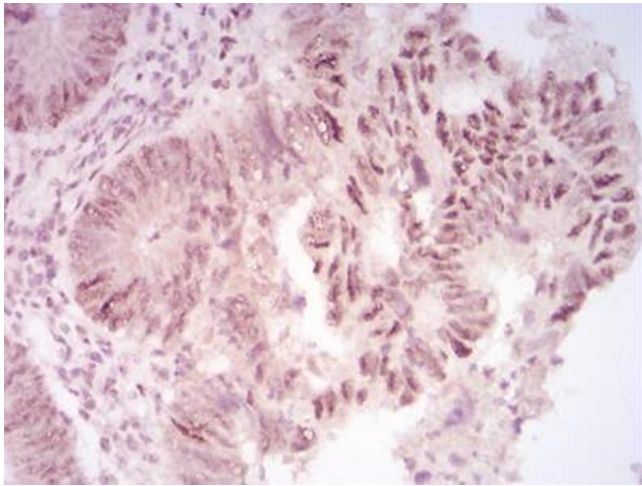
Buffer: Purified antibody in PBS with 0.05 % sodium azide.

Preservative: Sodium azide

Precaution of Use: This product contains Sodium azide: a POISONOUS AND HAZARDOUS SUBSTANCE which should be handled by trained staff only.

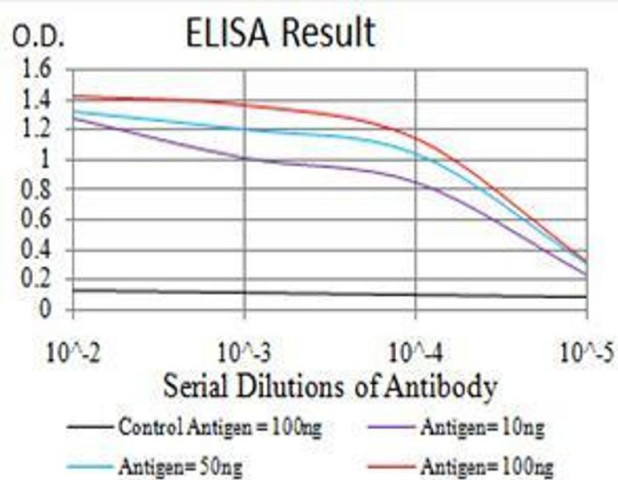
Storage: 4 °C, -20 °C

Storage Comment: Store at 4°C short term. Aliquot and store at -20°C long term. Avoid freeze/thaw cycles.



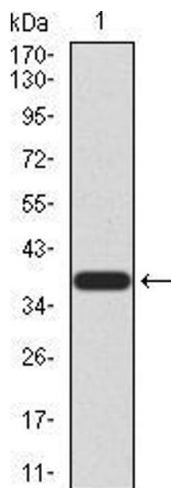
Immunohistochemistry

Image 1. Immunohistochemical analysis of paraffin-embedded rectum cancer tissues using CBX2 mouse mAb with DAB staining.



ELISA

Image 2. Black line: Control Antigen (100 ng), Purple line: Antigen(10 ng), Blue line: Antigen (50 ng), Red line: Antigen (100 ng),



Western Blotting

Image 3. Western blot analysis using CBX2 mAb against human CBX2 (AA: 402-525) recombinant protein. (Expected MW is 38.2 kDa)

Please check the [product details page](#) for more images. Overall 8 images are available for ABIN5542422.