

Datasheet for ABIN5542426
anti-Calretinin antibody (AA 1-271)

5 Images

[Go to Product page](#)

Overview

Quantity:	0.1 mg
Target:	Calretinin (CALB2)
Binding Specificity:	AA 1-271
Reactivity:	Human
Host:	Mouse
Clonality:	Monoclonal
Conjugate:	This Calretinin antibody is un-conjugated
Application:	Western Blotting (WB), Immunohistochemistry (IHC), ELISA, Immunocytochemistry (ICC), Flow Cytometry (FACS)

Product Details

Immunogen:	Purified recombinant fragment of human CALB2 (AA: 1-271) expressed in E. coli.
Clone:	1F5H1
Isotype:	IgG1
Purification:	purified

Target Details

Target:	Calretinin (CALB2)
Alternative Name:	CALB2 (CALB2 Products)
Background:	Description: This gene encodes an intracellular calcium-binding protein belonging to the

Target Details

troponin C superfamily. Members of this protein family have six EF-hand domains which bind calcium. This protein plays a role in diverse cellular functions, including message targeting and intracellular calcium buffering. It also functions as a modulator of neuronal excitability, and is a diagnostic marker for some human diseases, including Hirschsprung disease and some cancers. Alternative splicing results in multiple transcript variants.,

Aliases: CR, CAL2, CAB29

Molecular Weight:	31.5 kDa
-------------------	----------

Gene ID:	794
----------	-----

HGNC:	794
-------	-----

Application Details

Application Notes:	ELISA: 1:10000, WB: 1:500 - 1:2000, IHC: 1:200 - 1:1000, ICC: , FCM: 1:200 - 1:400
--------------------	--

Restrictions:	For Research Use only
---------------	-----------------------

Handling

Format:	Liquid
---------	--------

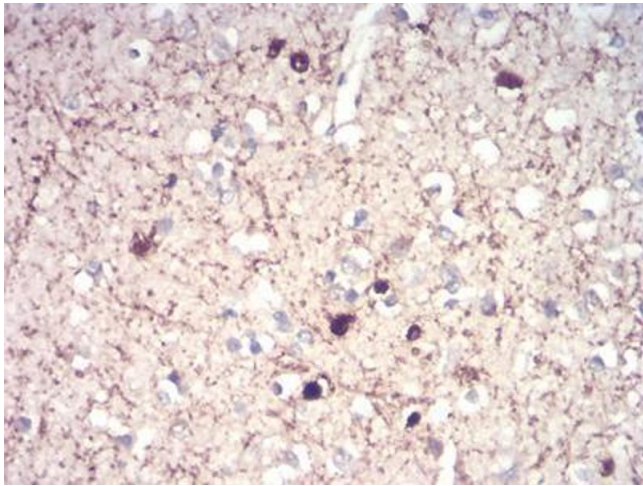
Buffer:	Purified antibody in PBS with 0.05 % sodium azide
---------	---

Preservative:	Sodium azide
---------------	--------------

Precaution of Use:	This product contains Sodium azide: a POISONOUS AND HAZARDOUS SUBSTANCE which should be handled by trained staff only.
--------------------	--

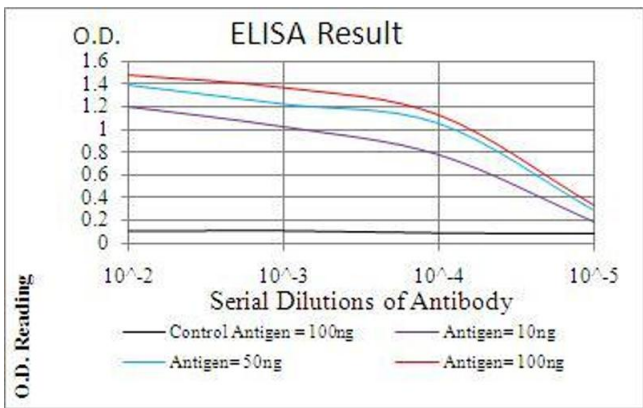
Storage:	4 °C/-20 °C
----------	-------------

Storage Comment:	4°C, -20°C for long term storage
------------------	----------------------------------



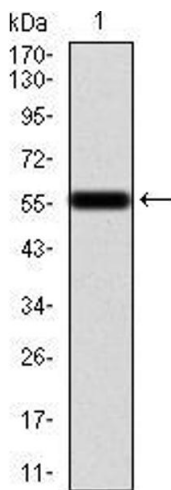
Immunohistochemistry

Image 1. Immunohistochemical analysis of paraffin-embedded brain tissues using CALB2 mouse mAb with DAB staining.



ELISA

Image 2. Black line: Control Antigen (100 ng), Purple line: Antigen(10 ng), Blue line: Antigen (50 ng), Red line: Antigen (100 ng),



Western Blotting

Image 3. Western blot analysis using CALB2 mAb against human CALB2 (AA: 1-271) recombinant protein. (Expected MW is 57.5 kDa)

Please check the [product details page](#) for more images. Overall 5 images are available for ABIN5542426.