



[Go to Product page](#)

Datasheet for ABIN5542430
anti-CGB antibody (AA 21-165)

3 Images

Overview

Quantity:	0.1 mg
Target:	CGB
Binding Specificity:	AA 21-165
Reactivity:	Human
Host:	Mouse
Clonality:	Monoclonal
Conjugate:	This CGB antibody is un-conjugated
Application:	ELISA, Western Blotting (WB), Immunohistochemistry (IHC), Immunocytochemistry (ICC), Flow Cytometry (FACS)

Product Details

Immunogen:	Purified recombinant fragment of human CGB (AA: 21-165) expressed in E. coli.
Clone:	4B8B3
Isotype:	IgG1
Purification:	purified

Target Details

Target:	CGB
Alternative Name:	CGB (CGB Products)
Background:	Description: This gene is a member of the glycoprotein hormone beta chain family and encodes

Target Details

the beta 3 subunit of chorionic gonadotropin (CG). Glycoprotein hormones are heterodimers consisting of a common alpha subunit and an unique beta subunit which confers biological specificity. CG is produced by the trophoblastic cells of the placenta and stimulates the ovaries to synthesize the steroids that are essential for the maintenance of pregnancy. The beta subunit of CG is encoded by 6 genes which are arranged in tandem and inverted pairs on chromosome 19q13.3 and contiguous with the luteinizing hormone beta subunit gene.,
Aliases: CGB3, CGB5, CGB7, CGB8, hCGB

Molecular Weight:	17.7 kDa
-------------------	----------

Gene ID:	1082
----------	------

HGNC:	1082
-------	------

Application Details

Application Notes:	ELISA: 1:10000, WB: 1:500 - 1:2000, IHC: , ICC: , FCM:
--------------------	--

Restrictions:	For Research Use only
---------------	-----------------------

Handling

Format:	Liquid
---------	--------

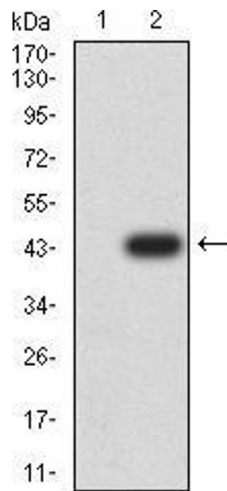
Buffer:	Purified antibody in PBS with 0.05 % sodium azide
---------	---

Preservative:	Sodium azide
---------------	--------------

Precaution of Use:	This product contains Sodium azide: a POISONOUS AND HAZARDOUS SUBSTANCE which should be handled by trained staff only.
--------------------	--

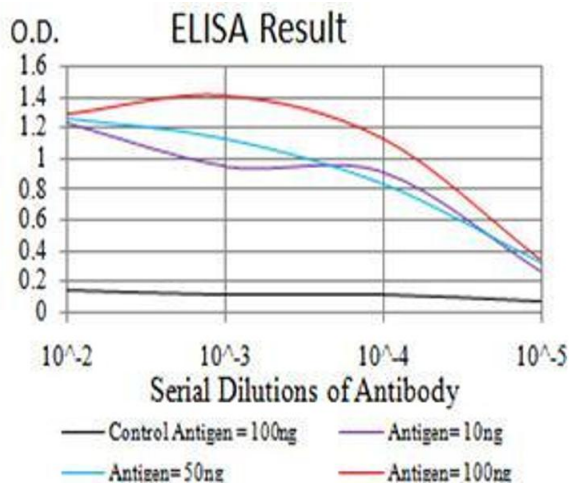
Storage:	4 °C/-20 °C
----------	-------------

Storage Comment:	4°C, -20°C for long term storage
------------------	----------------------------------



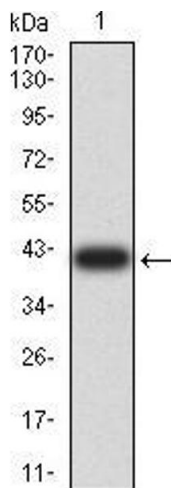
Western Blotting

Image 1. Western blot analysis using CGB mAb against HEK293 (1) and CGB (AA: 21-165)-hlgGfc transfected HEK293 (2) cell lysate.



ELISA

Image 2. Black line: Control Antigen (100 ng), Purple line: Antigen (10 ng), Blue line: Antigen (50 ng), Red line: Antigen (100 ng)



Western Blotting

Image 3. Western blot analysis using CGB mAb against human CGB (AA: 21-165) recombinant protein. (Expected MW is 41.4 kDa)