



[Go to Product page](#)

Datasheet for ABIN5542446
anti-APP antibody (AA 483-699)

4 Images

Overview

Quantity:	0.1 mg
Target:	APP
Binding Specificity:	AA 483-699
Reactivity:	Human
Host:	Mouse
Clonality:	Monoclonal
Conjugate:	This APP antibody is un-conjugated
Application:	Western Blotting (WB), ELISA, Flow Cytometry (FACS)

Product Details

Immunogen:	Purified recombinant fragment of human APP (AA: 483-699) expressed in E. coli.
Clone:	5H10A10
Isotype:	IgG2b
Purification:	purified

Target Details

Target:	APP
Alternative Name:	APP (APP Products)
Background:	Description: This gene encodes a cell surface receptor and transmembrane precursor protein that is cleaved by secretases to form a number of peptides. Some of these peptides are

Target Details

secreted and can bind to the acetyltransferase complex APBB1/TIP60 to promote transcriptional activation, while others form the protein basis of the amyloid plaques found in the brains of patients with Alzheimer disease. Mutations in this gene have been implicated in autosomal dominant Alzheimer disease and cerebroarterial amyloidosis (cerebral amyloid angiopathy). Multiple transcript variants encoding several different isoforms have been found for this gene.

Aliases: AAA, AD1, PN2, ABPP, APPI, CVAP, ABETA, PN-II, CTFgamma

Molecular Weight: 87 kDa

Gene ID: 351

HGNC: 351

Pathways: [Caspase Cascade in Apoptosis](#), [EGFR Signaling Pathway](#), [Transition Metal Ion Homeostasis](#), [Skeletal Muscle Fiber Development](#), [Toll-Like Receptors Cascades](#), [Feeding Behaviour](#)

Application Details

Application Notes: ELISA: 1:10000, WB: 1:500 - 1:2000, FCM: 1:200 - 1:400

Restrictions: For Research Use only

Handling

Format: Liquid

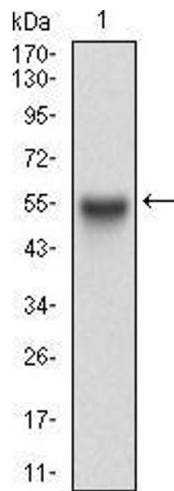
Buffer: Purified antibody in PBS with 0.05 % sodium azide.

Preservative: Sodium azide

Precaution of Use: This product contains Sodium azide: a POISONOUS AND HAZARDOUS SUBSTANCE which should be handled by trained staff only.

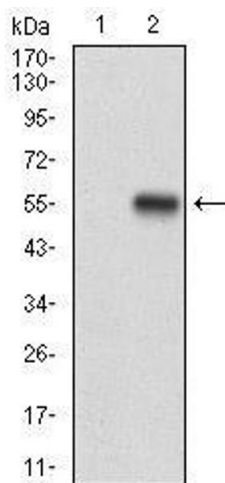
Storage: 4 °C/-20 °C

Storage Comment: 4°C, -20°C for long term storage



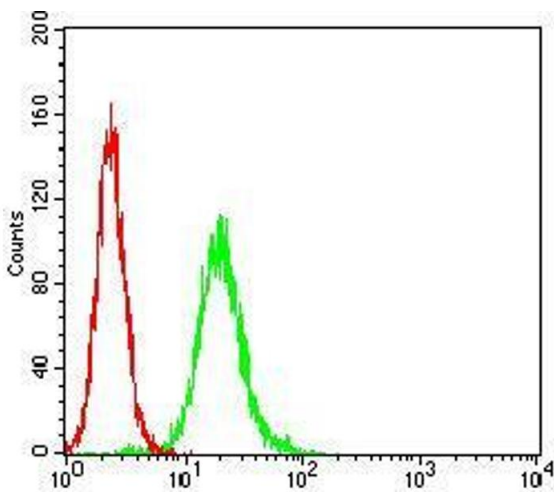
Western Blotting

Image 1. Western blot analysis using APP mAb against human APP (AA: 483-699) recombinant protein. (Expected MW is 50.7 kDa)



Western Blotting

Image 2. Western blot analysis using APP mAb against HEK293 (1) and APP (AA: 483-699)-hlgGFc transfected HEK293 (2) cell lysate.



Flow Cytometry

Image 3. Flow cytometric analysis of HeLa cells using APP mouse mAb (green) and negative control (red).

Please check the [product details page](#) for more images. Overall 4 images are available for ABIN5542446.