

Datasheet for ABIN5542453
anti-ESRRA antibody (AA 198-376)

5 Images

[Go to Product page](#)

Overview

Quantity:	0.1 mg
Target:	ESRRA
Binding Specificity:	AA 198-376
Reactivity:	Human, Rat
Host:	Mouse
Clonality:	Monoclonal
Conjugate:	This ESRRA antibody is un-conjugated
Application:	Western Blotting (WB), Immunohistochemistry (IHC), ELISA, Flow Cytometry (FACS), Immunocytochemistry (ICC)

Product Details

Immunogen:	Purified recombinant fragment of human ESRRA (AA 198-376) expressed in E. Coli.
Clone:	6F1E6
Isotype:	IgG1

Target Details

Target:	ESRRA
Alternative Name:	ESRRA (ESRRA Products)
Background:	The protein encoded by this gene is a nuclear receptor that is closely related to the estrogen receptor. This protein acts as a site-specific transcription regulator and has been also shown to interact with estrogen and the transcription factor TFIIB by direct protein-protein contact. The

Target Details

binding and regulatory activities of this protein have been demonstrated in the regulation of a variety of genes including lactoferrin, osteopontin, medium-chain acyl coenzyme A dehydrogenase (MCAD) and thyroid hormone receptor genes. A processed pseudogene of ESRRA is located on chromosome 13q12.1. Alternatively spliced transcript variants have been found for this gene.,

Molecular Weight: 66.2kDa

HGNC: 2099

Pathways: [Nuclear Receptor Transcription Pathway](#), [Steroid Hormone Mediated Signaling Pathway](#), [Regulation of Lipid Metabolism by PPARalpha](#)

Application Details

Application Notes: ELISA: 1:10000, WB: 1:500 - 1:2000, IHC: , ICC: , FCM: 1:200 - 1:400

Restrictions: For Research Use only

Handling

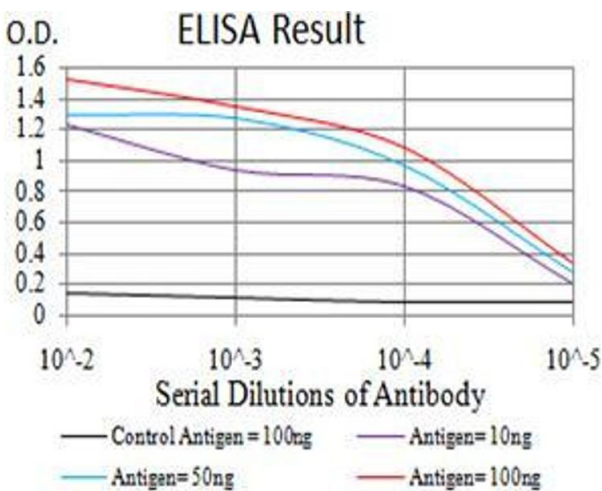
Format: Liquid

Buffer: PBS with 0.05 % sodium azide

Storage: 4 °C,-20 °C

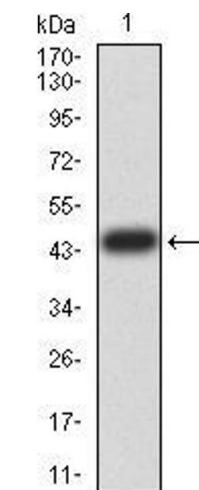
Storage Comment: 4°C, -20°C for long term storage

Images



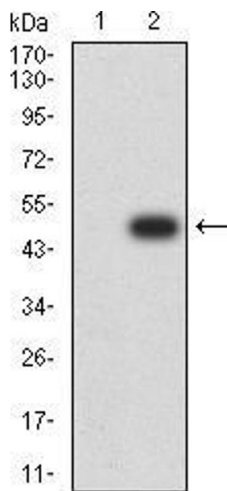
ELISA

Image 1. Black line: Control Antigen (100 ng);Purple line: Antigen (10ng); Blue line: Antigen (50 ng); Red line:Antigen (100 ng)



Western Blotting

Image 2. Western blot analysis using ESRRA mAb against human ESRRA (AA: 198-376) recombinant protein. (Expected MW is 45.3 kDa)



Western Blotting

Image 3. Western blot analysis using ESRRA mAb against HEK293 (1) and ESRRA (AA: 198-376)-hlgGFc transfected HEK293 (2) cell lysate.

Please check the [product details page](#) for more images. Overall 5 images are available for ABIN5542453.