

Datasheet for ABIN5542454  
**anti-ESRRA antibody (AA 198-376)**[Go to Product page](#)

## 4 Images

## Overview

Quantity:	0.1 mg
Target:	ESRRA
Binding Specificity:	AA 198-376
Reactivity:	Human
Host:	Mouse
Clonality:	Monoclonal
Conjugate:	This ESRRA antibody is un-conjugated
Application:	Western Blotting (WB), Immunohistochemistry (IHC), ELISA, Flow Cytometry (FACS), Immunocytochemistry (ICC)

## Product Details

Immunogen:	Purified recombinant fragment of human ESRRA (AA: 198-376) expressed in E. coli.
Clone:	1A6E11
Isotype:	IgG1
Purification:	purified

## Target Details

Target:	ESRRA
Alternative Name:	ESRRA ( <a href="#">ESRRA Products</a> )
Background:	Description: The protein encoded by this gene is a nuclear receptor that is closely related to the

## Target Details

estrogen receptor. This protein acts as a site-specific transcription regulator and has been also shown to interact with estrogen and the transcription factor TFIIIB by direct protein-protein contact. The binding and regulatory activities of this protein have been demonstrated in the regulation of a variety of genes including lactoferrin, osteopontin, medium-chain acyl coenzyme A dehydrogenase (MCAD) and thyroid hormone receptor genes. A processed pseudogene of ESRRB is located on chromosome 13q12.1. Alternatively spliced transcript variants have been found for this gene.,

Aliases: ERR1, ERRa, ESRL1, NR3B1, ERRalpha

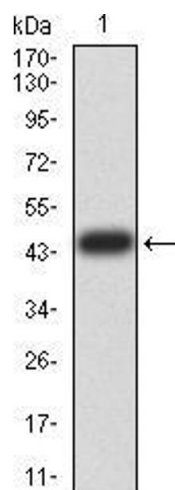
Molecular Weight:	45.5 kDa
Gene ID:	2101
HGNC:	6046
Pathways:	<a href="#">Nuclear Receptor Transcription Pathway</a> , <a href="#">Steroid Hormone Mediated Signaling Pathway</a> , <a href="#">Regulation of Lipid Metabolism by PPARalpha</a>

## Application Details

Application Notes:	ELISA: 1:10000, WB: 1:500 - 1:2000, IHC: , ICC: , FCM: 1:200 - 1:400
Restrictions:	For Research Use only

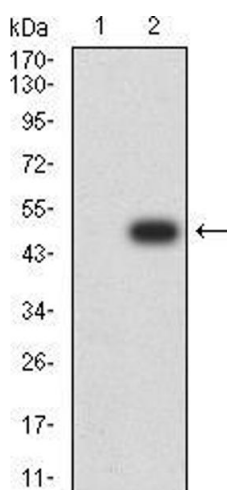
## Handling

Format:	Liquid
Buffer:	Purified antibody in PBS with 0.05 % sodium azide
Preservative:	Sodium azide
Precaution of Use:	This product contains Sodium azide: a POISONOUS AND HAZARDOUS SUBSTANCE which should be handled by trained staff only.
Storage:	4 °C/-20 °C
Storage Comment:	4°C, -20°C for long term storage



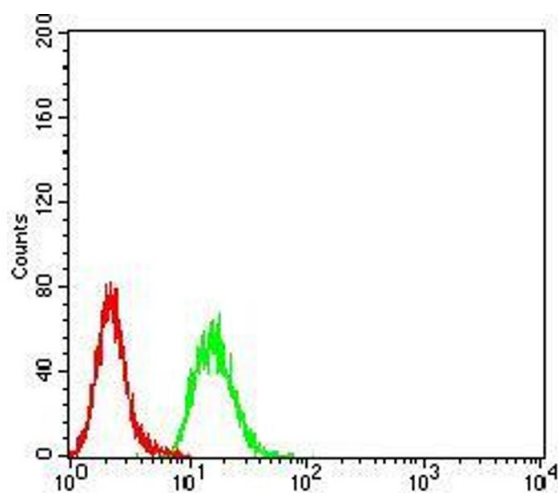
#### Western Blotting

**Image 1.** Western blot analysis using ESRRA mAb against human ESRRA (AA: 198-376) recombinant protein. (Expected MW is 45.3 kDa)



#### Western Blotting

**Image 2.** Western blot analysis using ESRRA mAb against HEK293 (1) and ESRRA (AA: 198-376)-hlgGfC transfected HEK293 (2) cell lysate.



#### Flow Cytometry

**Image 3.** Flow cytometric analysis of HeLa cells using ESRRA mouse mAb (green) and negative control (red).

Please check the [product details page](#) for more images. Overall 4 images are available for ABIN5542454.