



[Go to Product page](#)

Datasheet for ABIN5542459

anti-Cytokeratin 5 antibody (AA 258-357)

7 Images

Overview

Quantity:	0.1 mg
Target:	Cytokeratin 5 (KRT5)
Binding Specificity:	AA 258-357
Reactivity:	Human
Host:	Mouse
Clonality:	Monoclonal
Conjugate:	This Cytokeratin 5 antibody is un-conjugated
Application:	Western Blotting (WB), Immunohistochemistry (IHC), ELISA, Flow Cytometry (FACS), Immunocytochemistry (ICC)

Product Details

Immunogen:	Purified recombinant fragment of human CK5 (AA: 258-357) expressed in E. coli.
Clone:	2C8E4
Isotype:	IgG1
Purification:	purified

Target Details

Target:	Cytokeratin 5 (KRT5)
Alternative Name:	CK5 (KRT5 Products)
Background:	Description: The protein encoded by this gene is a member of the keratin gene family. The type

Target Details

II cytokeratins consist of basic or neutral proteins which are arranged in pairs of heterotypic keratin chains coexpressed during differentiation of simple and stratified epithelial tissues. This type II cytokeratin is specifically expressed in the basal layer of the epidermis with family member KRT14. Mutations in these genes have been associated with a complex of diseases termed epidermolysis bullosa simplex. The type II cytokeratins are clustered in a region of chromosome 12q12-q13.,

Aliases: KRT5, K5, DDD, DDD1, EBS2, KRT5A

Molecular Weight:	62.4 kDa
-------------------	----------

Gene ID:	3852
----------	------

HGNC:	3852
-------	------

Application Details

Application Notes:	ELISA: 1:10000, WB: 1:500 - 1:2000, IHC: 1:200 - 1:1000, ICC: 1:200 - 1:1000, FCM: 1:200 - 1:400
--------------------	--

Restrictions:	For Research Use only
---------------	-----------------------

Handling

Format:	Liquid
---------	--------

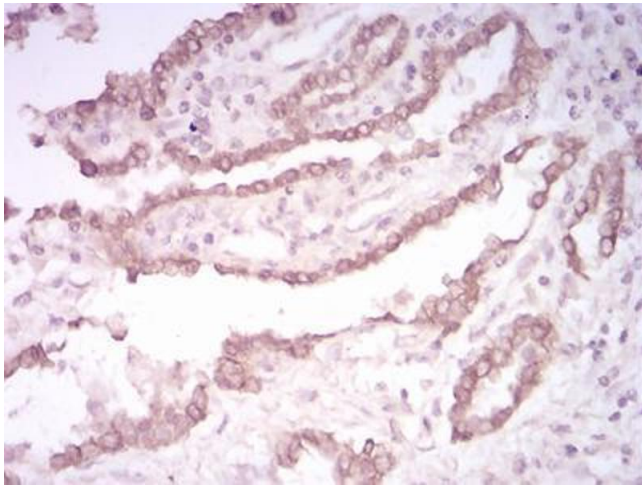
Buffer:	Purified antibody in PBS with 0.05 % sodium azide
---------	---

Preservative:	Sodium azide
---------------	--------------

Precaution of Use:	This product contains Sodium azide: a POISONOUS AND HAZARDOUS SUBSTANCE which should be handled by trained staff only.
--------------------	--

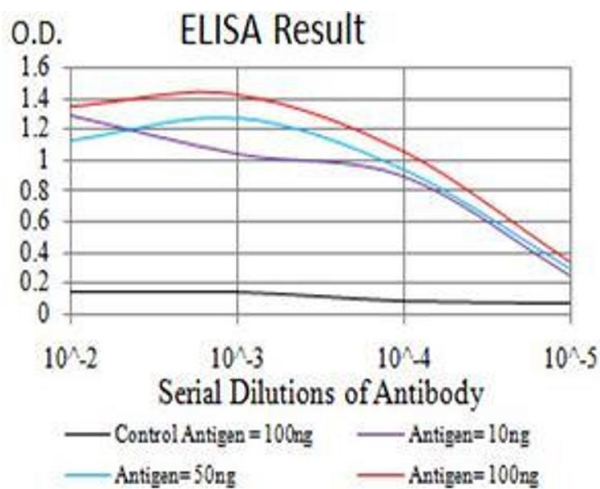
Storage:	4 °C/-20 °C
----------	-------------

Storage Comment:	4°C, -20°C for long term storage
------------------	----------------------------------



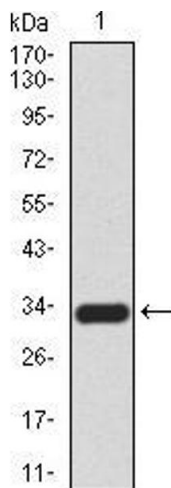
Immunohistochemistry

Image 1. Immunohistochemical analysis of paraffin-embedded lung cancer tissues using CK5 mouse mAb with DAB staining.



ELISA

Image 2. Black line: Control Antigen (100 ng), Purple line: Antigen(10 ng), Blue line: Antigen (50 ng), Red line: Antigen (100 ng),



Western Blotting

Image 3. Western blot analysis using CK5 mAb against human CK5 (AA: 258-357) recombinant protein. (Expected MW is 33.1 kDa)

Please check the [product details page](#) for more images. Overall 7 images are available for ABIN5542459.