

Datasheet for ABIN5542468  
**anti-SOD2 antibody (AA 1-222)**



[Go to Product page](#)

7 Images

## Overview

Quantity:	100 µL
Target:	SOD2
Binding Specificity:	AA 1-222
Reactivity:	Human
Host:	Mouse
Clonality:	Monoclonal
Conjugate:	This SOD2 antibody is un-conjugated
Application:	Western Blotting (WB), Immunohistochemistry (IHC), ELISA, Flow Cytometry (FACS)

## Product Details

Purpose:	SOD2 Antibody
Immunogen:	Purified recombinant fragment of human SOD2 (AA: 1-222) expressed in E. Coli.
Clone:	8H3F9
Isotype:	IgG1
Purification:	Purified antibody

## Target Details

Target:	SOD2
Alternative Name:	SOD2 ( <a href="#">SOD2 Products</a> )
Background:	Description: This gene is a member of the iron/manganese superoxide dismutase family. It

## Target Details

encodes a mitochondrial protein that forms a homotetramer and binds one manganese ion per subunit. This protein binds to the superoxide byproducts of oxidative phosphorylation and converts them to hydrogen peroxide and diatomic oxygen. Mutations in this gene have been associated with idiopathic cardiomyopathy (IDC), premature aging, sporadic motor neuron disease, and cancer. Alternative splicing of this gene results in multiple transcript variants. A related pseudogene has been identified on chromosome 1.

Aliases: IPOB, IPO-B, MNSOD, MVCD6, Mn-SOD

Molecular Weight: 24.7kDa

Gene ID: 6648

HGNC: 9510

UniProt: [P04179](#)

Pathways: [Sensory Perception of Sound](#), [Transition Metal Ion Homeostasis](#), [Negative Regulation of intrinsic apoptotic Signaling](#)

## Application Details

Application Notes: ELISA: 1/10000  
FCM: 1/200 - 1/400

Restrictions: For Research Use only

## Handling

Format: Liquid

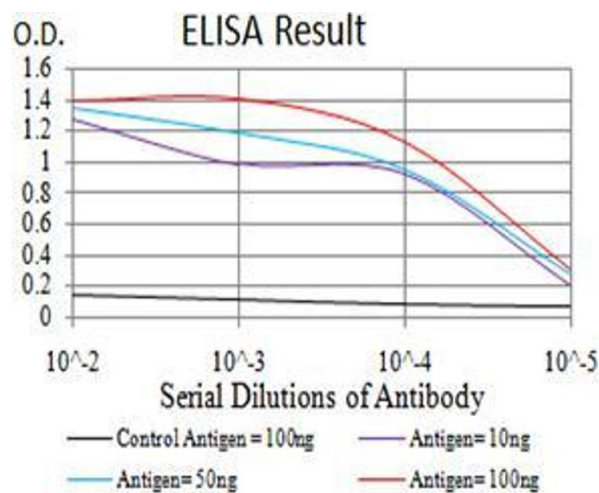
Buffer: Purified antibody in PBS with 0.05 % sodium azide.

Preservative: Sodium azide

Precaution of Use: This product contains Sodium azide: a POISONOUS AND HAZARDOUS SUBSTANCE which should be handled by trained staff only.

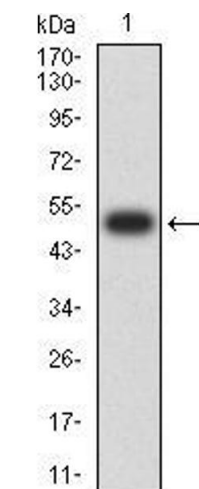
Storage: 4 °C,-20 °C

Storage Comment: Store at 4°C short term. Aliquot and store at -20°C long term. Avoid freeze/thaw cycles.



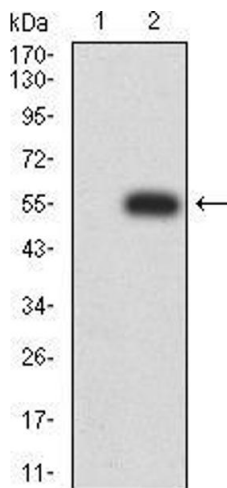
#### ELISA

**Image 1.** Black line: Control Antigen (100 ng);Purple line: Antigen (10ng); Blue line: Antigen (50 ng); Red line:Antigen (100 ng)



#### Western Blotting

**Image 2.** Western blot analysis using SOD2 mAb against human SOD2 (AA: 1-222) recombinant protein. (Expected MW is 50.7 kDa)



#### Western Blotting

**Image 3.** Western blot analysis using SOD2 mAb against HEK293 (1) and SOD2 (AA: 1-222)-hlgGfC transfected HEK293 (2) cell lysate.

Please check the [product details page](#) for more images. Overall 7 images are available for ABIN5542468.