

Datasheet for ABIN5542470
anti-Keratin 10 antibody (AA 345-454)[Go to Product page](#)

7 Images

Overview

Quantity:	0.1 mg
Target:	Keratin 10 (KRT10)
Binding Specificity:	AA 345-454
Reactivity:	Human, Mouse, Rat, Monkey
Host:	Mouse
Clonality:	Monoclonal
Conjugate:	This Keratin 10 antibody is un-conjugated
Application:	Flow Cytometry (FACS), Immunohistochemistry (IHC), Western Blotting (WB), ELISA, Immunocytochemistry (ICC)

Product Details

Immunogen:	Purified recombinant fragment of human KRT10 (AA: 345-454) expressed in E. coli.
Clone:	3C2F5
Isotype:	IgG1
Purification:	purified

Target Details

Target:	Keratin 10 (KRT10)
Alternative Name:	KRT10 (KRT10 Products)
Background:	Description: This gene encodes a member of the type I (acidic) cytokeratin family, which

Target Details

belongs to the superfamily of intermediate filament (IF) proteins. Keratins are heteropolymeric structural proteins which form the intermediate filament. These filaments, along with actin microfilaments and microtubules, compose the cytoskeleton of epithelial cells. Mutations in this gene are associated with epidermolytic hyperkeratosis. This gene is located within a cluster of keratin family members on chromosome 17q21.,

Aliases: BIE, EHK, K10, KPP, BCIE, CK10

Molecular Weight:	58.8 kDa
-------------------	----------

Gene ID:	3858
----------	------

HGNC:	3122
-------	------

Application Details

Application Notes:	ELISA: 1:10000, WB: 1:500 - 1:2000, IHC: 1:200 - 1:1000, ICC: , FCM: 1:200 - 1:400
--------------------	--

Restrictions:	For Research Use only
---------------	-----------------------

Handling

Format:	Liquid
---------	--------

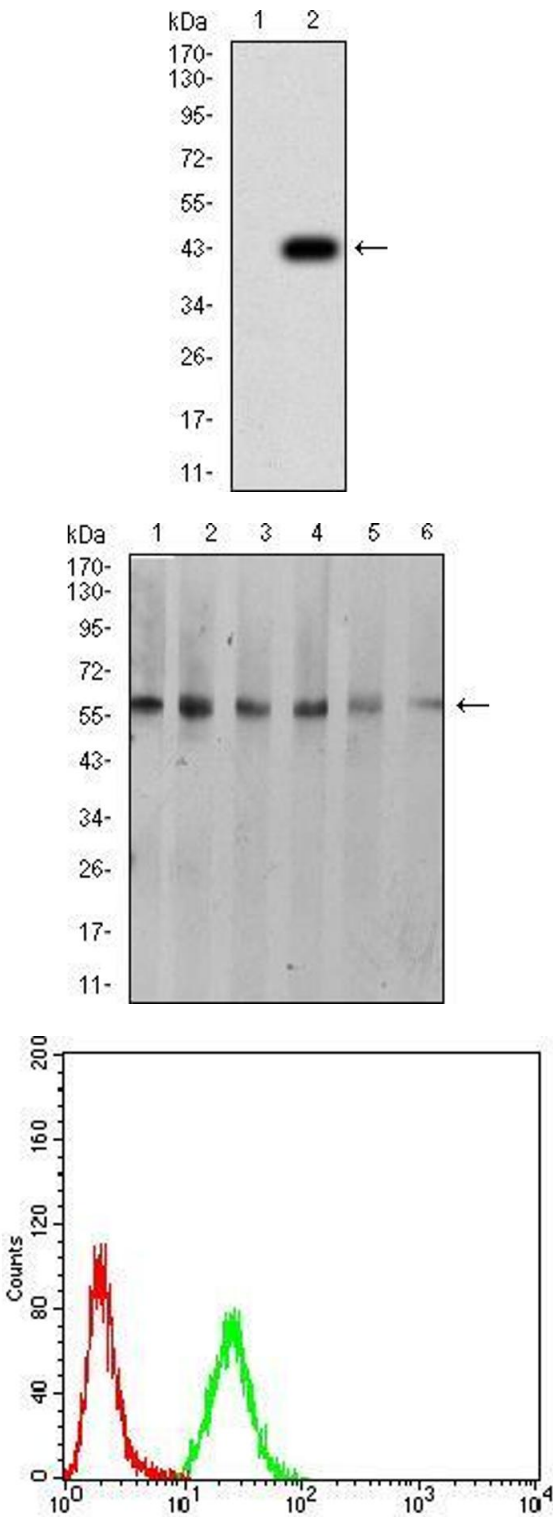
Buffer:	Purified antibody in PBS with 0.05 % sodium azide
---------	---

Preservative:	Sodium azide
---------------	--------------

Precaution of Use:	This product contains Sodium azide: a POISONOUS AND HAZARDOUS SUBSTANCE which should be handled by trained staff only.
--------------------	--

Storage:	4 °C/-20 °C
----------	-------------

Storage Comment:	4°C, -20°C for long term storage
------------------	----------------------------------



Western Blotting

Image 1. Western blot analysis using KRT10 mAb against HEK293 (1) and KRT10 (AA: 345-454)-hlgGFc transfected HEK293 (2) cell lysate.

Western Blotting

Image 2. Western blot analysis using KRT10 mouse mAb against A431 (1), C6 (2), COS7 (3), Jurkat (4), NIH/3T3 (5), and HEK293 (6) cell lysate.

Flow Cytometry

Image 3. Flow cytometric analysis of Hela cells using KRT10 mouse mAb (green) and negative control (red).

Please check the [product details page](#) for more images. Overall 7 images are available for ABIN5542470.