



[Go to Product page](#)

Datasheet for ABIN5542475  
**anti-MECP2 antibody (AA 7-148)**

8 Images

### Overview

Quantity:	0.1 mg
Target:	MECP2
Binding Specificity:	AA 7-148
Reactivity:	Human
Host:	Mouse
Clonality:	Monoclonal
Conjugate:	This MECP2 antibody is un-conjugated
Application:	Western Blotting (WB), ELISA, Immunohistochemistry (IHC), Flow Cytometry (FACS), Immunocytochemistry (ICC)

### Product Details

Immunogen:	Purified recombinant fragment of human MECP2 (AA: 7-148) expressed in E. coli.
Clone:	8H4A5B9
Isotype:	IgG1
Purification:	purified

### Target Details

Target:	MECP2
Alternative Name:	MECP2 ( <a href="#">MECP2 Products</a> )
Background:	Description: DNA methylation is the major modification of eukaryotic genomes and plays an

## Target Details

---

essential role in mammalian development. Human proteins MECP2, MBD1, MBD2, MBD3, and MBD4 comprise a family of nuclear proteins related by the presence in each of a methyl-CpG binding domain (MBD). Each of these proteins, with the exception of MBD3, is capable of binding specifically to methylated DNA. MECP2, MBD1 and MBD2 can also repress transcription from methylated gene promoters. In contrast to other MBD family members, MECP2 is X-linked and subject to X inactivation. MECP2 is dispensible in stem cells, but is essential for embryonic development. MECP2 gene mutations are the cause of most cases of Rett syndrome, a progressive neurologic developmental disorder and one of the most common causes of mental retardation in females.,

Aliases: RS, RTS, RTT, PPMX, MRX16, MRX79, MRXSL, AUTSX3, MRXS13

---

Molecular Weight: 52.4 kDa

---

Gene ID: 4204

---

HGNC: 4204

---

Pathways: [Inositol Metabolic Process](#), [Chromatin Binding](#), [Synaptic Membrane](#)

## Application Details

---

Application Notes: ELISA: 1:10000, WB: 1:500 - 1:2000, IHC: 1:200 - 1:1000, ICC: 1:200 - 1:1000, FCM: 1:200 - 1:400

---

Restrictions: For Research Use only

## Handling

---

Format: Liquid

---

Buffer: Purified antibody in PBS with 0.05 % sodium azide

---

Preservative: Sodium azide

---

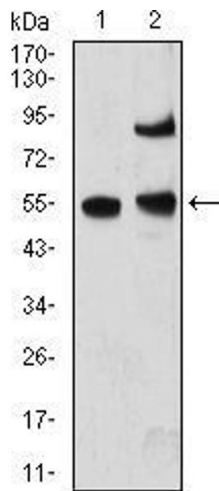
Precaution of Use: This product contains Sodium azide: a POISONOUS AND HAZARDOUS SUBSTANCE which should be handled by trained staff only.

---

Storage: 4 °C/-20 °C

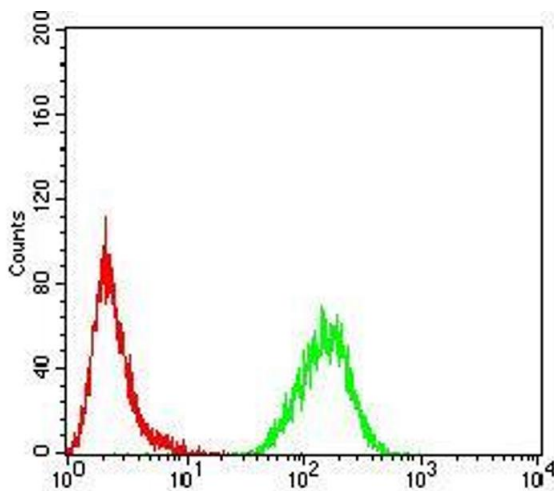
---

Storage Comment: 4°C, -20°C for long term storage



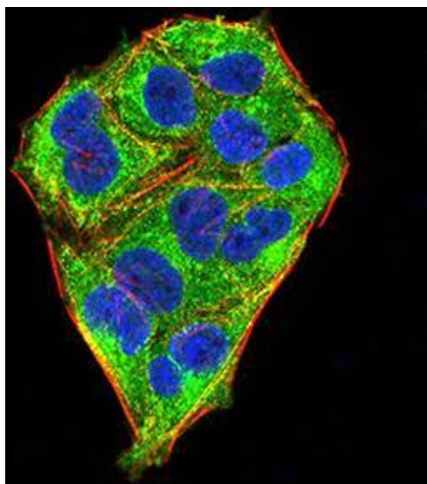
### Western Blotting

**Image 1.** Western blot analysis using MECP2 mouse mAb against A431 (1) and MCF-7 (2) cell lysate.



### Flow Cytometry

**Image 2.** Flow cytometric analysis of HeLa cells using MECP2 mouse mAb (green) and negative control (red).



### Immunofluorescence

**Image 3.** Immunofluorescence analysis of HeLa cells using MECP2 mouse mAb (green). Blue: DRAQ5 fluorescent DNA dye. Red: Actin filaments have been labeled with Alexa Fluor-555 phalloidin. Secondary antibody from Fisher (Cat#: 35503)

Please check the [product details page](#) for more images. Overall 8 images are available for ABIN5542475.