



[Go to Product page](#)

Datasheet for ABIN5542477  
**anti-CBX1 antibody (AA 1-185)**

8 Images

### Overview

Quantity:	0.1 mg
Target:	CBX1
Binding Specificity:	AA 1-185
Reactivity:	Human
Host:	Mouse
Clonality:	Monoclonal
Conjugate:	This CBX1 antibody is un-conjugated
Application:	Western Blotting (WB), ELISA, Immunohistochemistry (IHC), Flow Cytometry (FACS), Immunocytochemistry (ICC)

### Product Details

Immunogen:	Purified recombinant fragment of human CBX1 (AA: 1-185) expressed in E. coli.
Clone:	4D7B8
Isotype:	IgG1
Purification:	purified

### Target Details

Target:	CBX1
Alternative Name:	CBX1 ( <a href="#">CBX1 Products</a> )
Background:	Description: This gene encodes a highly conserved nonhistone protein, which is a member of

## Target Details

---

the heterochromatin protein family . The protein is enriched in the heterochromatin and associated with centromeres. The protein has a single N-terminal chromodomain which can bind to histone proteins via methylated lysine residues, and a C-terminal chromo shadow-domain (CSD) which is responsible for the homodimerization and interaction with a number of chromatin-associated nonhistone proteins. The protein may play an important role in the epigenetic control of chromatin structure and gene expression. Several related pseudogenes are located on chromosomes 1, 3, and X. Multiple alternatively spliced variants, encoding the same protein, have been identified. ,

Aliases: CBX, M31, MOD1, p25beta, HP1-BETA, HP1Hsbeta, HP1Hs-beta

---

Molecular Weight: 21.4 kDa

---

Gene ID: 10951

---

HGNC: 10951

## Application Details

---

Application Notes: ELISA: 1:10000, WB: 1:500 - 1:2000, IHC: 1:200 - 1:1000, ICC: 1:200 - 1:1000, FCM: 1:200 - 1:400

---

Restrictions: For Research Use only

## Handling

---

Format: Liquid

---

Buffer: Purified antibody in PBS with 0.05 % sodium azide

---

Preservative: Sodium azide

---

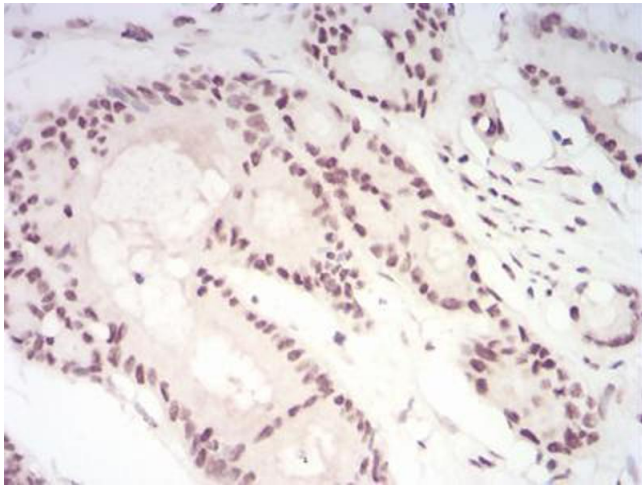
Precaution of Use: This product contains Sodium azide: a POISONOUS AND HAZARDOUS SUBSTANCE which should be handled by trained staff only.

---

Storage: 4 °C/-20 °C

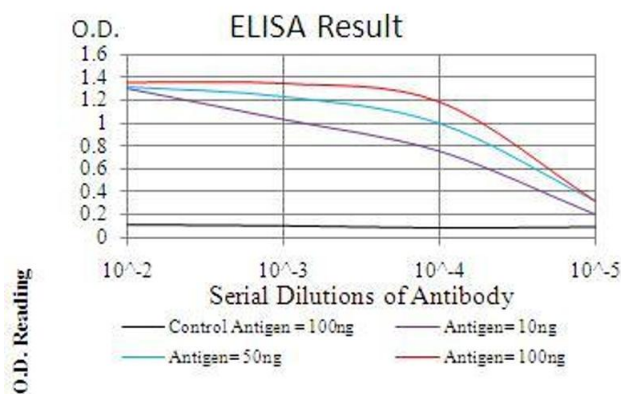
---

Storage Comment: 4°C, -20°C for long term storage



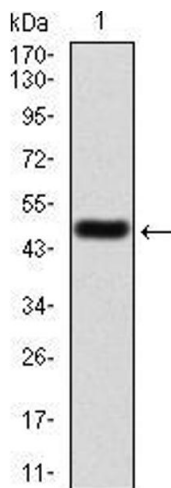
### Immunohistochemistry

**Image 1.** Immunohistochemical analysis of paraffin-embedded colon cancer tissues using CBX1 mouse mAb with DAB staining.



### ELISA

**Image 2.** Black line: Control Antigen (100 ng), Purple line: Antigen(10 ng), Blue line: Antigen (50 ng), Red line: Antigen (100 ng),



### Western Blotting

**Image 3.** Western blot analysis using CBX1 mAb against human CBX1 (AA: 1-185) recombinant protein. (Expected MW is 47.3 kDa)

Please check the [product details page](#) for more images. Overall 8 images are available for ABIN5542477.