

Datasheet for ABIN5542482
anti-ARF1 antibody (AA 76-182)[Go to Product page](#)

4 Images

Overview

Quantity:	0.1 mg
Target:	ARF1
Binding Specificity:	AA 76-182
Reactivity:	Human
Host:	Mouse
Clonality:	Monoclonal
Conjugate:	This ARF1 antibody is un-conjugated
Application:	Western Blotting (WB), ELISA, Immunohistochemistry (IHC), Immunocytochemistry (ICC), Flow Cytometry (FACS)

Product Details

Immunogen:	Purified recombinant fragment of human ARF1 (AA: 76-182) expressed in E. coli.
Clone:	6A10A5
Isotype:	IgG1
Purification:	purified

Target Details

Target:	ARF1
Alternative Name:	ARF1 (ARF1 Products)
Background:	ADP-ribosylation factor 1 (ARF1) is a member of the human ARF gene family. The family

Target Details

members encode small guanine nucleotide-binding proteins that stimulate the ADP-ribosyltransferase activity of cholera toxin and play a role in vesicular trafficking as activators of phospholipase D. The gene products, including 6 ARF proteins and 11 ARF-like proteins, constitute a family of the RAS superfamily. The ARF proteins are categorized as class I (ARF1, ARF2 and ARF3), class II (ARF4 and ARF5) and class III (ARF6), and members of each class share a common gene organization. The ARF1 protein is localized to the Golgi apparatus and has a central role in intra-Golgi transport. Multiple alternatively spliced transcript variants encoding the same protein have been found for this gene.,

Molecular Weight: 20.7 kDa

Gene ID: 375

HGNC: 375

Pathways: [Transition Metal Ion Homeostasis](#), [Inositol Metabolic Process](#)

Application Details

Application Notes: ELISA: 1:10000, WB: 1:500 - 1:2000, IHC: , ICC: , FCM: 1:200 - 1:400

Restrictions: For Research Use only

Handling

Format: Liquid

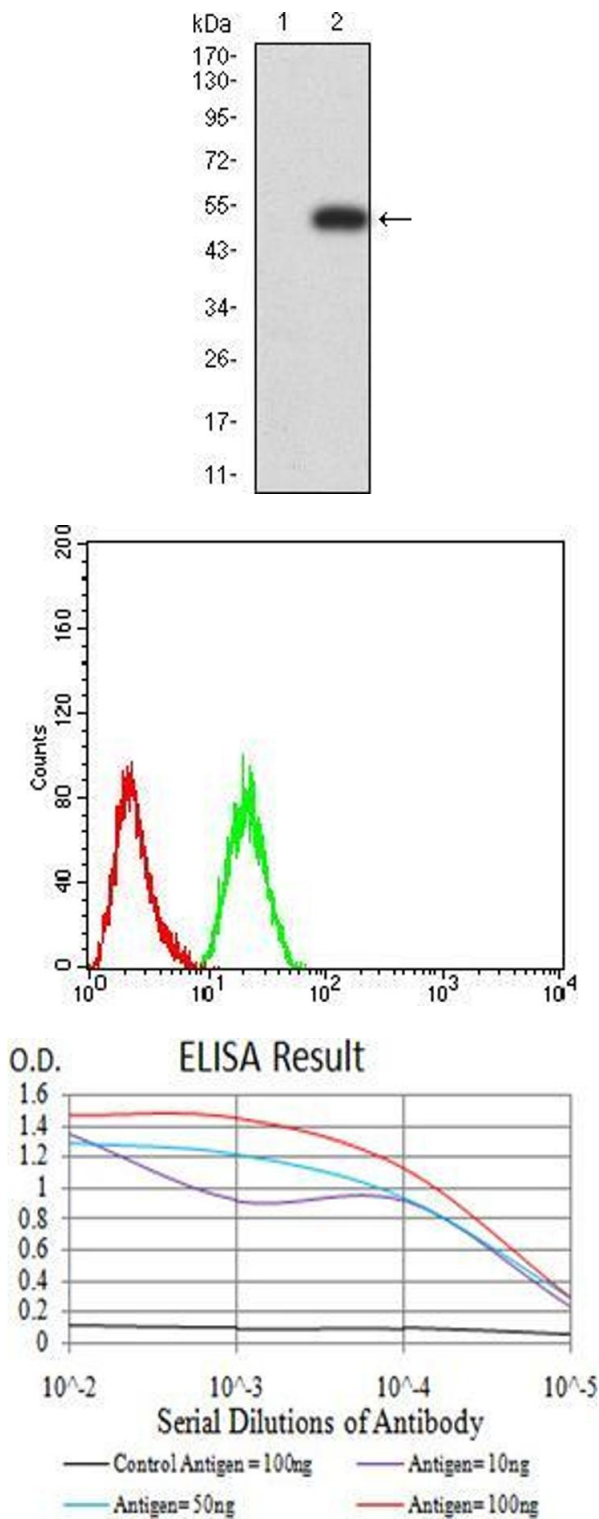
Buffer: Purified antibody in PBS with 0.05 % sodium azide

Preservative: Sodium azide

Precaution of Use: This product contains Sodium azide: a POISONOUS AND HAZARDOUS SUBSTANCE which should be handled by trained staff only.

Storage: 4 °C/-20 °C

Storage Comment: 4°C, -20°C for long term storage



Western Blotting

Image 1. Western blot analysis using ARF1 mAb against HEK293 (1) and ARF1 (AA: 1-182)-hlgGFc transfected HEK293 (2) cell lysate.

Flow Cytometry

Image 2. Flow cytometric analysis of Hela cells using ARF1 mouse mAb (green) and negative control (red).

ELISA

Image 3. Black line: Control Antigen (100 ng);Purple line: Antigen (10ng); Blue line: Antigen (50 ng); Red line:Antigen (100 ng)

Please check the [product details page](#) for more images. Overall 4 images are available for ABIN5542482.