

Datasheet for ABIN5542485  
**anti-PD-L1 antibody (AA 24-153)**

## 4 Images

[Go to Product page](#)

## Overview

Quantity:	0.1 mg
Target:	PD-L1
Binding Specificity:	AA 24-153
Reactivity:	Human
Host:	Mouse
Clonality:	Monoclonal
Conjugate:	This PD-L1 antibody is un-conjugated
Application:	Western Blotting (WB), Flow Cytometry (FACS), Immunohistochemistry (IHC), ELISA, Immunocytochemistry (ICC)

## Product Details

Immunogen:	Purified recombinant fragment of human CD274 (AA: 24-153) expressed in E. coli.
Clone:	7D2A10
Isotype:	IgG2b
Purification:	purified

## Target Details

Target:	PD-L1
Alternative Name:	CD274 ( <a href="#">PD-L1 Products</a> )
Background:	Description: This gene encodes an immune inhibitory receptor ligand that is expressed by

## Target Details

hematopoietic and non-hematopoietic cells, such as T cells and B cells and various types of tumor cells. The encoded protein is a type I transmembrane protein that has immunoglobulin V-like and C-like domains. Interaction of this ligand with its receptor inhibits T-cell activation and cytokine production. During infection or inflammation of normal tissue, this interaction is important for preventing autoimmunity by maintaining homeostasis of the immune response. In tumor microenvironments, this interaction provides an immune escape for tumor cells through cytotoxic T-cell inactivation. Expression of this gene in tumor cells is considered to be prognostic in many types of human malignancies, including colon cancer and renal cell carcinoma. Alternative splicing results in multiple transcript variants.,  
Aliases: B7-H, B7H1, PDL1, PD-L1, PDCD1L1, PDCD1LG1

Molecular Weight:	33.3 kDa
-------------------	----------

Gene ID:	29126
----------	-------

HGNC:	29126
-------	-------

Pathways:	<a href="#">Cancer Immune Checkpoints</a>
-----------	-------------------------------------------

## Application Details

Application Notes:	ELISA: 1:10000, WB: 1:500 - 1:2000, IHC: , ICC: , FCM: 1:200 - 1:400
--------------------	----------------------------------------------------------------------

Restrictions:	For Research Use only
---------------	-----------------------

## Handling

Format:	Liquid
---------	--------

Buffer:	Purified antibody in PBS with 0.05 % sodium azide
---------	---------------------------------------------------

Preservative:	Sodium azide
---------------	--------------

Precaution of Use:	This product contains Sodium azide: a POISONOUS AND HAZARDOUS SUBSTANCE which should be handled by trained staff only.
--------------------	------------------------------------------------------------------------------------------------------------------------

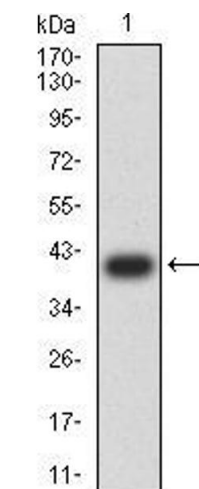
Storage:	4 °C/-20 °C
----------	-------------

Storage Comment:	4°C, -20°C for long term storage
------------------	----------------------------------



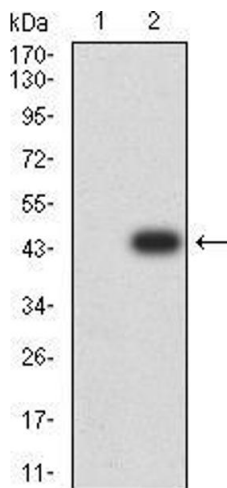
### ELISA

**Image 1.** Black line: Control Antigen (100 ng);Purple line: Antigen (10ng); Blue line: Antigen (50 ng); Red line:Antigen (100 ng)



### Western Blotting

**Image 2.** Western blot analysis using CD274 mAb against human CD274 (AA: 24-153) recombinant protein. (Expected MW is 40.1 kDa)



### Western Blotting

**Image 3.** Western blot analysis using \*\*\* mAb against HEK293 (1) and \*\*\* (AA: \*\*\*)-hIgGFc transfected HEK293 (2) cell lysate.

Please check the [product details page](#) for more images. Overall 4 images are available for ABIN5542485.