

Datasheet for ABIN5542486
anti-BAD antibody (AA 1-168)[Go to Product page](#)

5 Images

Overview

Quantity:	0.1 mg
Target:	BAD
Binding Specificity:	AA 1-168
Reactivity:	Human
Host:	Mouse
Clonality:	Monoclonal
Conjugate:	This BAD antibody is un-conjugated
Application:	ELISA, Western Blotting (WB), Flow Cytometry (FACS)

Product Details

Immunogen:	Purified recombinant fragment of human BAD (AA: FULL(1-168)) expressed in E. coli.
Clone:	1G5B3
Isotype:	IgG1
Purification:	purified

Target Details

Target:	BAD
Alternative Name:	BAD (BAD Products)
Background:	Description: The protein encoded by this gene is a member of the BCL-2 family. BCL-2 family members are known to be regulators of programmed cell death. This protein positively

Target Details

regulates cell apoptosis by forming heterodimers with BCL-xL and BCL-2, and reversing their death repressor activity. Proapoptotic activity of this protein is regulated through its phosphorylation. Protein kinases AKT and MAP kinase, as well as protein phosphatase calcineurin were found to be involved in the regulation of this protein. Alternative splicing of this gene results in two transcript variants which encode the same isoform.

Aliases: BBC2, BCL2L8

Molecular Weight: 18.4 kDa

Gene ID: 572

HGNC: 572

Pathways: [MAPK Signaling](#), [PI3K-Akt Signaling](#), [RTK Signaling](#), [Apoptosis](#), [Fc-epsilon Receptor Signaling Pathway](#), [Positive Regulation of Peptide Hormone Secretion](#), [Carbohydrate Homeostasis](#), [Positive Regulation of Endopeptidase Activity](#), [Regulation of Carbohydrate Metabolic Process](#), [Hepatitis C](#), [CXCR4-mediated Signaling Events](#)

Application Details

Application Notes: ELISA: 1:10000, WB: 1:500 - 1:2000, FCM: 1:200 - 1:400

Restrictions: For Research Use only

Handling

Format: Liquid

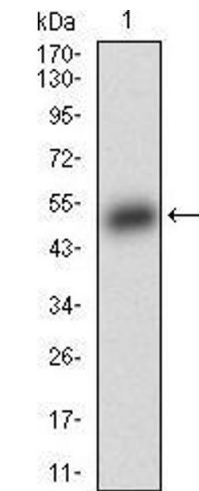
Buffer: Purified antibody in PBS with 0.05 % sodium azide.

Preservative: Sodium azide

Precaution of Use: This product contains Sodium azide: a POISONOUS AND HAZARDOUS SUBSTANCE which should be handled by trained staff only.

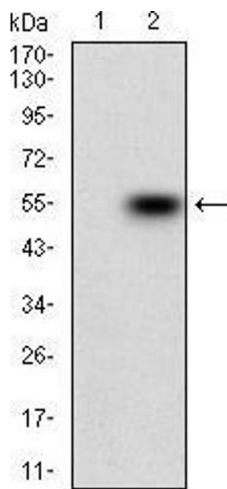
Storage: 4 °C/-20 °C

Storage Comment: 4°C, -20°C for long term storage



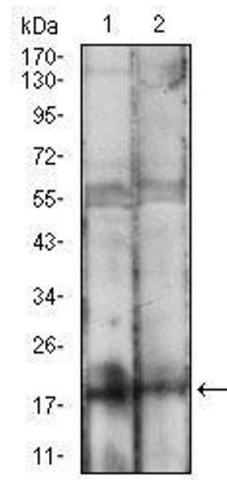
Western Blotting

Image 1. Western blot analysis using BAD mAb against human BAD (AA: FULL(1-168)) recombinant protein. (Expected MW is 44.3 kDa)



Western Blotting

Image 2. Western blot analysis using BAD mAb against HEK293 (1) and BAD (AA: FULL(1-168))-hlgGFc transfected HEK293 (2) cell lysate.



Western Blotting

Image 3. Western blot analysis using BAD mouse mAb against MCF-7 (1), HEK293 (2) cell lysate.

Please check the [product details page](#) for more images. Overall 5 images are available for ABIN5542486.