

Datasheet for ABIN5542503
anti-UBE2C antibody (AA 1-179)

6 Images

[Go to Product page](#)

Overview

Quantity:	0.1 mg
Target:	UBE2C
Binding Specificity:	AA 1-179
Reactivity:	Human
Host:	Mouse
Clonality:	Monoclonal
Conjugate:	This UBE2C antibody is un-conjugated
Application:	Western Blotting (WB), ELISA, Immunohistochemistry (IHC)

Product Details

Immunogen:	Purified recombinant fragment of human UBE2C (AA: FULL(1-179)) expressed in E. coli.
Clone:	1F5D3
Isotype:	IgG2a
Purification:	purified

Target Details

Target:	UBE2C
Alternative Name:	UBE2C (UBE2C Products)
Background:	Description: The modification of proteins with ubiquitin is an important cellular mechanism for targeting abnormal or short-lived proteins for degradation. Ubiquitination involves at least three

Target Details

classes of enzymes: ubiquitin-activating enzymes, ubiquitin-conjugating enzymes, and ubiquitin-protein ligases. This gene encodes a member of the E2 ubiquitin-conjugating enzyme family. The encoded protein is required for the destruction of mitotic cyclins and for cell cycle progression, and may be involved in cancer progression. Multiple transcript variants encoding different isoforms have been found for this gene. Pseudogenes of this gene have been defined on chromosomes 4, 14, 15, 18, and 19.

Aliases: UBCH10, dJ447F3.2

Molecular Weight:	19.7 kDa
-------------------	----------

Gene ID:	11065
----------	-------

HGNC:	11065
-------	-------

Pathways:	Ubiquitin Proteasome Pathway
-----------	--

Application Details

Application Notes:	ELISA: 1:10000, WB: 1:500 - 1:2000, IHC: 1:200 - 1:1000
--------------------	---

Restrictions:	For Research Use only
---------------	-----------------------

Handling

Format:	Liquid
---------	--------

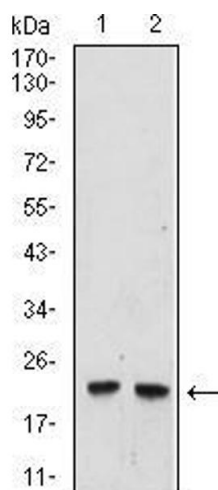
Buffer:	Purified antibody in PBS with 0.05 % sodium azide.
---------	--

Preservative:	Sodium azide
---------------	--------------

Precaution of Use:	This product contains Sodium azide: a POISONOUS AND HAZARDOUS SUBSTANCE which should be handled by trained staff only.
--------------------	--

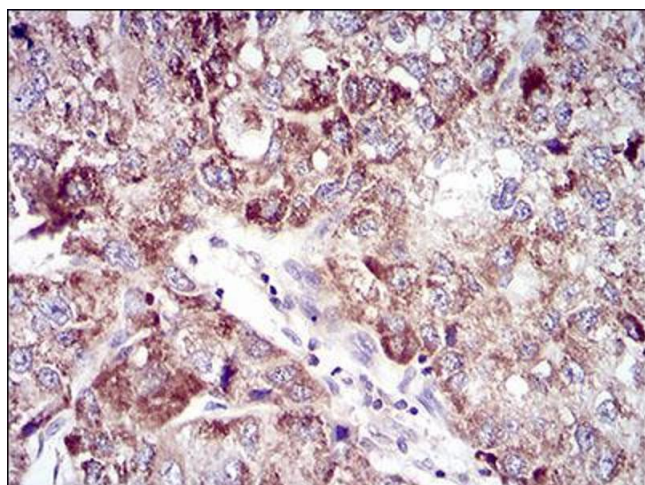
Storage:	4 °C/-20 °C
----------	-------------

Storage Comment:	4°C, -20°C for long term storage
------------------	----------------------------------



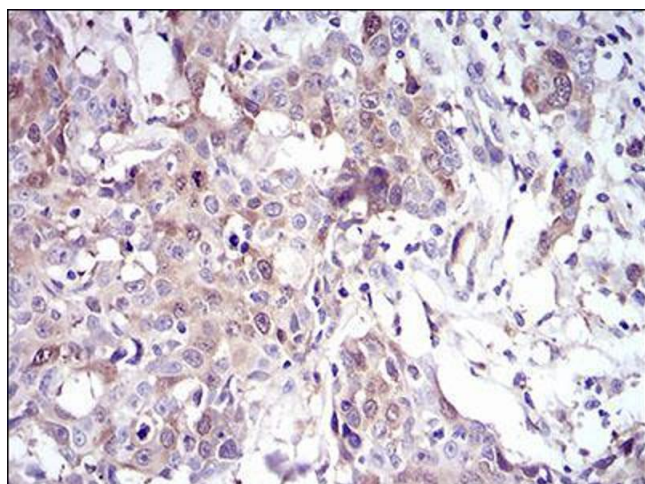
Western Blotting

Image 1. Western blot analysis using UBE2C mouse mAb against Hela (1), and Raji (2) cell lysate.



Immunohistochemistry

Image 2. Immunohistochemical analysis of paraffin-embedded liver cancer tissues using UBE2C mouse mAb with DAB staining.



Immunohistochemistry

Image 3. Immunohistochemical analysis of paraffin-embedded esophageal cancer tissues using UBE2C mouse mAb with DAB staining.

Please check the [product details page](#) for more images. Overall 6 images are available for ABIN5542503.