

Datasheet for ABIN5542511
anti-DDX58 antibody (AA 789-925)

6 Images

[Go to Product page](#)

Overview

Quantity:	0.1 mg
Target:	DDX58
Binding Specificity:	AA 789-925
Reactivity:	Human
Host:	Mouse
Clonality:	Monoclonal
Conjugate:	This DDX58 antibody is un-conjugated
Application:	Western Blotting (WB), Immunohistochemistry (IHC), ELISA, Immunocytochemistry (ICC), Flow Cytometry (FACS)

Product Details

Immunogen:	Purified recombinant fragment of human DDX58 (AA: 789-925) expressed in E. coli.
Clone:	4G1B6
Isotype:	IgM
Purification:	purified

Target Details

Target:	DDX58
Alternative Name:	DDX58 (DDX58 Products)
Background:	Description: DEAD box proteins, characterized by the conserved motif Asp-Glu-Ala-Asp (DEAD),

Target Details

are putative RNA helicases which are implicated in a number of cellular processes involving RNA binding and alteration of RNA secondary structure. This gene encodes a protein containing RNA helicase-DEAD box protein motifs and a caspase recruitment domain (CARD). It is involved in viral double-stranded (ds) RNA recognition and the regulation of immune response.,

Aliases: RIGI, RIG-I, RLR-1, SGMRT2

Molecular Weight: 106.6 kDa

Gene ID: 23586

HGNC: 23586

Pathways: [Activation of Innate immune Response](#), [Hepatitis C](#)

Application Details

Application Notes: ELISA: 1:10000, WB: 1:500 - 1:2000, IHC: , ICC: 1:200 - 1:1000, FCM: 1:200 - 1:400

Restrictions: For Research Use only

Handling

Format: Liquid

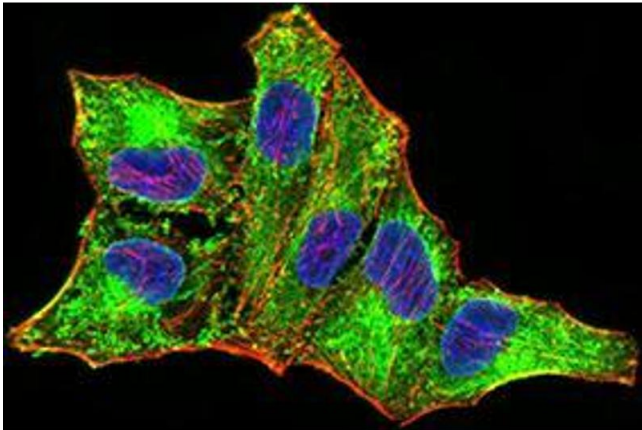
Buffer: Purified antibody in PBS with 0.05 % sodium azide

Preservative: Sodium azide

Precaution of Use: This product contains Sodium azide: a POISONOUS AND HAZARDOUS SUBSTANCE which should be handled by trained staff only.

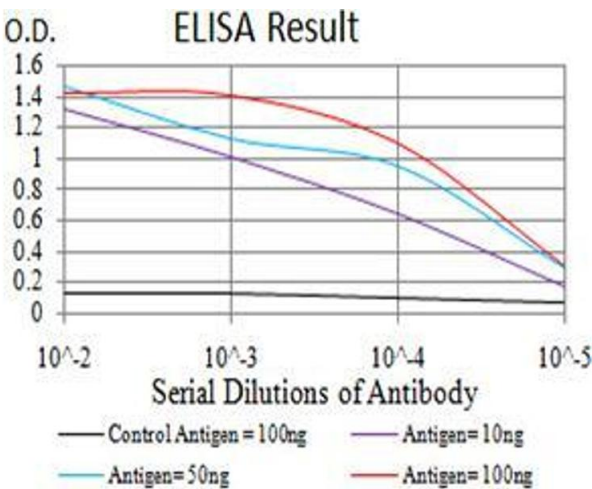
Storage: 4 °C/-20 °C

Storage Comment: 4°C, -20°C for long term storage



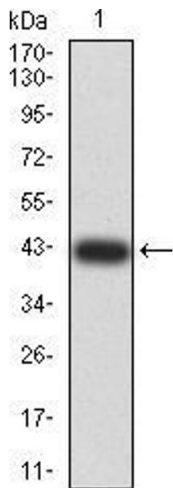
Immunocytochemistry

Image 1. Immunofluorescence analysis of MCF-7 cells using DDX58 mouse mAb (green). Blue: DRAQ5 fluorescent DNA dye. Red: Actin filaments have been labeled with Alexa Fluor-555 phalloidin. Secondary antibody from Fisher



ELISA

Image 2. Black line: Control Antigen (100 ng);Purple line: Antigen (10ng); Blue line: Antigen (50 ng); Red line:Antigen (100 ng)



Western Blotting

Image 3. Western blot analysis using DDX58 mAb against human DDX58 (AA: 789-925) recombinant protein. (Expected MW is 42 kDa)

Please check the [product details page](#) for more images. Overall 6 images are available for ABIN5542511.