

Datasheet for ABIN5542523  
**anti-KCNN2 antibody (AA 36-52)**

## 5 Images

[Go to Product page](#)

## Overview

Quantity:	0.1 mg
Target:	KCNN2
Binding Specificity:	AA 36-52
Reactivity:	Human
Host:	Mouse
Clonality:	Monoclonal
Conjugate:	This KCNN2 antibody is un-conjugated
Application:	Western Blotting (WB), Immunohistochemistry (IHC), ELISA, Immunocytochemistry (ICC), Flow Cytometry (FACS)

## Product Details

Immunogen:	Synthesized peptide of human SK2 (AA: 36-52).
Clone:	3C8D3
Isotype:	IgG1

## Target Details

Target:	KCNN2
Alternative Name:	SK2 ( <a href="#">KCNN2 Products</a> )
Background:	Description: This gene encodes one of two sphingosine kinase isozymes that catalyze the phosphorylation of sphingosine into sphingosine 1-phosphate. Sphingosine 1-phosphate mediates many cellular processes including migration, proliferation and apoptosis, and also

## Target Details

plays a role in several types of cancer by promoting angiogenesis and tumorigenesis. The encoded protein may play a role in breast cancer proliferation and chemoresistance. Alternatively spliced transcript variants encoding multiple isoforms have been observed for this gene.,  
Aliases: SPHK2, SK-2, SPK 2, SPK-2

Molecular Weight:	69.2 kDa
-------------------	----------

Gene ID:	56848
----------	-------

HGNC:	56848
-------	-------

## Application Details

Application Notes:	ELISA: 1:10000, WB: , IHC: 1:200 - 1:1000, ICC: 1:200 - 1:1000, FCM: 1:200 - 1:400
--------------------	--

Restrictions:	For Research Use only
---------------	-----------------------

## Handling

Format:	Liquid
---------	--------

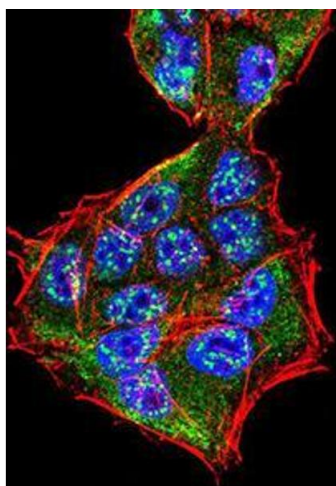
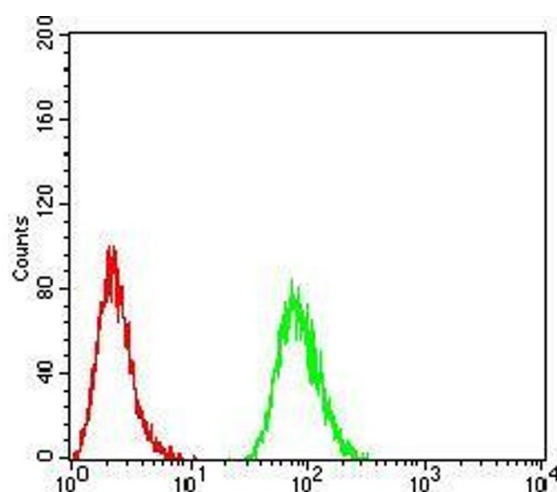
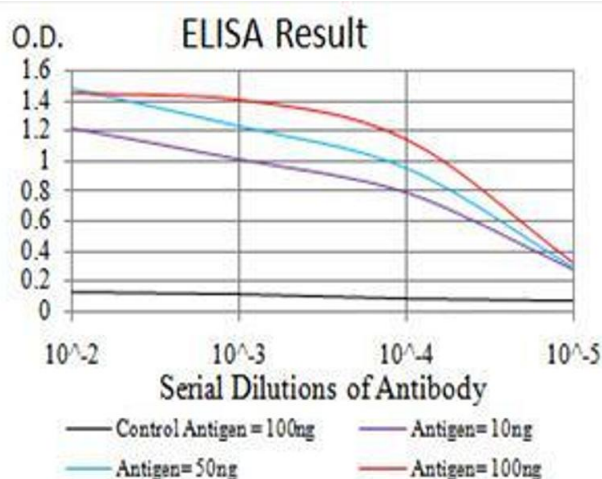
Buffer:	Purified antibody in PBS with 0.05 % sodium azide
---------	---

Preservative:	Sodium azide
---------------	--------------

Precaution of Use:	This product contains Sodium azide: a POISONOUS AND HAZARDOUS SUBSTANCE which should be handled by trained staff only.
--------------------	--

Storage:	4 °C/-20 °C
----------	-------------

Storage Comment:	4°C, -20°C for long term storage
------------------	----------------------------------



### ELISA

**Image 1.** Black line: Control Antigen (100 ng), Purple line: Antigen(10 ng), Blue line: Antigen (50 ng), Red line: Antigen (100 ng),

### Flow Cytometry

**Image 2.** Flow cytometric analysis of HeLa cells using SK2 mouse mAb (green) and negative control (red).

### Immunofluorescence

**Image 3.** Immunofluorescence analysis of HeLa cells using SK2 mouse mAb (green). Blue: DRAQ5 fluorescent DNA dye. Red: Actin filaments have been labeled with Alexa Fluor- 555 phalloidin. Secondary antibody from Fisher (Cat#: 35503)

Please check the [product details page](#) for more images. Overall 5 images are available for ABIN5542523.