



[Go to Product page](#)

Datasheet for ABIN5542525
anti-LEF1 antibody (AA 33-138)

6 Images

Overview

| | |
|----------------------|--|
| Quantity: | 0.1 mg |
| Target: | LEF1 |
| Binding Specificity: | AA 33-138 |
| Reactivity: | Human |
| Host: | Mouse |
| Clonality: | Monoclonal |
| Conjugate: | This LEF1 antibody is un-conjugated |
| Application: | Western Blotting (WB), ELISA, Immunohistochemistry (IHC), Immunocytochemistry (ICC), Flow Cytometry (FACS) |

Product Details

| | |
|---------------|--|
| Immunogen: | Purified recombinant fragment of human LEF1 (AA: 33-138) expressed in E. coli. |
| Clone: | 1A4B11 |
| Isotype: | IgG1 |
| Purification: | purified |

Target Details

| | |
|-------------------|--|
| Target: | LEF1 |
| Alternative Name: | LEF1 (LEF1 Products) |
| Background: | Description: This gene encodes a transcription factor belonging to a family of proteins that |

Target Details

share homology with the high mobility group protein-1. The protein encoded by this gene can bind to a functionally important site in the T-cell receptor-alpha enhancer, thereby conferring maximal enhancer activity. This transcription factor is involved in the Wnt signaling pathway, and it may function in hair cell differentiation and follicle morphogenesis. Mutations in this gene have been found in somatic sebaceous tumors. This gene has also been linked to other cancers, including androgen-independent prostate cancer. Alternative splicing results in multiple transcript variants.,

Aliases: LEF-1, TCF10, TCF7L3, TCF1ALPHA

Molecular Weight: 44.2 kDa

Gene ID: 51176

HGNC: 51176

Pathways: [WNT Signaling](#), [Intracellular Steroid Hormone Receptor Signaling Pathway](#), [Regulation of Hormone Metabolic Process](#), [Nuclear Hormone Receptor Binding](#), [Chromatin Binding](#)

Application Details

Application Notes: ELISA: 1:10000, WB: 1:500 - 1:2000, IHC: 1:200 - 1:1000, ICC: , FCM:

Restrictions: For Research Use only

Handling

Format: Liquid

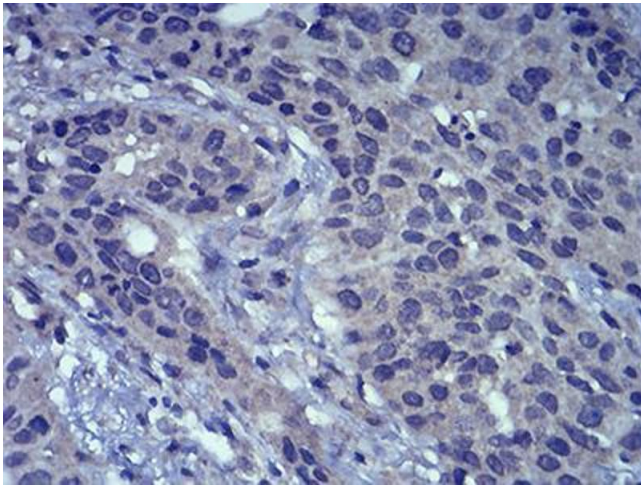
Buffer: Purified antibody in PBS with 0.05 % sodium azide

Preservative: Sodium azide

Precaution of Use: This product contains Sodium azide: a POISONOUS AND HAZARDOUS SUBSTANCE which should be handled by trained staff only.

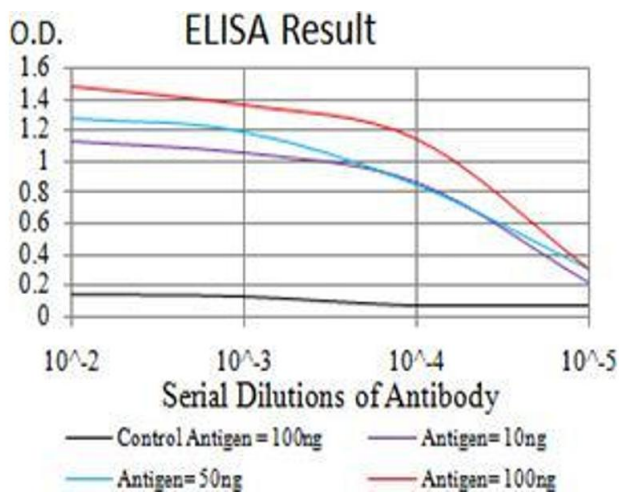
Storage: 4 °C/-20 °C

Storage Comment: 4°C, -20°C for long term storage



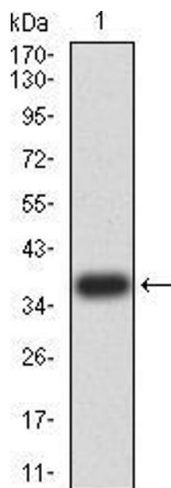
Immunohistochemistry

Image 1. Immunohistochemical analysis of paraffin-embedded esophageal cancer tissues using LEF1 mouse mAb with DAB staining.



ELISA

Image 2. Black line: Control Antigen (100 ng), Purple line: Antigen(10 ng), Blue line: Antigen (50 ng), Red line: Antigen (100 ng),



Western Blotting

Image 3. Western blot analysis using LEF1 mAb against human LEF1 (AA: 33-138) recombinant protein. (Expected MW is 37.1 kDa)

Please check the [product details page](#) for more images. Overall 6 images are available for ABIN5542525.