

Datasheet for ABIN5542529
anti-MITF antibody (AA 1-114)



[Go to Product page](#)

5 Images

Overview

Quantity:	100 µL
Target:	MITF
Binding Specificity:	AA 1-114
Reactivity:	Human
Host:	Mouse
Clonality:	Monoclonal
Conjugate:	This MITF antibody is un-conjugated
Application:	Western Blotting (WB), Flow Cytometry (FACS), ELISA

Product Details

Purpose:	MITF Antibody
Immunogen:	Purified recombinant fragment of human MITF (AA: 1-114) expressed in E. Coli.
Clone:	8F1G5
Isotype:	IgG1
Purification:	Purified antibody

Target Details

Target:	MITF
Alternative Name:	MITF (MITF Products)
Background:	Description: This gene encodes a transcription factor that contains both basic helix-loop-helix

Target Details

and leucine zipper structural features. It regulates the differentiation and development of melanocytes retinal pigment epithelium and is also responsible for pigment cell-specific transcription of the melanogenesis enzyme genes. Heterozygous mutations in the this gene cause auditory-pigmentary syndromes, such as Waardenburg syndrome type 2 and Tietz syndrome. Alternatively spliced transcript variants encoding different isoforms have been identified.

Aliases: MI, WS2, CMM8, WS2A, bHLHe32

Molecular Weight: 58.8kDa

Gene ID: 4286

HGNC: 2099

UniProt: [O75030](#)

Pathways: [Chromatin Binding](#)

Application Details

Application Notes: ELISA: 1/10000
FCM: 1/200 - 1/400

Restrictions: For Research Use only

Handling

Format: Liquid

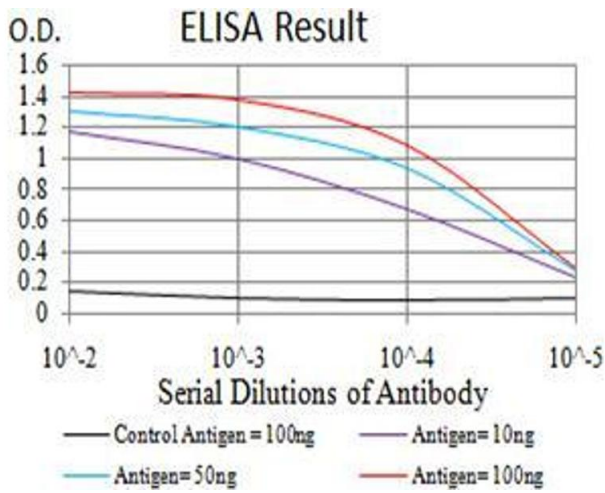
Buffer: Purified antibody in PBS with 0.05 % sodium azide.

Preservative: Sodium azide

Precaution of Use: This product contains Sodium azide: a POISONOUS AND HAZARDOUS SUBSTANCE which should be handled by trained staff only.

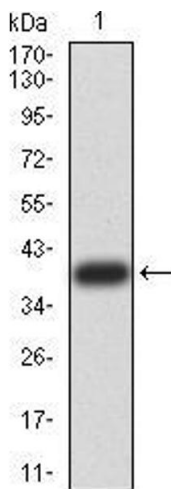
Storage: 4 °C, -20 °C

Storage Comment: Store at 4°C short term. Aliquot and store at -20°C long term. Avoid freeze/thaw cycles.



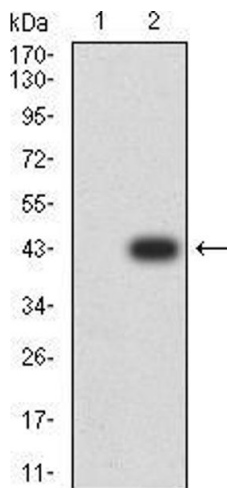
ELISA

Image 1. Black line: Control Antigen (100 ng);Purple line: Antigen (10ng); Blue line: Antigen (50 ng); Red line:Antigen (100 ng)



Western Blotting

Image 2. Western blot analysis using MITF mAb against human MITF (AA: 1-114) recombinant protein. (Expected MW is 38.9 kDa)



Western Blotting

Image 3. Western blot analysis using MITF mAb against HEK293 (1) and MITF (AA: 1-114)-hlgGfc transfected HEK293 (2) cell lysate.

Please check the [product details page](#) for more images. Overall 5 images are available for ABIN5542529.