



[Go to Product page](#)

Datasheet for ABIN5542530
anti-MITF antibody (AA 1-114)

4 Images

Overview

Quantity:	0.1 mg
Target:	MITF
Binding Specificity:	AA 1-114
Reactivity:	Human
Host:	Mouse
Clonality:	Monoclonal
Conjugate:	This MITF antibody is un-conjugated
Application:	Western Blotting (WB), Immunohistochemistry (IHC), Flow Cytometry (FACS), ELISA, Immunocytochemistry (ICC)

Product Details

Immunogen:	Purified recombinant fragment of human MITF (AA: 1-114) expressed in E. coli.
Clone:	3A2E2
Isotype:	IgG1
Purification:	purified

Target Details

Target:	MITF
Alternative Name:	MITF (MITF Products)
Background:	Description: This gene encodes a transcription factor that contains both basic helix-loop-helix

Target Details

and leucine zipper structural features. It regulates the differentiation and development of melanocytes retinal pigment epithelium and is also responsible for pigment cell-specific transcription of the melanogenesis enzyme genes. Heterozygous mutations in the this gene cause auditory-pigmentary syndromes, such as Waardenburg syndrome type 2 and Tietz syndrome. Alternatively spliced transcript variants encoding different isoforms have been identified.,

Aliases: MI, WS2, CMM8, WS2A, bHLHe32

Molecular Weight: 58.8 kDa

Gene ID: 4286

HGNC: 3106

Pathways: [Chromatin Binding](#)

Application Details

Application Notes: ELISA: 1:10000, WB: 1:500 - 1:2000, IHC: , ICC: , FCM: 1:200 - 1:400

Restrictions: For Research Use only

Handling

Format: Liquid

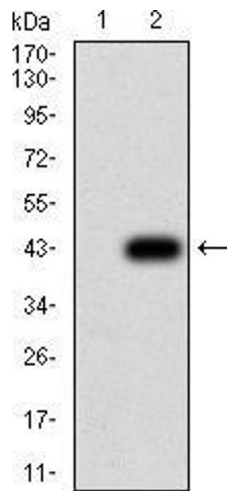
Buffer: Purified antibody in PBS with 0.05 % sodium azide

Preservative: Sodium azide

Precaution of Use: This product contains Sodium azide: a POISONOUS AND HAZARDOUS SUBSTANCE which should be handled by trained staff only.

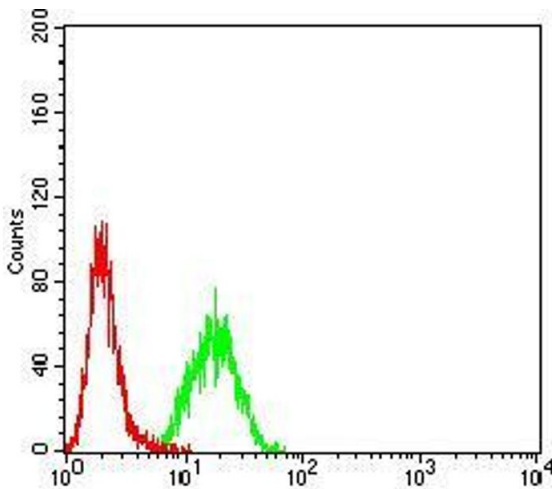
Storage: 4 °C/-20 °C

Storage Comment: 4°C, -20°C for long term storage



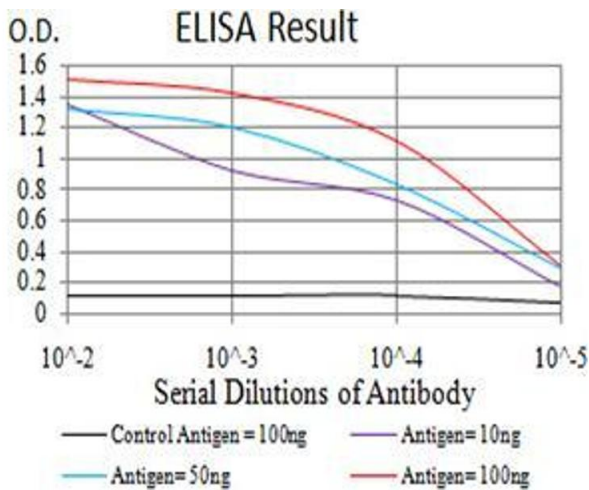
Western Blotting

Image 1. Western blot analysis using MITF mAb against HEK293 (1) and MITF (AA: 1-114)-hlgGfc transfected HEK293 (2) cell lysate.



Flow Cytometry

Image 2. Flow cytometric analysis of Hela cells using MITF mouse mAb (green) and negative control (red).



ELISA

Image 3. Black line: Control Antigen (100 ng), Purple line: Antigen (10 ng), Blue line: Antigen (50 ng), Red line: Antigen (100 ng)

Please check the [product details page](#) for more images. Overall 4 images are available for ABIN5542530.