



[Go to Product page](#)

Datasheet for ABIN5542531

## anti-RAB11FIP1 antibody (AA 130-271)

### 8 Images

#### Overview

Quantity:	0.1 mg
Target:	RAB11FIP1
Binding Specificity:	AA 130-271
Reactivity:	Human, Mouse
Host:	Mouse
Clonality:	Monoclonal
Conjugate:	This RAB11FIP1 antibody is un-conjugated
Application:	Western Blotting (WB), ELISA, Immunohistochemistry (IHC), Immunocytochemistry (ICC), Flow Cytometry (FACS)

#### Product Details

Immunogen:	Purified recombinant fragment of human RAB11FIP1 (AA: 130-271) expressed in E. coli.
Clone:	1A12B9D8
Isotype:	IgG1
Purification:	purified

#### Target Details

Target:	RAB11FIP1
Alternative Name:	RAB11FIP1 ( <a href="#">RAB11FIP1 Products</a> )
Background:	Description: This gene encodes one of the Rab11-family interacting proteins (Rab11-FIPs),

## Target Details

---

which play a role in the Rab-11 mediated recycling of vesicles. The encoded protein may be involved in endocytic sorting, trafficking of proteins including integrin subunits and epidermal growth factor receptor (EGFR), and transport between the recycling endosome and the trans-Golgi network. Alternative splicing results in multiple transcript variants. A pseudogene is described on the X chromosome,

Aliases: RCP, NOEL1A, rab11-FIP1

---

Molecular Weight: 137.2 kDa

---

Gene ID: 80223

---

HGNC: 80223

## Application Details

---

Application Notes: ELISA: 1:10000, WB: 1:500 - 1:2000, IHC: 1:200 - 1:1000, ICC: 1:200 - 1:1000, FCM: 1:200 - 1:400

---

Restrictions: For Research Use only

## Handling

---

Format: Liquid

---

Buffer: Purified antibody in PBS with 0.05 % sodium azide

---

Preservative: Sodium azide

---

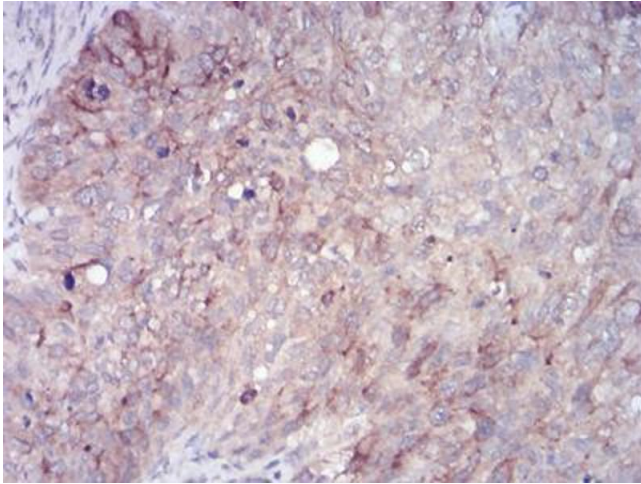
Precaution of Use: This product contains Sodium azide: a POISONOUS AND HAZARDOUS SUBSTANCE which should be handled by trained staff only.

---

Storage: 4 °C/-20 °C

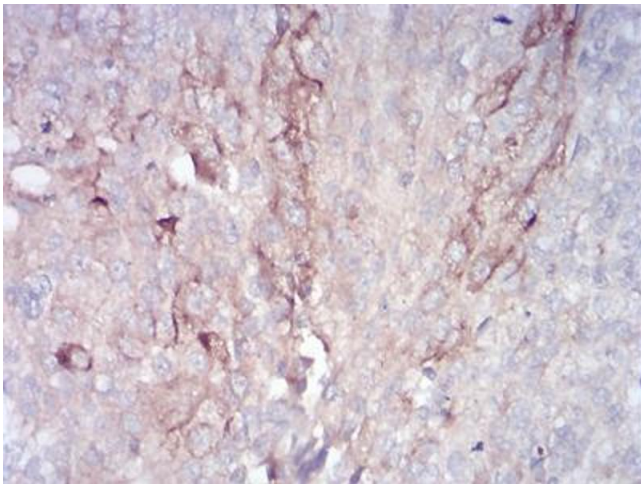
---

Storage Comment: 4°C, -20°C for long term storage



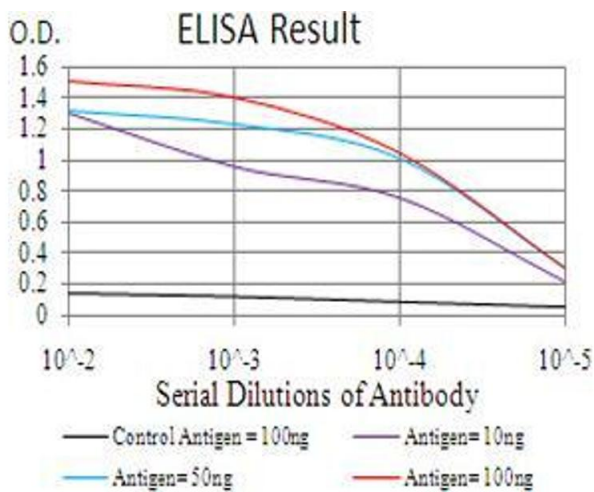
### Immunohistochemistry

**Image 1.** Immunohistochemical analysis of paraffin-embedded cervical cancer tissues using RAB11FIP1 mouse mAb with DAB staining.



### Immunohistochemistry

**Image 2.** Immunohistochemical analysis of paraffin-embedded bladder cancer tissues using RAB11FIP1 mouse mAb with DAB staining.



### ELISA

**Image 3.** Black line: Control Antigen (100 ng), Purple line: Antigen(10 ng), Blue line: Antigen (50 ng), Red line: Antigen (100 ng),

Please check the [product details page](#) for more images. Overall 8 images are available for ABIN5542531.