

Datasheet for ABIN5542534
anti-NOTCH3 antibody (AA 47-156)[Go to Product page](#)

3 Images

Overview

Quantity:	0.1 mg
Target:	NOTCH3
Binding Specificity:	AA 47-156
Reactivity:	Human
Host:	Mouse
Clonality:	Monoclonal
Conjugate:	This NOTCH3 antibody is un-conjugated
Application:	Western Blotting (WB), ELISA, Immunohistochemistry (IHC), Flow Cytometry (FACS), Immunocytochemistry (ICC)

Product Details

Immunogen:	Purified recombinant fragment of human Notch3 (AA: 47-156) expressed in E. coli.
Clone:	3E2D9
Isotype:	IgG2a
Purification:	purified

Target Details

Target:	NOTCH3
Alternative Name:	Notch3 (NOTCH3 Products)
Background:	Description: This gene encodes the third discovered human homologue of the Drosophila

Target Details

melanogaster type I membrane protein notch. In Drosophila, notch interaction with its cell-bound ligands (delta, serrate) establishes an intercellular signalling pathway that plays a key role in neural development. Homologues of the notch-ligands have also been identified in human, but precise interactions between these ligands and the human notch homologues remains to be determined. Mutations in NOTCH3 have been identified as the underlying cause of cerebral autosomal dominant arteriopathy with subcortical infarcts and leukoencephalopathy (CADASIL). ,
Aliases: IMF2, CASIL, CADASIL

Molecular Weight: 243.6 kDa

Gene ID: 4854

HGNC: 4854

Pathways: [Notch Signaling](#)

Application Details

Application Notes: ELISA: 1:10000, WB: 1:500 - 1:2000, IHC: , ICC: , FCM:

Restrictions: For Research Use only

Handling

Format: Liquid

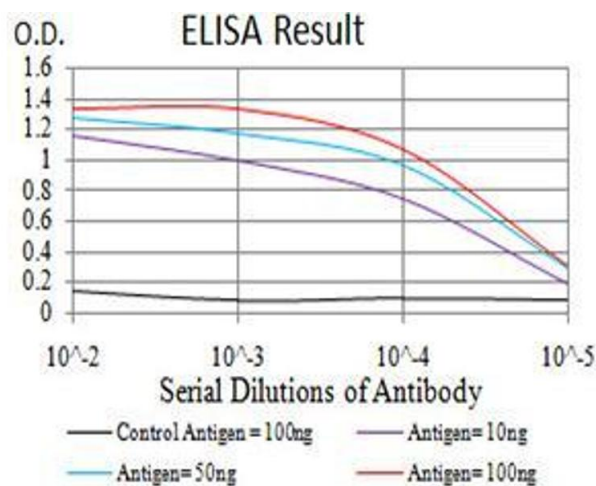
Buffer: Purified antibody in PBS with 0.05 % sodium azide

Preservative: Sodium azide

Precaution of Use: This product contains Sodium azide: a POISONOUS AND HAZARDOUS SUBSTANCE which should be handled by trained staff only.

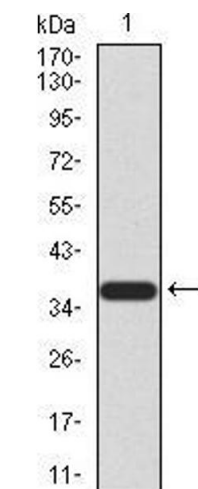
Storage: 4 °C/-20 °C

Storage Comment: 4°C, -20°C for long term storage



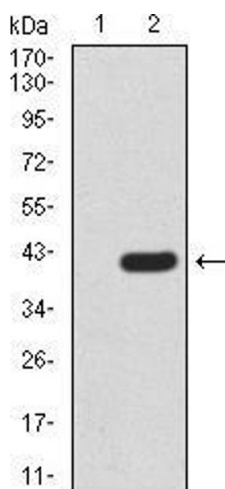
ELISA

Image 1. Black line: Control Antigen (100 ng), Purple line: Antigen(10 ng), Blue line: Antigen (50 ng), Red line: Antigen (100 ng),



Western Blotting

Image 2. Western blot analysis using Notch3 mAb against human Notch3 (AA: 47-156) recombinant protein. (Expected MW is 37.3 kDa)



Western Blotting

Image 3. Western blot analysis using Notch3 mAb against HEK293 (1) and Notch3 (AA: 47-156)-hlgGFc transfected HEK293 (2) cell lysate.