

Datasheet for ABIN5542542  
**anti-SH3GL1 antibody (AA 12-119)**[Go to Product page](#)

## 4 Images

## Overview

Quantity:	0.1 mg
Target:	SH3GL1
Binding Specificity:	AA 12-119
Reactivity:	Human, Rat
Host:	Mouse
Clonality:	Monoclonal
Conjugate:	This SH3GL1 antibody is un-conjugated
Application:	Western Blotting (WB), ELISA, Immunohistochemistry (IHC), Flow Cytometry (FACS), Immunocytochemistry (ICC)

## Product Details

Immunogen:	Purified recombinant fragment of human SH3GL1 (AA: 12-119) expressed in E. coli.
Clone:	4B4C2
Isotype:	IgG1
Purification:	purified

## Target Details

Target:	SH3GL1
Alternative Name:	SH3GL1 ( <a href="#">SH3GL1 Products</a> )
Background:	Description: This gene encodes a member of the endophilin family of Src homology 3 domain-

## Target Details

containing proteins. The encoded protein is involved in endocytosis and may also play a role in the cell cycle. Overexpression of this gene may play a role in leukemogenesis, and the encoded protein has been implicated in acute myeloid leukemia as a fusion partner of the myeloid-lymphoid leukemia protein. Pseudogenes of this gene are located on the long arm of chromosomes 11 and 17. Alternatively spliced transcript variants encoding multiple isoforms have been observed for this gene.,

Aliases: EEN, CNSA1, SH3P8, SH3D2B

Molecular Weight:	41.5 kDa
-------------------	----------

Gene ID:	6455
----------	------

HGNC:	6455
-------	------

## Application Details

Application Notes:	ELISA: 1:10000, WB: 1:500 - 1:2000, IHC: , ICC: , FCM:
--------------------	--

Restrictions:	For Research Use only
---------------	-----------------------

## Handling

Format:	Liquid
---------	--------

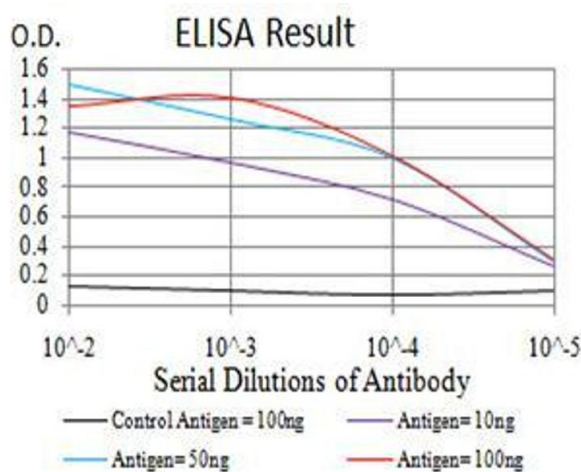
Buffer:	Purified antibody in PBS with 0.05 % sodium azide
---------	---

Preservative:	Sodium azide
---------------	--------------

Precaution of Use:	This product contains Sodium azide: a POISONOUS AND HAZARDOUS SUBSTANCE which should be handled by trained staff only.
--------------------	--

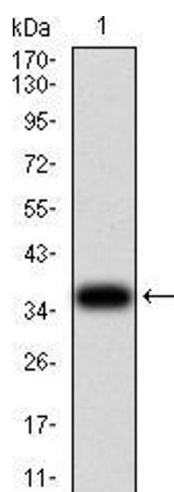
Storage:	4 °C/-20 °C
----------	-------------

Storage Comment:	4°C, -20°C for long term storage
------------------	----------------------------------



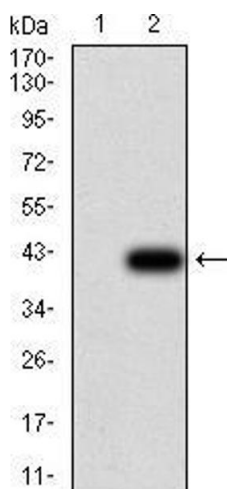
#### ELISA

**Image 1.** Black line: Control Antigen (100 ng), Purple line: Antigen (10 ng), Blue line: Antigen (50 ng), Red line: Antigen (100 ng)



#### Western Blotting

**Image 2.** Western blot analysis using SH3GL1 mAb against human SH3GL1 (AA: 12-119) recombinant protein. (Expected MW is 37.6 kDa)



#### Western Blotting

**Image 3.** Western blot analysis using SH3GL1 mAb against HEK293 (1) and SH3GL1 (AA: 12-119)-hlgGFc transfected HEK293 (2) cell lysate.

Please check the [product details page](#) for more images. Overall 4 images are available for ABIN5542542.