



[Go to Product page](#)

Datasheet for ABIN5542547  
**anti-XRCC6 antibody (AA 6-214)**

8 Images

### Overview

Quantity:	0.1 mg
Target:	XRCC6
Binding Specificity:	AA 6-214
Reactivity:	Human
Host:	Mouse
Clonality:	Monoclonal
Conjugate:	This XRCC6 antibody is un-conjugated
Application:	Western Blotting (WB), ELISA, Immunohistochemistry (IHC), Flow Cytometry (FACS), Immunocytochemistry (ICC)

### Product Details

Immunogen:	Purified recombinant fragment of human XRCC6 (AA: 6-214) expressed in E. coli.
Clone:	2F7F5
Isotype:	IgG1
Purification:	purified

### Target Details

Target:	XRCC6
Alternative Name:	XRCC6 ( <a href="#">XRCC6 Products</a> )
Background:	Description: The p70/p80 autoantigen is a nuclear complex consisting of two subunits with

## Target Details

---

molecular masses of approximately 70 and 80 kDa. The complex functions as a single-stranded DNA-dependent ATP-dependent helicase. The complex may be involved in the repair of nonhomologous DNA ends such as that required for double-strand break repair, transposition, and V(D)J recombination. High levels of autoantibodies to p70 and p80 have been found in some patients with systemic lupus erythematosus.

Aliases: ML8, KU70, TLAA, CTC75, CTCBF, G22P1

---

Molecular Weight: 69.8 kDa

---

Gene ID: 2547

---

HGNC: 2547

---

Pathways: [DNA Damage Repair](#)

## Application Details

---

Application Notes: ELISA: 1:10000, WB: 1:500 - 1:2000, IHC: 1:200 - 1:1000, ICC: 1:200 - 1:1000, FCM: 1:200 - 1:400

---

Restrictions: For Research Use only

## Handling

---

Format: Liquid

---

Buffer: Purified antibody in PBS with 0.05 % sodium azide.

---

Preservative: Sodium azide

---

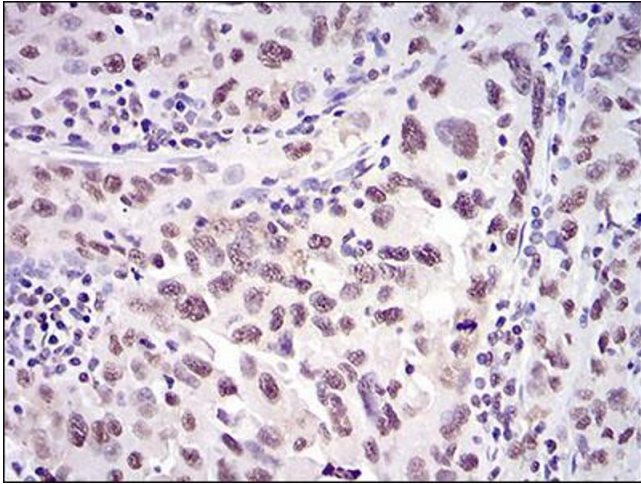
Precaution of Use: This product contains Sodium azide: a POISONOUS AND HAZARDOUS SUBSTANCE which should be handled by trained staff only.

---

Storage: 4 °C/-20 °C

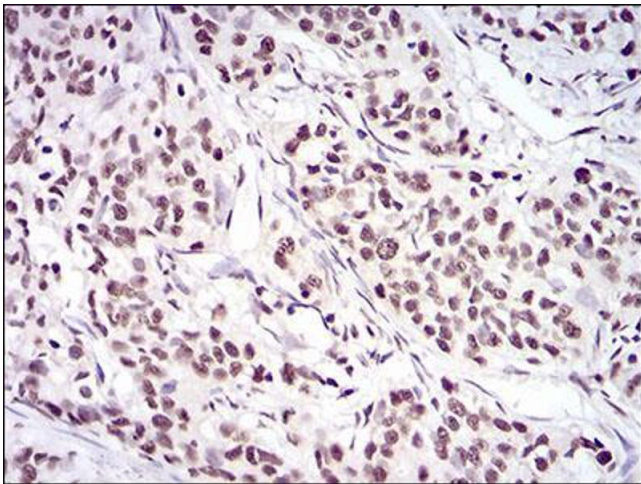
---

Storage Comment: 4°C, -20°C for long term storage



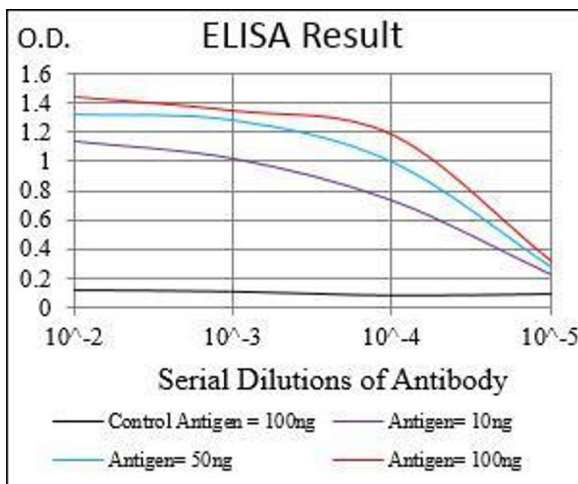
### Immunohistochemistry

**Image 1.** Immunohistochemical analysis of paraffin-embedded endometrial cancer tissues using XRCC6 mouse mAb with DAB staining.



### Immunohistochemistry

**Image 2.** Immunohistochemical analysis of paraffin-embedded cervical cancer tissues using XRCC6 mouse mAb with DAB staining.



### ELISA

**Image 3.** Black line: Control Antigen (100 ng), Purple line: Antigen(10 ng), Blue line: Antigen (50 ng), Red line: Antigen (100 ng),

Please check the [product details page](#) for more images. Overall 8 images are available for ABIN5542547.