

Datasheet for ABIN5542549
anti-YWHAB antibody (AA 1-246)

10 Images

[Go to Product page](#)

Overview

Quantity:	0.1 mg
Target:	YWHAB
Binding Specificity:	AA 1-246
Reactivity:	Human, Mouse, Rat
Host:	Mouse
Clonality:	Monoclonal
Conjugate:	This YWHAB antibody is un-conjugated
Application:	Western Blotting (WB), ELISA, Immunohistochemistry (IHC), Immunocytochemistry (ICC), Flow Cytometry (FACS)

Product Details

Immunogen:	Purified recombinant fragment of human YWHAB (AA: 1-246) expressed in E. coli.
Clone:	5B5G10
Isotype:	IgG2b
Purification:	purified

Target Details

Target:	YWHAB
Alternative Name:	YWHAB (YWHAB Products)
Background:	Description: This gene encodes a protein belonging to the 14-3-3 family of proteins, members

Target Details

of which mediate signal transduction by binding to phosphoserine-containing proteins. This highly conserved protein family is found in both plants and mammals. The encoded protein has been shown to interact with RAF1 and CDC25 phosphatases, suggesting that it may play a role in linking mitogenic signaling and the cell cycle machinery. Two transcript variants, which encode the same protein, have been identified for this gene.,

Aliases: HS1, GW128, YWHAA, KCIP-1, HEL-S-1

Molecular Weight:	28 kDa
-------------------	--------

Gene ID:	7529
----------	------

HGNC:	7529
-------	------

Pathways:	Fc-epsilon Receptor Signaling Pathway , EGFR Signaling Pathway , Neurotrophin Signaling Pathway , Myometrial Relaxation and Contraction , Maintenance of Protein Location
-----------	---

Application Details

Application Notes:	ELISA: 1:10000, WB: 1:500 - 1:2000, IHC: 1:200 - 1:1000, ICC: 1:200 - 1:1000, FCM: 1:200 - 1:400
--------------------	--

Restrictions:	For Research Use only
---------------	-----------------------

Handling

Format:	Liquid
---------	--------

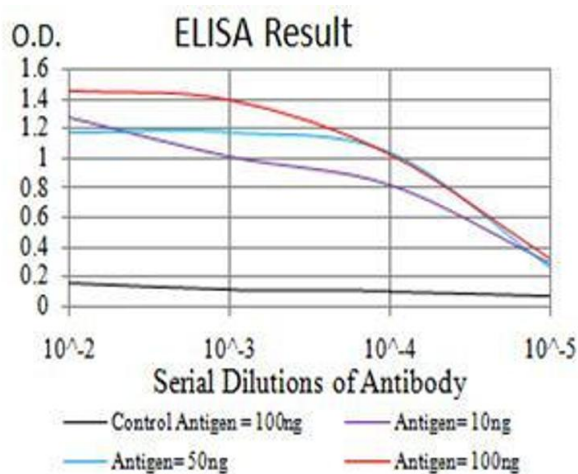
Buffer:	Purified antibody in PBS with 0.05 % sodium azide
---------	---

Preservative:	Sodium azide
---------------	--------------

Precaution of Use:	This product contains Sodium azide: a POISONOUS AND HAZARDOUS SUBSTANCE which should be handled by trained staff only.
--------------------	--

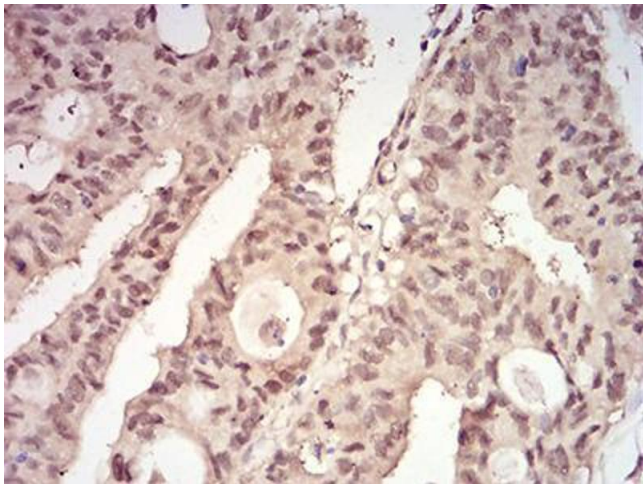
Storage:	4 °C/-20 °C
----------	-------------

Storage Comment:	4°C, -20°C for long term storage
------------------	----------------------------------



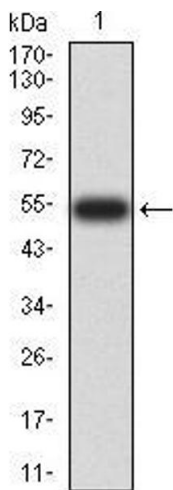
ELISA

Image 1. Black line: Control Antigen (100 ng),Purple line: Antigen (10 ng), Blue line: Antigen (50 ng), Red line:Antigen (100 ng)



Immunohistochemistry

Image 2. Immunohistochemical analysis of paraffin-embedded rectum cancer tissues using YWHAB mouse mAb with DAB staining.



Western Blotting

Image 3. Western blot analysis using YWHAB mAb against human YWHAB (AA: 1-246) recombinant protein. (Expected MW is 54 kDa)

Please check the [product details page](#) for more images. Overall 10 images are available for ABIN5542549.