



Datasheet for ABIN5542553
anti-p130 antibody (AA 939-1139)



[Go to Product page](#)

4 Images

Overview

Quantity:	0.1 mg
Target:	p130 (RBL2)
Binding Specificity:	AA 939-1139
Reactivity:	Human
Host:	Mouse
Clonality:	Monoclonal
Conjugate:	This p130 antibody is un-conjugated
Application:	ELISA, Western Blotting (WB), Flow Cytometry (FACS)

Product Details

Immunogen:	Purified recombinant fragment of human RBL2 (AA: 939-1139) expressed in E. coli.
Clone:	2C8A8
Isotype:	IgG1
Purification:	purified

Target Details

Target:	p130 (RBL2)
Alternative Name:	RBL2 (RBL2 Products)
Background:	Description: RBL2 is a Key regulator of entry into cell division. Directly involved in heterochromatin formation by maintaining overall chromatin structure and, in particular, that of

Target Details

constitutive heterochromatin by stabilizing histone methylation. Recruits and targets histone methyltransferases SUV420H1 and SUV420H2, leading to epigenetic transcriptional repression. Controls histone H4 'Lys-20' trimethylation. Probably acts as a transcription repressor by recruiting chromatin-modifying enzymes to promoters. Potent inhibitor of E2F-mediated transactivation, associates preferentially with E2F5. Binds to cyclins A and E. Binds to and may be involved in the transforming capacity of the adenovirus E1A protein. May act as a tumor suppressor.

Aliases: Rb2, P130

Molecular Weight: 128.4 kDa

Gene ID: 5934

HGNC: 5934

Pathways: [Cell Division Cycle, Mitotic G1-G1/S Phases](#)

Application Details

Application Notes: ELISA: 1:10000, WB: 1:500 - 1:2000, FCM: 1:200 - 1:400

Restrictions: For Research Use only

Handling

Format: Liquid

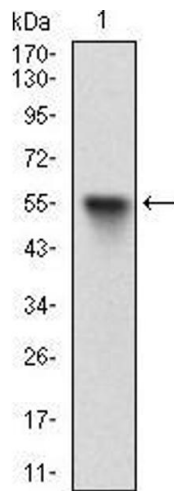
Buffer: Purified antibody in PBS with 0.05 % sodium azide.

Preservative: Sodium azide

Precaution of Use: This product contains Sodium azide: a POISONOUS AND HAZARDOUS SUBSTANCE which should be handled by trained staff only.

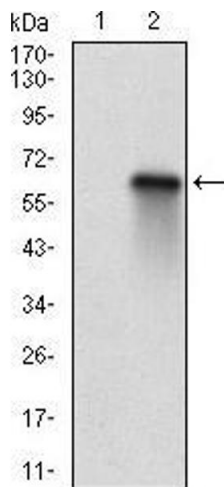
Storage: 4 °C/-20 °C

Storage Comment: 4°C, -20°C for long term storage



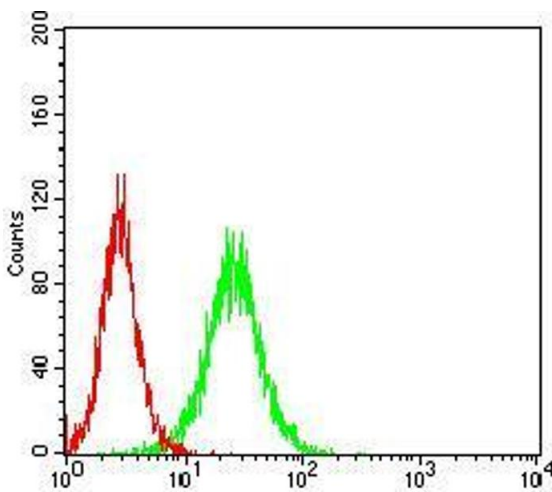
Western Blotting

Image 1. Western blot analysis using RBL2 mAb against human RBL2 (AA: 939-1139) recombinant protein. (Expected MW is 48.7 kDa)



Western Blotting

Image 2. Western blot analysis using RBL2 mAb against HEK293 (1) and RBL2 (AA: 939-1139)-hlgGfC transfected HEK293 (2) cell lysate.



Flow Cytometry

Image 3. Flow cytometric analysis of HeLa cells using RBL2 mouse mAb (green) and negative control (red).

Please check the [product details page](#) for more images. Overall 4 images are available for ABIN5542553.