



[Go to Product page](#)

Datasheet for ABIN5542556

anti-LI Cadherin antibody (AA 600-707)

5 Images

Overview

Quantity:	0.1 mg
Target:	LI Cadherin
Binding Specificity:	AA 600-707
Reactivity:	Human
Host:	Mouse
Clonality:	Monoclonal
Conjugate:	This LI Cadherin antibody is un-conjugated
Application:	Western Blotting (WB), ELISA, Immunohistochemistry (IHC)

Product Details

Immunogen:	Purified recombinant fragment of human CDH17 (AA: extra(600-707)) expressed in E. coli.
Clone:	7D10E1
Isotype:	IgG1
Purification:	purified

Target Details

Target:	LI Cadherin
Alternative Name:	CDH17 (LI Cadherin Products)
Background:	Description: This gene is a member of the cadherin superfamily, genes encoding calcium-dependent, membrane-associated glycoproteins. The encoded protein is cadherin-like,

Target Details

consisting of an extracellular region, containing 7 cadherin domains, and a transmembrane region but lacking the conserved cytoplasmic domain. The protein is a component of the gastrointestinal tract and pancreatic ducts, acting as an intestinal proton-dependent peptide transporter in the first step in oral absorption of many medically important peptide-based drugs. The protein may also play a role in the morphological organization of liver and intestine. Alternative splicing results in multiple transcript variants.

Aliases: HPT1, CDH16, HPT-1

Molecular Weight:	92.2 kDa
-------------------	----------

Gene ID:	1015
----------	------

HGNC:	1015
-------	------

Application Details

Application Notes:	ELISA: 1:10000, WB: 1:500 - 1:2000, IHC: 1:200 - 1:1000
--------------------	---

Restrictions:	For Research Use only
---------------	-----------------------

Handling

Format:	Liquid
---------	--------

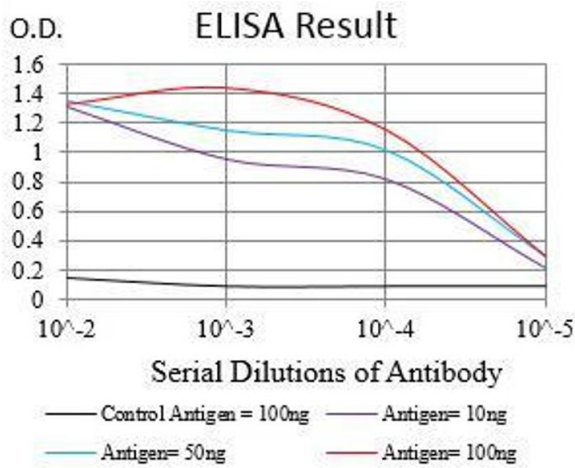
Buffer:	Purified antibody in PBS with 0.05 % sodium azide.
---------	--

Preservative:	Sodium azide
---------------	--------------

Precaution of Use:	This product contains Sodium azide: a POISONOUS AND HAZARDOUS SUBSTANCE which should be handled by trained staff only.
--------------------	--

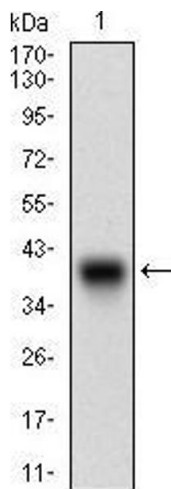
Storage:	4 °C/-20 °C
----------	-------------

Storage Comment:	4°C, -20°C for long term storage
------------------	----------------------------------



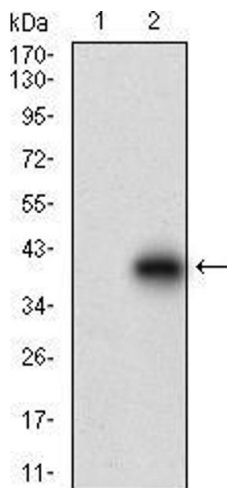
ELISA

Image 1. Black line: Control Antigen (100 ng), Purple line: Antigen(10 ng), Blue line: Antigen (50 ng), Red line: Antigen (100 ng),



Western Blotting

Image 2. Western blot analysis using CDH17 mAb against human CDH17 (AA: extra(600-707)) recombinant protein. (Expected MW is 37.9 kDa)



Western Blotting

Image 3. Western blot analysis using CDH17 mAb against HEK293 (1) and CDH17 (AA: extra(600-707))-hlgGFc transfected HEK293 (2) cell lysate.

Please check the [product details page](#) for more images. Overall 5 images are available for ABIN5542556.