



Datasheet for ABIN5542573
anti-CD13 antibody (AA 781-967)



[Go to Product page](#)

4 Images

Overview

Quantity:	0.1 mg
Target:	CD13 (ANPEP)
Binding Specificity:	AA 781-967
Reactivity:	Human
Host:	Mouse
Clonality:	Monoclonal
Conjugate:	This CD13 antibody is un-conjugated
Application:	Flow Cytometry (FACS), Western Blotting (WB), ELISA

Product Details

Immunogen:	Purified recombinant fragment of human ANPEP (AA: Extra(781-967)) expressed in E. coli.
Clone:	1C7D7
Isotype:	IgG1
Purification:	purified

Target Details

Target:	CD13 (ANPEP)
Alternative Name:	ANPEP (ANPEP Products)
Background:	Description: Aminopeptidase N is located in the small-intestinal and renal microvillar membrane, and also in other plasma membranes. In the small intestine aminopeptidase N

Target Details

plays a role in the final digestion of peptides generated from hydrolysis of proteins by gastric and pancreatic proteases. Its function in proximal tubular epithelial cells and other cell types is less clear. The large extracellular carboxyterminal domain contains a pentapeptide consensus sequence characteristic of members of the zinc-binding metalloproteinase superfamily. Sequence comparisons with known enzymes of this class showed that CD13 and aminopeptidase N are identical. The latter enzyme was thought to be involved in the metabolism of regulatory peptides by diverse cell types, including small intestinal and renal tubular epithelial cells, macrophages, granulocytes, and synaptic membranes from the CNS. Human aminopeptidase N is a receptor for one strain of human coronavirus that is an important cause of upper respiratory tract infections. Defects in this gene appear to be a cause of various types of leukemia or lymphoma.

Aliases: APN, CD13, LAP1, P150, PEPN, GP150

Molecular Weight: 110 kDa

Gene ID: 290

HGNC: 290

Pathways: [Peptide Hormone Metabolism](#), [Regulation of Systemic Arterial Blood Pressure by Hormones](#)

Application Details

Application Notes: ELISA: 1:10000, WB: 1:500 - 1:2000, FCM: 1:200 - 1:400

Restrictions: For Research Use only

Handling

Format: Liquid

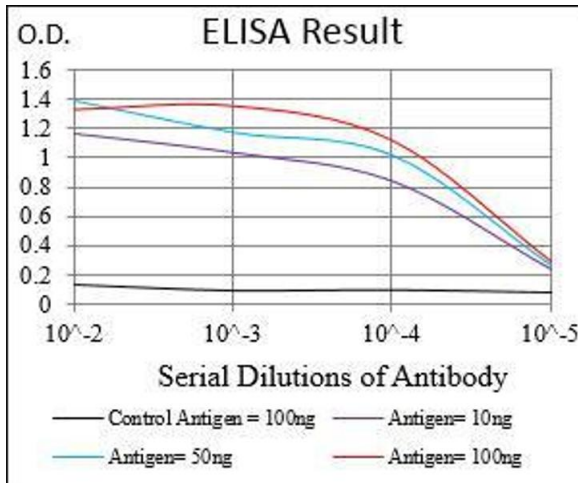
Buffer: Purified antibody in PBS with 0.05 % sodium azide.

Preservative: Sodium azide

Precaution of Use: This product contains Sodium azide: a POISONOUS AND HAZARDOUS SUBSTANCE which should be handled by trained staff only.

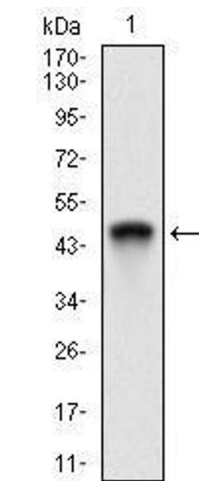
Storage: 4 °C/-20 °C

Storage Comment: 4°C, -20°C for long term storage



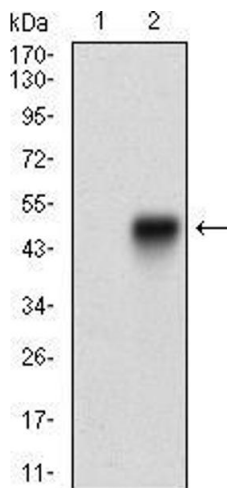
ELISA

Image 1. Black line: Control Antigen (100 ng), Purple line: Antigen(10 ng), Blue line: Antigen (50 ng), Red line: Antigen (100 ng),



Western Blotting

Image 2. Western blot analysis using ANPEP mAb against human ANPEP (AA: Extra(781-967)) recombinant protein. (Expected MW is 47.4 kDa)



Western Blotting

Image 3. Western blot analysis using ANPEP mAb against HEK293 (1) and ANPEP (AA: Extra(781-967))-hlgGfc transfected HEK293 (2) cell lysate.

Please check the [product details page](#) for more images. Overall 4 images are available for ABIN5542573.