



[Go to Product page](#)

Datasheet for ABIN5542574  
**anti-LSD1 antibody (AA 55-263)**

9 Images

### Overview

Quantity:	0.1 mg
Target:	LSD1 (KDM1A)
Binding Specificity:	AA 55-263
Reactivity:	Human
Host:	Mouse
Clonality:	Monoclonal
Conjugate:	This LSD1 antibody is un-conjugated
Application:	Western Blotting (WB), ELISA, Immunohistochemistry (IHC), Flow Cytometry (FACS), Immunocytochemistry (ICC)

### Product Details

Immunogen:	Purified recombinant fragment of human KDM1A (AA: 55-263) expressed in E. coli.
Clone:	3F9D2
Isotype:	IgG1
Purification:	purified

### Target Details

Target:	LSD1 (KDM1A)
Alternative Name:	KDM1A ( <a href="#">KDM1A Products</a> )
Background:	Description: This gene encodes a nuclear protein containing a SWIRM domain, a FAD-binding

## Target Details

---

motif, and an amine oxidase domain. This protein is a component of several histone deacetylase complexes, though it silences genes by functioning as a histone demethylase. Alternative splicing results in multiple transcript variants.,  
Aliases: AOF2, CPRF, KDM1, LSD1, BHC110

---

Molecular Weight: 93 kDa

---

Gene ID: 23028

---

HGNC: 23028

---

Pathways: [Regulation of Hormone Metabolic Process](#), [Regulation of Hormone Biosynthetic Process](#),  
[Negative Regulation of intrinsic apoptotic Signaling](#), [Warburg Effect](#)

## Application Details

---

---

Application Notes: ELISA: 1:10000, WB: 1:500 - 1:2000, IHC: 1:200 - 1:1000, ICC: 1:200 - 1:1000, FCM: 1:200 - 1:400

---

Restrictions: For Research Use only

## Handling

---

---

Format: Liquid

---

Buffer: Purified antibody in PBS with 0.05 % sodium azide

---

Preservative: Sodium azide

---

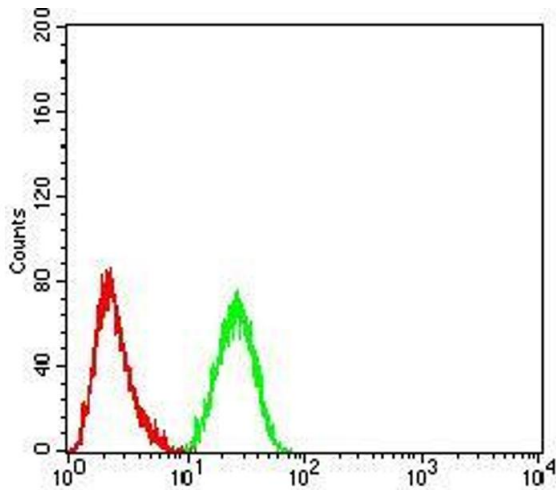
Precaution of Use: This product contains Sodium azide: a POISONOUS AND HAZARDOUS SUBSTANCE which should be handled by trained staff only.

---

Storage: 4 °C/-20 °C

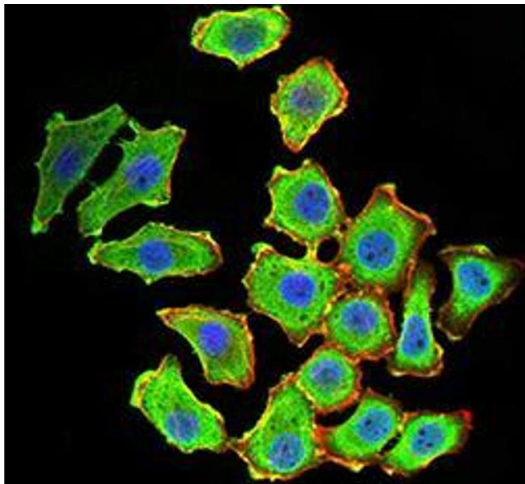
---

Storage Comment: 4°C, -20°C for long term storage



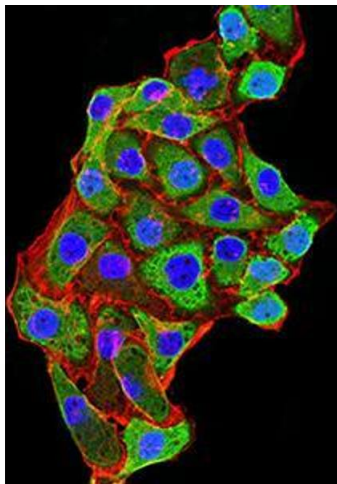
### Flow Cytometry

**Image 1.** Flow cytometric analysis of HeLa cells using KDM1A mouse mAb (green) and negative control (red).



### Immunocytochemistry

**Image 2.** Immunofluorescence analysis of HL-7702 cells using KDM1A mouse mAb (green). Blue: DRAQ5 fluorescent DNA dye. Red: Actin filaments have been labeled with Alexa Fluor- 555 phalloidin. Secondary antibody from Fisher



### Immunocytochemistry

**Image 3.** Immunofluorescence analysis of MCF-7 cells using KDM1A mouse mAb (green). Blue: DRAQ5 fluorescent DNA dye. Red: Actin filaments have been labeled with Alexa Fluor- 555 phalloidin. Secondary antibody from Fisher

Please check the [product details page](#) for more images. Overall 9 images are available for ABIN5542574.