

Datasheet for ABIN5542576
anti-LSD1 antibody (AA 55-263)

8 Images

[Go to Product page](#)

Overview

Quantity:	0.1 mg
Target:	LSD1 (KDM1A)
Binding Specificity:	AA 55-263
Reactivity:	Human, Monkey
Host:	Mouse
Clonality:	Monoclonal
Conjugate:	This LSD1 antibody is un-conjugated
Application:	Western Blotting (WB), ELISA, Immunohistochemistry (IHC), Flow Cytometry (FACS), Immunocytochemistry (ICC)

Product Details

Immunogen:	Purified recombinant fragment of human KDM1A (AA: 55-263) expressed in E. coli.
Clone:	3F9A3
Isotype:	IgG1
Purification:	purified

Target Details

Target:	LSD1 (KDM1A)
Alternative Name:	KDM1A (KDM1A Products)
Background:	Description: This gene encodes a nuclear protein containing a SWIRM domain, a FAD-binding

Target Details

motif, and an amine oxidase domain. This protein is a component of several histone deacetylase complexes, though it silences genes by functioning as a histone demethylase. Alternative splicing results in multiple transcript variants.,
Aliases: AOF2, CPRF, KDM1, LSD1, BHC110

Molecular Weight: 93 kDa

Gene ID: 23028

HGNC: 23028

Pathways: [Regulation of Hormone Metabolic Process](#), [Regulation of Hormone Biosynthetic Process](#),
[Negative Regulation of intrinsic apoptotic Signaling](#), [Warburg Effect](#)

Application Details

Application Notes: ELISA: 1:10000, WB: 1:500 - 1:2000, IHC: 1:200 - 1:1000, ICC: 1:200 - 1:1000, FCM: 1:200 - 1:400

Restrictions: For Research Use only

Handling

Format: Liquid

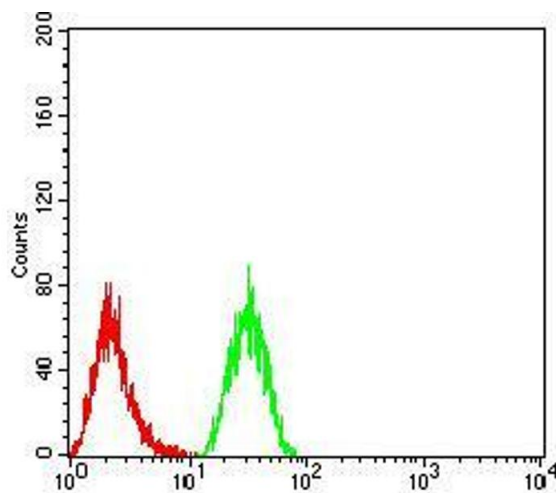
Buffer: Purified antibody in PBS with 0.05 % sodium azide

Preservative: Sodium azide

Precaution of Use: This product contains Sodium azide: a POISONOUS AND HAZARDOUS SUBSTANCE which should be handled by trained staff only.

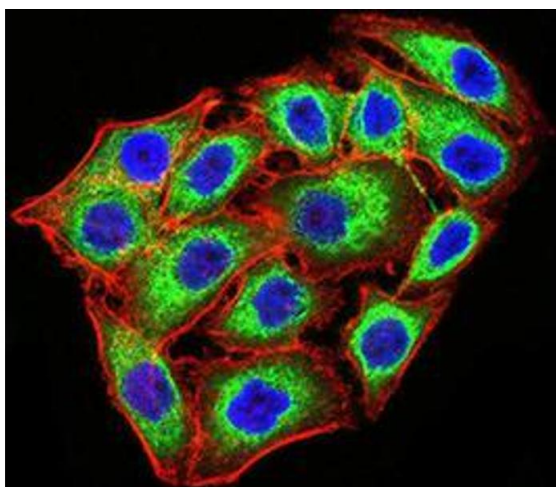
Storage: 4 °C/-20 °C

Storage Comment: 4°C, -20°C for long term storage



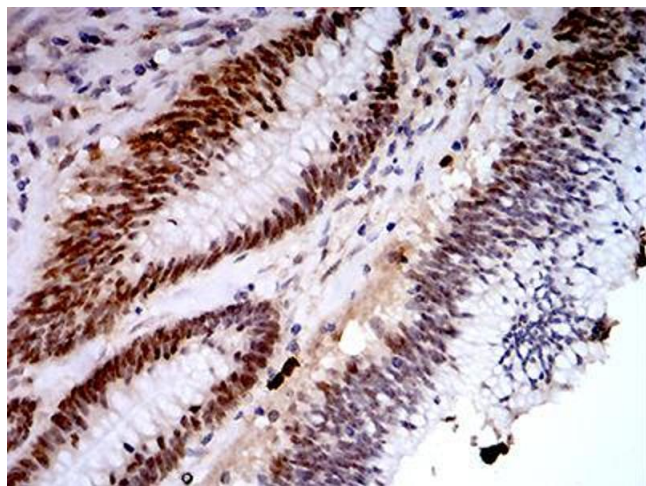
Flow Cytometry

Image 1. Flow cytometric analysis of Hela cells using KDM1A mouse mAb (green) and negative control (red).



Immunocytochemistry

Image 2. Immunofluorescence analysis of MCF-7 cells using KDM1A mouse mAb (green). Blue: DRAQ5 fluorescent DNA dye. Red: Actin filaments have been labeled with Alexa Fluor-555 phalloidin. Secondary antibody from Fisher



Immunohistochemistry

Image 3. Immunohistochemical analysis of paraffin-embedded colon cancer tissues using KDM1A mouse mAb with DAB staining.

Please check the [product details page](#) for more images. Overall 8 images are available for ABIN5542576.