

Datasheet for ABIN5542580
anti-PYCARD antibody (AA 1-120)

7 Images

[Go to Product page](#)

Overview

Quantity:	0.1 mg
Target:	PYCARD
Binding Specificity:	AA 1-120
Reactivity:	Human
Host:	Mouse
Clonality:	Monoclonal
Conjugate:	This PYCARD antibody is un-conjugated
Application:	Western Blotting (WB), ELISA, Immunohistochemistry (IHC), Flow Cytometry (FACS), Immunocytochemistry (ICC)

Product Details

Immunogen:	Purified recombinant fragment of human PYCARD (AA: 1-120) expressed in E. coli.
Clone:	1C3D3
Isotype:	IgG1
Purification:	purified

Target Details

Target:	PYCARD
Alternative Name:	PYCARD (PYCARD Products)
Background:	Description: This gene encodes an adaptor protein that is composed of two protein-protein

Target Details

interaction domains: a N-terminal PYRIN-PAAD-DAPIN domain (PYD) and a C-terminal caspase-recruitment domain (CARD). The PYD and CARD domains are members of the six-helix bundle death domain-fold superfamily that mediates assembly of large signaling complexes in the inflammatory and apoptotic signaling pathways via the activation of caspase. In normal cells, this protein is localized to the cytoplasm, however, in cells undergoing apoptosis, it forms ball-like aggregates near the nuclear periphery. Two transcript variants encoding different isoforms have been found for this gene.,

Aliases: ASC, TMS, TMS1, CARD5, TMS-1

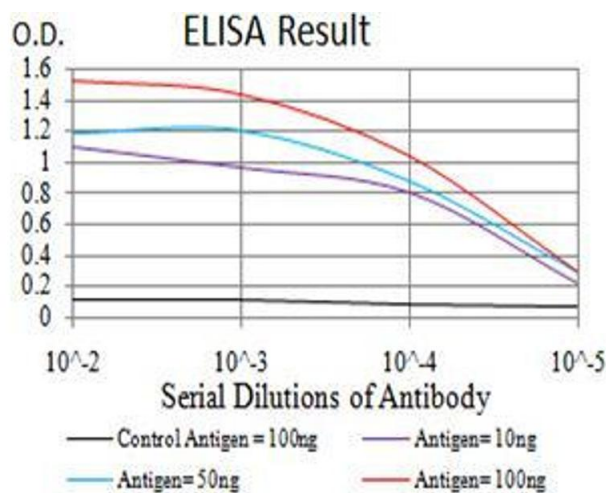
Molecular Weight:	21.6 kDa
Gene ID:	29108
HGNC:	29108
Pathways:	Activation of Innate immune Response , Cellular Response to Molecule of Bacterial Origin , Regulation of Actin Filament Polymerization , Positive Regulation of Endopeptidase Activity , Activated T Cell Proliferation , Inflammasome

Application Details

Application Notes:	ELISA: 1:10000, WB: 1:500 - 1:2000, IHC: 1:200 - 1:1000, ICC: 1:200 - 1:1000, FCM: 1:200 - 1:400
Restrictions:	For Research Use only

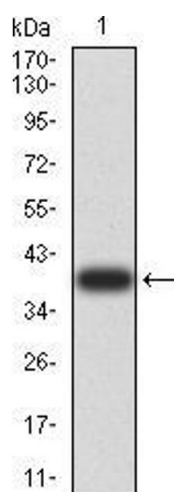
Handling

Format:	Liquid
Buffer:	Purified antibody in PBS with 0.05 % sodium azide
Preservative:	Sodium azide
Precaution of Use:	This product contains Sodium azide: a POISONOUS AND HAZARDOUS SUBSTANCE which should be handled by trained staff only.
Storage:	4 °C/-20 °C
Storage Comment:	4°C, -20°C for long term storage



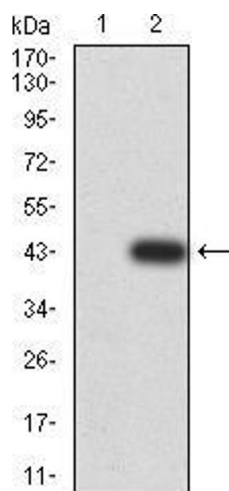
ELISA

Image 1. Black line: Control Antigen (100 ng);Purple line: Antigen (10ng); Blue line: Antigen (50 ng); Red line:Antigen (100 ng)



Western Blotting

Image 2. Western blot analysis using PYCARD mAb against human PYCARD (AA: 1-120) recombinant protein. (Expected MW is 39.2 kDa)



Western Blotting

Image 3. Western blot analysis using PYCARD mAb against HEK293 (1) and PYCARD (AA: 1-120)-hlgGfc transfected HEK293 (2) cell lysate.

Please check the [product details page](#) for more images. Overall 7 images are available for ABIN5542580.