

Datasheet for ABIN5542582
anti-ASH2L antibody (AA 493-628)[Go to Product page](#)

7 Images

Overview

Quantity:	0.1 mg
Target:	ASH2L
Binding Specificity:	AA 493-628
Reactivity:	Human, Mouse
Host:	Mouse
Clonality:	Monoclonal
Conjugate:	This ASH2L antibody is un-conjugated
Application:	Western Blotting (WB), ELISA, Immunohistochemistry (IHC), Immunocytochemistry (ICC), Flow Cytometry (FACS)

Product Details

Immunogen:	Purified recombinant fragment of human ASH2L (AA: 493-628) expressed in E. coli.
Clone:	6F6B9
Isotype:	IgG1
Purification:	purified

Target Details

Target:	ASH2L
Alternative Name:	ASH2L (ASH2L Products)
Background:	Description: ASH2L (Ash2 (Absent, Small, Or Homeotic)-Like (Drosophila)) is a Protein Coding

Target Details

gene. Diseases associated with ASH2L include Kabuki Syndrome 1. Among its related pathways are Developmental Biology and Signaling by Wnt. GO annotations related to this gene include transcription regulatory region DNA binding and histone methyltransferase activity (H3-K4 specific),.

Aliases: ASH2, Bre2, ASH2L1, ASH2L2

Molecular Weight:	68.7 kDa
-------------------	----------

Gene ID:	9070
----------	------

HGNC:	7706
-------	------

Application Details

Application Notes:	ELISA: 1:10000, WB: 1:500 - 1:2000, IHC: 1:200 - 1:1000, ICC: , FCM: 1:200 - 1:400
--------------------	--

Restrictions:	For Research Use only
---------------	-----------------------

Handling

Format:	Liquid
---------	--------

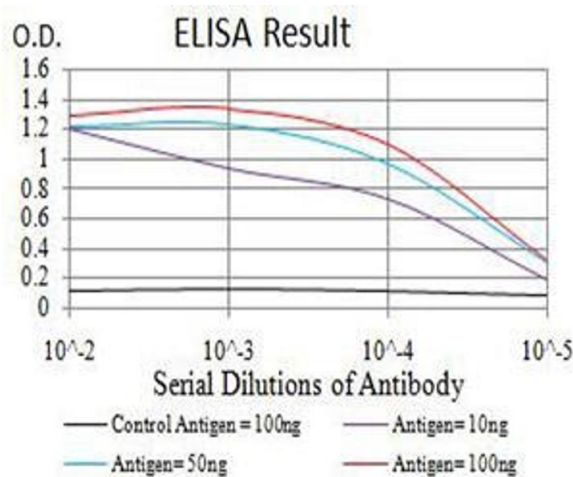
Buffer:	Purified antibody in PBS with 0.05 % sodium azide
---------	---

Preservative:	Sodium azide
---------------	--------------

Precaution of Use:	This product contains Sodium azide: a POISONOUS AND HAZARDOUS SUBSTANCE which should be handled by trained staff only.
--------------------	--

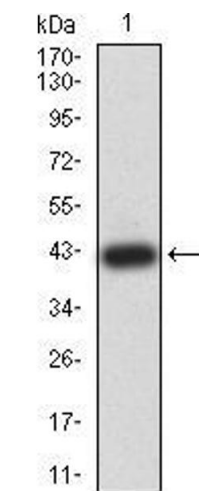
Storage:	4 °C/-20 °C
----------	-------------

Storage Comment:	4°C, -20°C for long term storage
------------------	----------------------------------



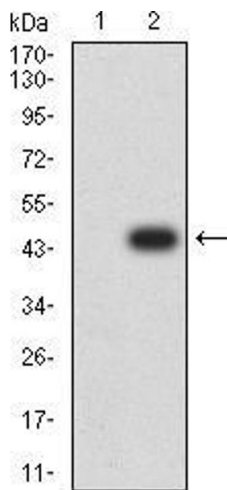
ELISA

Image 1. Black line: Control Antigen (100 ng),Purple line: Antigen (10 ng), Blue line: Antigen (50 ng), Red line:Antigen (100 ng)



Western Blotting

Image 2. Western blot analysis using ASH2L mAb against human ASH2L (AA: 493-628) recombinant protein. (Expected MW is 41.6 kDa)



Western Blotting

Image 3. Western blot analysis using ASH2L mAb against HEK293 (1) and ASH2L (AA: 493-628)-hlgGfc transfected HEK293 (2) cell lysate.

Please check the [product details page](#) for more images. Overall 7 images are available for ABIN5542582.