

Datasheet for ABIN5542583
anti-ATF4 antibody (AA 212-351)

6 Images

[Go to Product page](#)

Overview

Quantity:	0.1 mg
Target:	ATF4
Binding Specificity:	AA 212-351
Reactivity:	Human
Host:	Mouse
Clonality:	Monoclonal
Conjugate:	This ATF4 antibody is un-conjugated
Application:	Western Blotting (WB), ELISA, Immunohistochemistry (IHC), Immunocytochemistry (ICC), Flow Cytometry (FACS)

Product Details

Immunogen:	Purified recombinant fragment of human ATF4 (AA 212-351) expressed in E. Coli.
Clone:	2A6F12
Isotype:	IgG1

Target Details

Target:	ATF4
Alternative Name:	ATF4 (ATF4 Products)
Background:	This gene encodes a transcription factor that was originally identified as a widely expressed mammalian DNA binding protein that could bind a tax-responsive enhancer element in the LTR of HTLV-1. The encoded protein was also isolated and characterized as the cAMP-response

Target Details

element binding protein 2 (CREB-2). The protein encoded by this gene belongs to a family of DNA-binding proteins that includes the AP-1 family of transcription factors, cAMP-response element binding proteins (CREBs) and CREB-like proteins. These transcription factors share a leucine zipper region that is involved in protein-protein interactions, located C-terminal to a stretch of basic amino acids that functions as a DNA binding domain. Two alternative transcripts encoding the same protein have been described. Two pseudogenes are located on the X chromosome at q28 in a region containing a large inverted duplication. ,

Molecular Weight: 33.8kDa

HGNC: 146713

Pathways: [Thyroid Hormone Synthesis](#), [Myometrial Relaxation and Contraction](#), [ER-Nucleus Signaling](#), [Unfolded Protein Response](#)

Application Details

Application Notes: ELISA: 1:10000, WB: 1:500 - 1:2000, IHC: 1:200 - 1:1000, ICC: , FCM:

Restrictions: For Research Use only

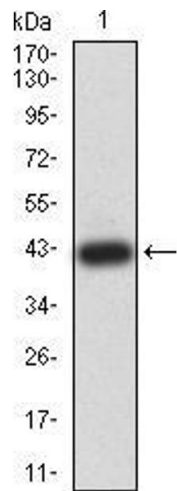
Handling

Format: Liquid

Buffer: PBS with 0.05 % sodium azide

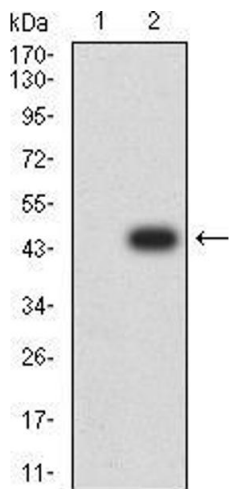
Storage: 4 °C, -20 °C

Storage Comment: 4°C, -20°C for long term storage



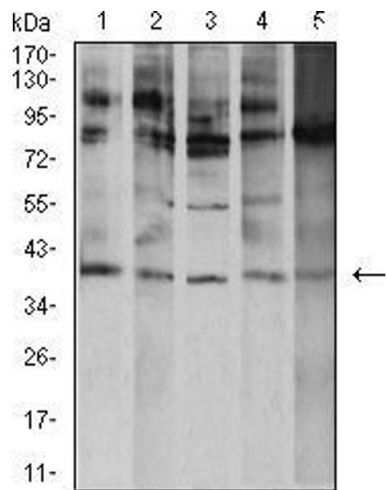
Western Blotting

Image 1. Western blot analysis using ATF4 mAb against human ATF4 (AA: 212-351) recombinant protein. (Expected MW is 41.5 kDa)



Western Blotting

Image 2. Western blot analysis using ATF4 mAb against HEK293 (1) and ATF4 (AA: 212-351)-hlgGfC transfected HEK293 (2) cell lysate.



Western Blotting

Image 3. Western blot analysis using ATF4 mouse mAb against K562 (1), A431 (2), HeLa (3), HEK293 (4), and Ramos (5) cell lysate.

Please check the [product details page](#) for more images. Overall 6 images are available for ABIN5542583.