



[Go to Product page](#)

Datasheet for ABIN5542585  
**anti-SERPINA1 antibody (AA 23-237)**

8 Images

### Overview

Quantity:	0.1 mg
Target:	SERPINA1
Binding Specificity:	AA 23-237
Reactivity:	Human
Host:	Mouse
Clonality:	Monoclonal
Conjugate:	This SERPINA1 antibody is un-conjugated
Application:	Western Blotting (WB), ELISA, Immunohistochemistry (IHC), Flow Cytometry (FACS), Immunocytochemistry (ICC)

### Product Details

Immunogen:	Purified recombinant fragment of human SERPINA1 (AA: 23-237) expressed in E. coli.
Clone:	5D1D2
Isotype:	IgG1
Purification:	purified

### Target Details

Target:	SERPINA1
Alternative Name:	SERPINA1 ( <a href="#">SERPINA1 Products</a> )
Background:	Description: The protein encoded by this gene is secreted and is a serine protease inhibitor

## Target Details

---

whose targets include elastase, plasmin, thrombin, trypsin, chymotrypsin, and plasminogen activator. Defects in this gene can cause emphysema or liver disease. Several transcript variants encoding the same protein have been found for this gene.,

Aliases: PI, A1A, AAT, PI1, A1AT, PRO2275, alpha1AT

---

Molecular Weight: 46.7 kDa

---

Gene ID: 5265

---

HGNC: 5265

## Application Details

---

Application Notes: ELISA: 1:10000, WB: 1:500 - 1:2000, IHC: 1:200 - 1:1000, ICC: 1:200 - 1:1000, FCM: 1:200 - 1:400

---

Restrictions: For Research Use only

## Handling

---

Format: Liquid

---

Buffer: Purified antibody in PBS with 0.05 % sodium azide

---

Preservative: Sodium azide

---

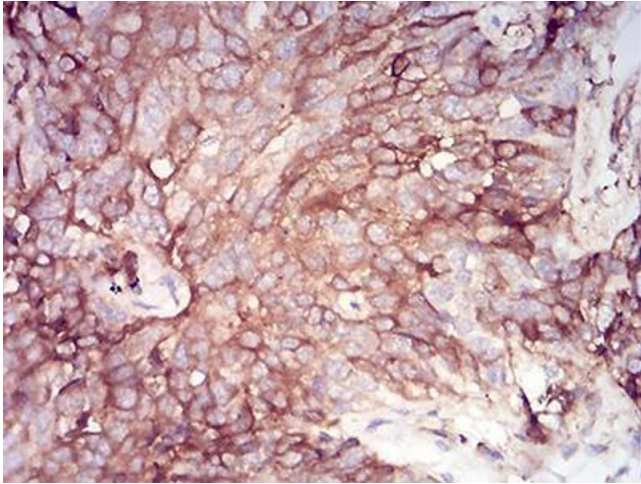
Precaution of Use: This product contains Sodium azide: a POISONOUS AND HAZARDOUS SUBSTANCE which should be handled by trained staff only.

---

Storage: 4 °C/-20 °C

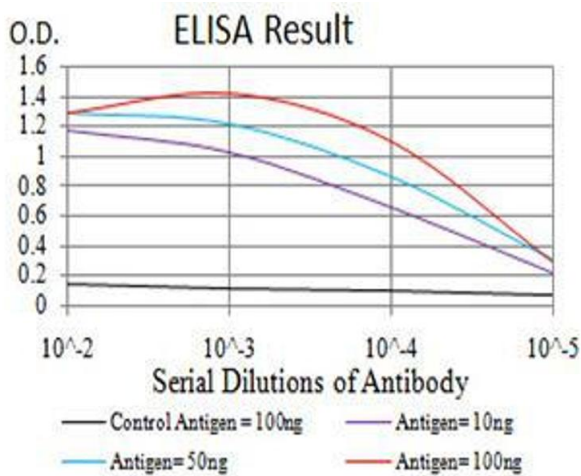
---

Storage Comment: 4°C, -20°C for long term storage



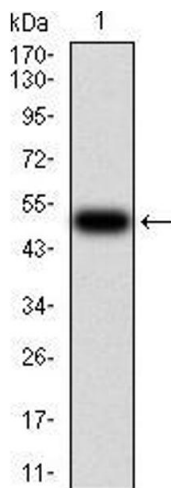
### Immunohistochemistry

**Image 1.** Immunohistochemical analysis of paraffin-embedded bladder cancer tissues using SERPINA1 mouse mAb with DAB staining.



### ELISA

**Image 2.** Black line: Control Antigen (100 ng), Purple line: Antigen (10 ng), Blue line: Antigen (50 ng), Red line: Antigen (100 ng)



### Western Blotting

**Image 3.** Western blot analysis using SERPINA1 mAb against human SERPINA1 (AA: 23-237) recombinant protein. (Expected MW is 50.3 kDa)

Please check the [product details page](#) for more images. Overall 8 images are available for ABIN5542585.