



[Go to Product page](#)

Datasheet for ABIN5542590
anti-CSF1R antibody (AA 20-152)

4 Images

Overview

Quantity:	0.1 mg
Target:	CSF1R
Binding Specificity:	AA 20-152
Reactivity:	Human
Host:	Mouse
Clonality:	Monoclonal
Conjugate:	This CSF1R antibody is un-conjugated
Application:	Western Blotting (WB), ELISA, Immunohistochemistry (IHC), Flow Cytometry (FACS), Immunocytochemistry (ICC)

Product Details

Immunogen:	Purified recombinant fragment of human CSF1R (AA: 20-152) expressed in E. coli.
Clone:	4C9G2
Isotype:	IgG1
Purification:	purified

Target Details

Target:	CSF1R
Alternative Name:	CSF1R (CSF1R Products)
Background:	Description: The protein encoded by this gene is the receptor for colony stimulating factor 1, a

Target Details

cytokine which controls the production, differentiation, and function of macrophages. This receptor mediates most if not all of the biological effects of this cytokine. Ligand binding activates the receptor kinase through a process of oligomerization and transphosphorylation. The encoded protein is a tyrosine kinase transmembrane receptor and member of the CSF1/PDGF receptor family of tyrosine-protein kinases. Mutations in this gene have been associated with a predisposition to myeloid malignancy. The first intron of this gene contains a transcriptionally inactive ribosomal protein L7 processed pseudogene oriented in the opposite direction.,

Aliases: FMS, CSFR, FIM2, HDLS, C-FMS, CD115, CSF-1R, M-CSF-R

Molecular Weight: 108 kDa

Gene ID: 1436

HGNC: 1436

Pathways: [RTK Signaling](#), [Inositol Metabolic Process](#), [Cell-Cell Junction Organization](#)

Application Details

Application Notes: ELISA: 1:10000, WB: 1:500 - 1:2000, IHC: , ICC: , FCM: 1:200 - 1:400

Restrictions: For Research Use only

Handling

Format: Liquid

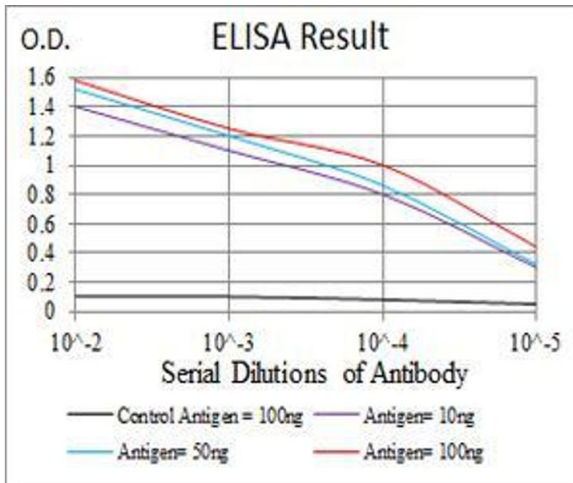
Buffer: Purified antibody in PBS with 0.05 % sodium azide

Preservative: Sodium azide

Precaution of Use: This product contains Sodium azide: a POISONOUS AND HAZARDOUS SUBSTANCE which should be handled by trained staff only.

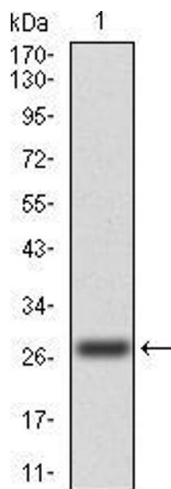
Storage: 4 °C/-20 °C

Storage Comment: 4°C, -20°C for long term storage



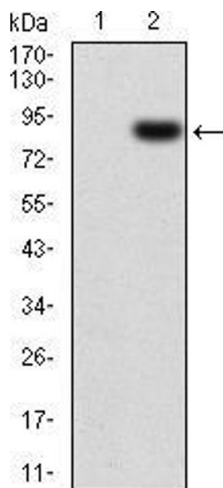
ELISA

Image 1. Black line: Control Antigen (100 ng), Purple line: Antigen(10 ng), Blue line: Antigen (50 ng), Red line: Antigen (100 ng),



Western Blotting

Image 2. Western blot analysis using CSF1R mAb against human CSF1R (AA: 20-152) recombinant protein. (Expected MW is 27.2 kDa)



Western Blotting

Image 3. Western blot analysis using CSF1R mAb against HEK293 (1) and CSF1R (AA: 20-152)-hlgGFc transfected HEK293 (2) cell lysate.

Please check the [product details page](#) for more images. Overall 4 images are available for ABIN5542590.