

Datasheet for ABIN5542598  
**anti-ATG2A antibody (AA 325-429)**



[Go to Product page](#)

4 Images

### Overview

Quantity:	0.1 mg
Target:	ATG2A
Binding Specificity:	AA 325-429
Reactivity:	Human
Host:	Mouse
Clonality:	Monoclonal
Conjugate:	This ATG2A antibody is un-conjugated
Application:	Western Blotting (WB), ELISA, Immunocytochemistry (ICC), Immunohistochemistry (IHC), Flow Cytometry (FACS)

### Product Details

Immunogen:	Purified recombinant fragment of human ATG2A (AA 325-429) expressed in E. Coli.
Clone:	4H8G3
Isotype:	IgG1

### Target Details

Target:	ATG2A
Alternative Name:	ATG2A ( <a href="#">ATG2A Products</a> )
Background:	ATG2A (Autophagy Related 2A) is a Protein Coding gene. An important paralog of this gene is ATG2B,

## Target Details

Molecular Weight: 212.8kDa

HGNC: 23130

## Application Details

Application Notes: ELISA: 1:10000, WB: 1:500 - 1:2000, IHC: , ICC: 1:200 - 1:1000, FCM:

Restrictions: For Research Use only

## Handling

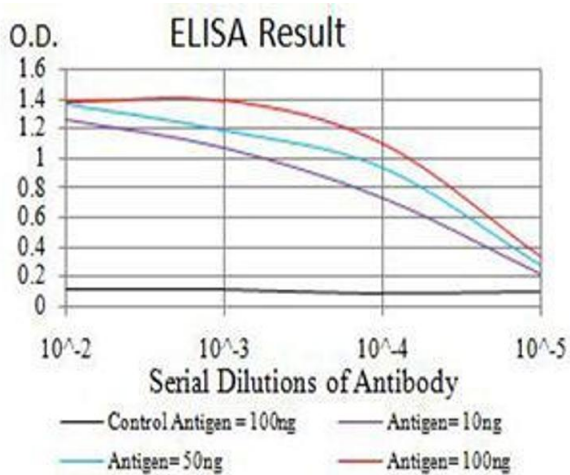
Format: Liquid

Buffer: PBS with 0.05 % sodium azide

Storage: 4 °C,-20 °C

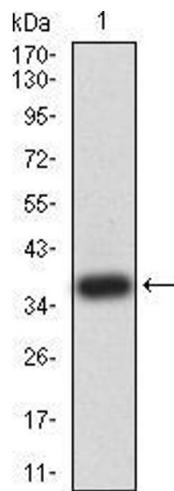
Storage Comment: 4°C, -20°C for long term storage

## Images



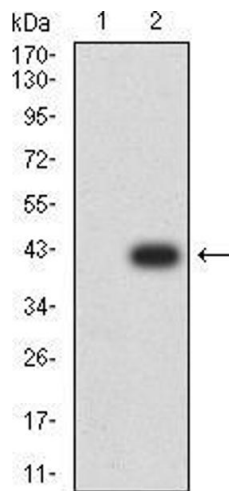
### ELISA

**Image 1.** Black line: Control Antigen (100 ng),Purple line: Antigen (10 ng), Blue line: Antigen (50 ng), Red line:Antigen (100 ng)



### Western Blotting

**Image 2.** Western blot analysis using ATG2A mAb against human ATG2A (AA: 325-429) recombinant protein. (Expected MW is 37.2 kDa)



### Western Blotting

**Image 3.** Western blot analysis using ATG2A mAb against HEK293 (1) and ATG2A (AA: 325-429)-hlgGFc transfected HEK293 (2) cell lysate.

Please check the [product details page](#) for more images. Overall 4 images are available for ABIN5542598.