

Datasheet for ABIN5542600  
**anti-APBA2 antibody (AA 15-158)**[Go to Product page](#)

## 4 Images

## Overview

Quantity:	0.1 mg
Target:	APBA2
Binding Specificity:	AA 15-158
Reactivity:	Human
Host:	Mouse
Clonality:	Monoclonal
Conjugate:	This APBA2 antibody is un-conjugated
Application:	ELISA, Western Blotting (WB), Immunohistochemistry (IHC), Immunocytochemistry (ICC), Flow Cytometry (FACS)

## Product Details

Immunogen:	Purified recombinant fragment of human APBA2 (AA: 15-158) expressed in E. coli.
Clone:	7G5G11
Isotype:	IgG1
Purification:	purified

## Target Details

Target:	APBA2
Alternative Name:	APBA2 ( <a href="#">APBA2 Products</a> )
Background:	Description: The protein encoded by this gene is a member of the X11 protein family. It is a

## Target Details

neuronal adapter protein that interacts with the Alzheimer's disease amyloid precursor protein (APP). It stabilizes APP and inhibits production of proteolytic APP fragments including the A beta peptide that is deposited in the brains of Alzheimer's disease patients. This gene product is believed to be involved in signal transduction processes. It is also regarded as a putative vesicular trafficking protein in the brain that can form a complex with the potential to couple synaptic vesicle exocytosis to neuronal cell adhesion. Multiple transcript variants encoding different isoforms have been found for this gene.,

Aliases: X11L, MINT2, LIN-10, HsT16821, X11-BETA, D15S1518E, MGC:14091

Molecular Weight:	82.5 kDa
-------------------	----------

Gene ID:	321
----------	-----

HGNC:	699
-------	-----

Pathways:	<a href="#">Synaptic Vesicle Exocytosis</a>
-----------	---

## Application Details

Application Notes:	ELISA: 1:10000, WB: 1:500 - 1:2000, IHC: , ICC: , FCM: 1:200 - 1:400
--------------------	--

Restrictions:	For Research Use only
---------------	-----------------------

## Handling

Format:	Liquid
---------	--------

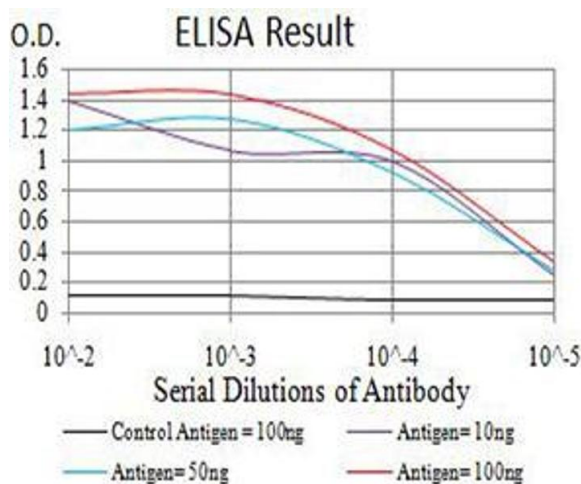
Buffer:	Purified antibody in PBS with 0.05 % sodium azide
---------	---

Preservative:	Sodium azide
---------------	--------------

Precaution of Use:	This product contains Sodium azide: a POISONOUS AND HAZARDOUS SUBSTANCE which should be handled by trained staff only.
--------------------	--

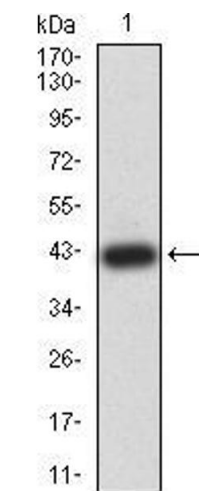
Storage:	4 °C/-20 °C
----------	-------------

Storage Comment:	4°C, -20°C for long term storage
------------------	----------------------------------



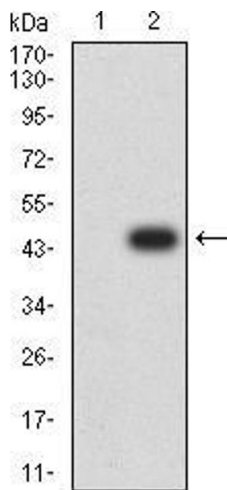
**ELISA**

**Image 1.** Black line: Control Antigen (100 ng),Purple line: Antigen (10 ng), Blue line: Antigen (50 ng), Red line:Antigen (100 ng)



**Western Blotting**

**Image 2.** Western blot analysis using APBA2 mAb against human APBA2 (AA: 15-158) recombinant protein. (Expected MW is 42 kDa)



**Western Blotting**

**Image 3.** Western blot analysis using APBA2 mAb against HEK293 (1) and APBA2 (AA: 15-158)-hlgGfC transfected HEK293 (2) cell lysate.

Please check the [product details page](#) for more images. Overall 4 images are available for ABIN5542600.