

Datasheet for ABIN5542601
anti-APBA2 antibody (AA 15-158)



[Go to Product page](#)

4 Images

Overview

Quantity:	100 µL
Target:	APBA2
Binding Specificity:	AA 15-158
Reactivity:	Human
Host:	Mouse
Clonality:	Monoclonal
Conjugate:	This APBA2 antibody is un-conjugated
Application:	ELISA, Immunocytochemistry (ICC)

Product Details

Purpose:	APBA2 Antibody
Immunogen:	Purified recombinant fragment of human APBA2 (AA: 15-158) expressed in E. Coli.
Clone:	1C12A4
Isotype:	IgG1
Purification:	Purified antibody

Target Details

Target:	APBA2
Alternative Name:	APBA2 (APBA2 Products)
Background:	Description: The protein encoded by this gene is a member of the X11 protein family. It is a

Target Details

neuronal adapter protein that interacts with the Alzheimer's disease amyloid precursor protein (APP). It stabilizes APP and inhibits production of proteolytic APP fragments including the A beta peptide that is deposited in the brains of Alzheimer's disease patients. This gene product is believed to be involved in signal transduction processes. It is also regarded as a putative vesicular trafficking protein in the brain that can form a complex with the potential to couple synaptic vesicle exocytosis to neuronal cell adhesion. Multiple transcript variants encoding different isoforms have been found for this gene.

Aliases: X11L, MINT2, LIN-10, HsT16821, X11-BETA, D15S1518E, MGC:14091

Molecular Weight: 82.5kDa

Gene ID: 321

HGNC: 80829

UniProt: [Q99767](#)

Pathways: [Synaptic Vesicle Exocytosis](#)

Application Details

Application Notes: ELISA: 1/10000
ICC: 1/50 - 1/200

Restrictions: For Research Use only

Handling

Format: Liquid

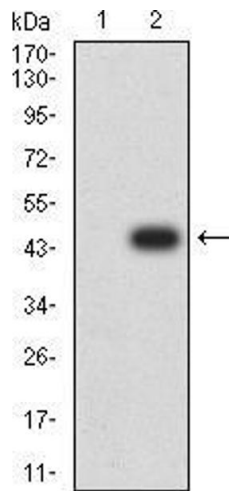
Buffer: Purified antibody in PBS with 0.05 % sodium azide.

Preservative: Sodium azide

Precaution of Use: This product contains Sodium azide: a POISONOUS AND HAZARDOUS SUBSTANCE which should be handled by trained staff only.

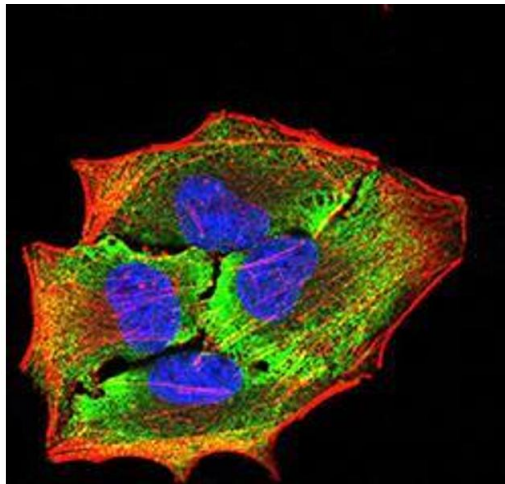
Storage: 4 °C,-20 °C

Storage Comment: Store at 4°C short term. Aliquot and store at -20°C long term. Avoid freeze/thaw cycles.



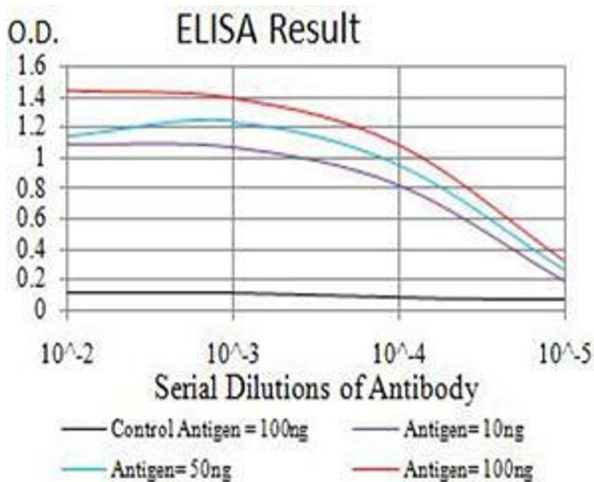
Western Blotting

Image 1. Western blot analysis using APBA2 mAb against HEK293 (1) and APBA2 (AA: 15-158)-hIgGFc transfected HEK293 (2) cell lysate.



Immunofluorescence

Image 2. Immunofluorescence analysis of HeLa cells using APBA2 mouse mAb (green). Blue: DRAQ5 fluorescent DNA dye. Red: Actin filaments have been labeled with Alexa Fluor-555 phalloidin. Secondary antibody from Fisher (Cat#: 35503)



ELISA

Image 3. Black line: Control Antigen (100 ng), Purple line: Antigen (10 ng), Blue line: Antigen (50 ng), Red line: Antigen (100 ng)

Please check the [product details page](#) for more images. Overall 4 images are available for ABIN5542601.