

Datasheet for ABIN5542606
anti-CDC37 antibody (AA 241-378)

5 Images

[Go to Product page](#)

Overview

Quantity:	0.1 mg
Target:	CDC37
Binding Specificity:	AA 241-378
Reactivity:	Human, Mouse
Host:	Mouse
Clonality:	Monoclonal
Conjugate:	This CDC37 antibody is un-conjugated
Application:	Western Blotting (WB), ELISA, Immunohistochemistry (IHC), Flow Cytometry (FACS), Immunocytochemistry (ICC)

Product Details

Immunogen:	Purified recombinant fragment of human CDC37 (AA: 241-378) expressed in E. coli.
Clone:	6B3B7
Isotype:	IgG2a
Purification:	purified

Target Details

Target:	CDC37
Alternative Name:	CDC37 (CDC37 Products)
Background:	Description: The protein encoded by this gene is highly similar to Cdc 37, a cell division cycle

Target Details

control protein of *Sacchromyces cerevisiae*. This protein is a molecular chaperone with specific function in cell signal transduction. It has been shown to form complex with Hsp90 and a variety of protein kinases including CDK4, CDK6, SRC, RAF-1, MOK, as well as eIF2 alpha kinases. It is thought to play a critical role in directing Hsp90 to its target kinases.,
Aliases: P50CDC37

Molecular Weight:	44.5 kDa
-------------------	----------

Gene ID:	11140
----------	-------

HGNC:	80829
-------	-------

Application Details

Application Notes:	ELISA: 1:10000, WB: 1:500 - 1:2000, IHC: , ICC: , FCM: 1:200 - 1:400
--------------------	--

Restrictions:	For Research Use only
---------------	-----------------------

Handling

Format:	Liquid
---------	--------

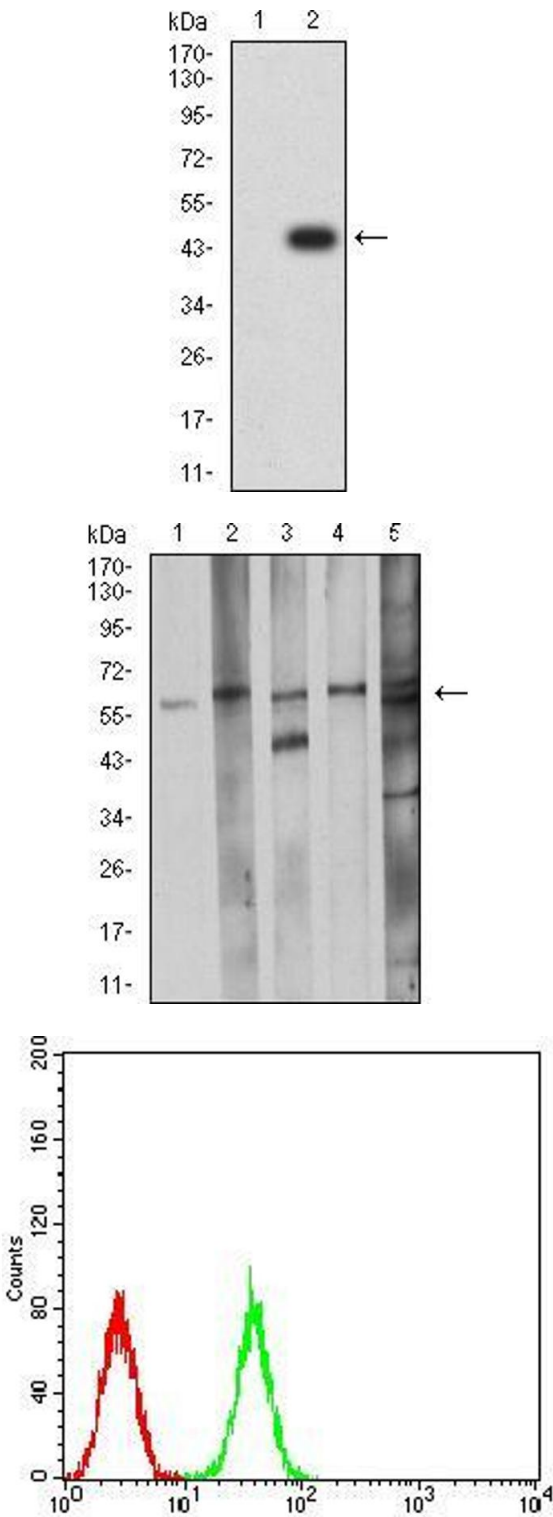
Buffer:	Purified antibody in PBS with 0.05 % sodium azide
---------	---

Preservative:	Sodium azide
---------------	--------------

Precaution of Use:	This product contains Sodium azide: a POISONOUS AND HAZARDOUS SUBSTANCE which should be handled by trained staff only.
--------------------	--

Storage:	4 °C/-20 °C
----------	-------------

Storage Comment:	4°C, -20°C for long term storage
------------------	----------------------------------



Western Blotting

Image 1. Western blot analysis using CDC37 mAb against HEK293 (1) and CDC37 (AA: 241-378)-hlgGFc transfected HEK293 (2) cell lysate.

Western Blotting

Image 2. Western blot analysis using CDC37 mouse mAb against K562 (1), LNcap (2), A431 (3), HEK293 (4), and C2C12 (5) cell lysate.

Flow Cytometry

Image 3. Flow cytometric analysis of K562 cells using CDC37 mouse mAb (green) and negative control (red).

Please check the [product details page](#) for more images. Overall 5 images are available for ABIN5542606.