

Datasheet for ABIN5542623
anti-HLA-DRA antibody (AA 26-254)[Go to Product page](#)

6 Images

Overview

Quantity:	0.1 mg
Target:	HLA-DRA
Binding Specificity:	AA 26-254
Reactivity:	Human
Host:	Mouse
Clonality:	Monoclonal
Conjugate:	This HLA-DRA antibody is un-conjugated
Application:	Western Blotting (WB), Immunohistochemistry (IHC), Flow Cytometry (FACS), ELISA, Immunocytochemistry (ICC)

Product Details

Immunogen:	Purified recombinant fragment of human HLA-DRA (AA: 26-254) expressed in E. coli.
Clone:	1C11A5
Isotype:	IgG2b
Purification:	purified

Target Details

Target:	HLA-DRA
Alternative Name:	HLA-DRA (HLA-DRA Products)
Background:	Description: HLA-DRA is one of the HLA class II alpha chain paralogues. This class II molecule

Target Details

is a heterodimer consisting of an alpha and a beta chain, both anchored in the membrane. It plays a central role in the immune system by presenting peptides derived from extracellular proteins. Class II molecules are expressed in antigen presenting cells (APC: B lymphocytes, dendritic cells, macrophages). The alpha chain is approximately 33-35 kDa and its gene contains 5 exons. Exon 1 encodes the leader peptide, exons 2 and 3 encode the two extracellular domains, and exon 4 encodes the transmembrane domain and the cytoplasmic tail. DRA does not have polymorphisms in the peptide binding part and acts as the sole alpha chain for DRB1, DRB3, DRB4 and DRB5. ,
Aliases: MLRW, HLA-DRA1

Molecular Weight:	28.6 kDa
-------------------	----------

Gene ID:	3122
----------	------

HGNC:	3858
-------	------

Pathways:	TCR Signaling , CXCR4-mediated Signaling Events , Human Leukocyte Antigen (HLA) in Adaptive Immune Response
-----------	---

Application Details

Application Notes:	ELISA: 1:10000, WB: 1:500 - 1:2000, IHC: , ICC: 1:100 - 1:500, FCM: 1:200 - 1:400
--------------------	---

Restrictions:	For Research Use only
---------------	-----------------------

Handling

Format:	Liquid
---------	--------

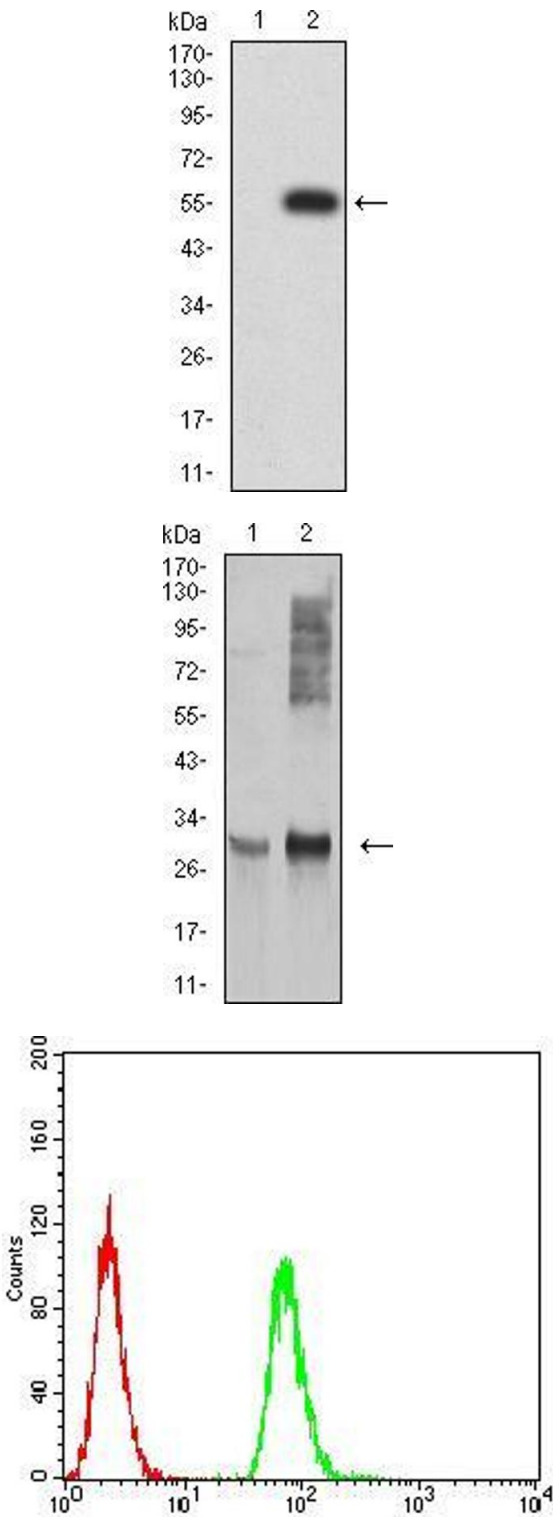
Buffer:	Purified antibody in PBS with 0.05 % sodium azide
---------	---

Preservative:	Sodium azide
---------------	--------------

Precaution of Use:	This product contains Sodium azide: a POISONOUS AND HAZARDOUS SUBSTANCE which should be handled by trained staff only.
--------------------	--

Storage:	4 °C/-20 °C
----------	-------------

Storage Comment:	4°C, -20°C for long term storage
------------------	----------------------------------



Western Blotting

Image 1. Western blot analysis using HLA-DRA mAb against HEK293 (1) and HLA-DRA (AA: 26-254)-hlgGFc transfected HEK293 (2) cell lysate.

Western Blotting

Image 2. Western blot analysis using HLA-DRA mouse mAb against Ramos (1), and Raji (2) cell lysate.

Flow Cytometry

Image 3. Flow cytometric analysis of MCF-7 cells using HLA-DRA mouse mAb (green) and negative control (red).

Please check the [product details page](#) for more images. Overall 6 images are available for ABIN5542623.