

Datasheet for ABIN5542626
anti-KPNA2 antibody (AA 1-530)

8 Images

[Go to Product page](#)

Overview

Quantity:	0.1 mg
Target:	KPNA2
Binding Specificity:	AA 1-530
Reactivity:	Human, Mouse
Host:	Mouse
Clonality:	Monoclonal
Conjugate:	This KPNA2 antibody is un-conjugated
Application:	Western Blotting (WB), ELISA, Immunohistochemistry (IHC), Immunocytochemistry (ICC), Flow Cytometry (FACS)

Product Details

Immunogen:	Purified recombinant fragment of human KPNA2 (AA: 1-530) expressed in E. coli.
Clone:	1E8B7
Isotype:	IgG1
Purification:	purified

Target Details

Target:	KPNA2
Alternative Name:	KPNA2 (KPNA2 Products)
Background:	Description: The import of proteins into the nucleus is a process that involves at least 2 steps.

Target Details

The first is an energy-independent docking of the protein to the nuclear envelope and the second is an energy-dependent translocation through the nuclear pore complex. Imported proteins require a nuclear localization sequence (NLS) which generally consists of a short region of basic amino acids or 2 such regions spaced about 10 amino acids apart. Proteins involved in the first step of nuclear import have been identified in different systems. These include the *Xenopus* protein importin and its yeast homolog, SRP1 (a suppressor of certain temperature-sensitive mutations of RNA polymerase I in *Saccharomyces cerevisiae*), which bind to the NLS. KPNA2 protein interacts with the NLSs of DNA helicase Q1 and SV40 T antigen and may be involved in the nuclear transport of proteins. KPNA2 also may play a role in V(D)J recombination. ,

Aliases: QIP2, RCH1, IPOA1, SRP1alpha

Molecular Weight: 58 kDa

Gene ID: 3838

HGNC: 3838

Pathways: [M Phase](#), [Protein targeting to Nucleus](#)

Application Details

Application Notes: ELISA: 1:10000, WB: 1:500 - 1:2000, IHC: 1:200 - 1:1000, ICC: 1:200 - 1:1000, FCM: 1:200 - 1:400

Restrictions: For Research Use only

Handling

Format: Liquid

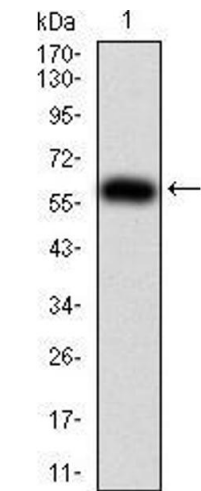
Buffer: Purified antibody in PBS with 0.05 % sodium azide

Preservative: Sodium azide

Precaution of Use: This product contains Sodium azide: a POISONOUS AND HAZARDOUS SUBSTANCE which should be handled by trained staff only.

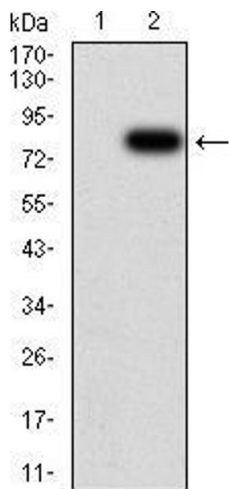
Storage: 4 °C/-20 °C

Storage Comment: 4°C, -20°C for long term storage



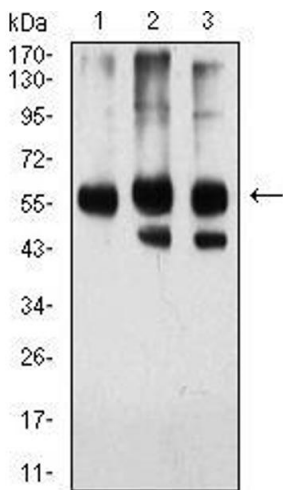
Western Blotting

Image 1. Western blot analysis using KPNA2 mAb against human KPNA2 (AA: 1-530) recombinant protein. (Expected MW is 60.3 kDa)



Western Blotting

Image 2. Western blot analysis using KPNA2 mAb against HEK293 (1) and KPNA2 (AA: 1-530)-hlgGfC transfected HEK293 (2) cell lysate.



Western Blotting

Image 3. Western blot analysis using KPNA2 mouse mAb against HeLa (1), HEK293 (2), and NIH/3T3 (3) cell lysate.

Please check the [product details page](#) for more images. Overall 8 images are available for ABIN5542626.