

Datasheet for ABIN5542628
anti-IL28A antibody (AA 1-200)



[Go to Product page](#)

4 Images

Overview

Quantity:	100 µL
Target:	IL28A
Binding Specificity:	AA 1-200
Reactivity:	Human
Host:	Mouse
Clonality:	Monoclonal
Conjugate:	This IL28A antibody is un-conjugated
Application:	ELISA, Immunocytochemistry (ICC)

Product Details

Purpose:	IL28A Antibody
Immunogen:	Purified recombinant fragment of human IL28A (AA: 1-200) expressed in E. Coli.
Clone:	6H9E6
Isotype:	IgG1
Purification:	Purified antibody

Target Details

Target:	IL28A
Alternative Name:	IL28A (IL28A Products)
Background:	Description: This gene encodes a cytokine distantly related to type I interferons and the IL-10

Target Details

family. This gene, interleukin 28B (IL28B), and interleukin 29 (IL29) are three closely related cytokine genes that form a cytokine gene cluster on a chromosomal region mapped to 19q13. Expression of the cytokines encoded by the three genes can be induced by viral infection. All three cytokines have been shown to interact with a heterodimeric class II cytokine receptor that consists of interleukin 10 receptor, beta (IL10RB) and interleukin 28 receptor, alpha (IL28RA).

Aliases: IFNL2, IL-28A

Molecular Weight: 22.3kDa

Gene ID: 282616

HGNC: 282616

UniProt: [Q8IZJ0](#)

Application Details

Application Notes: ELISA: 1/10000
ICC: 1/200 - 1/1000

Restrictions: For Research Use only

Handling

Format: Liquid

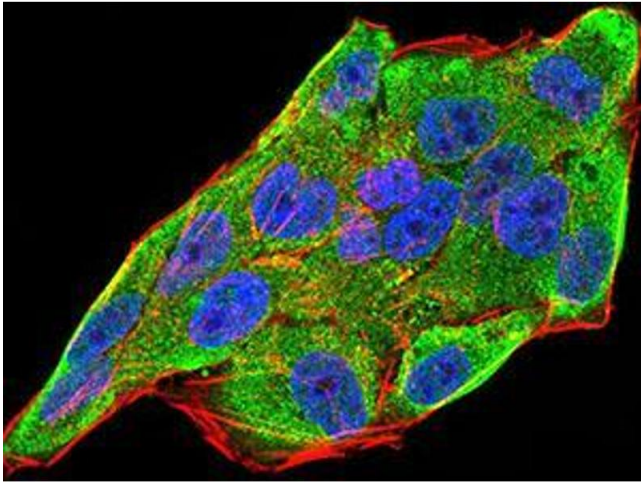
Buffer: Purified antibody in PBS with 0.05 % sodium azide.

Preservative: Sodium azide

Precaution of Use: This product contains Sodium azide: a POISONOUS AND HAZARDOUS SUBSTANCE which should be handled by trained staff only.

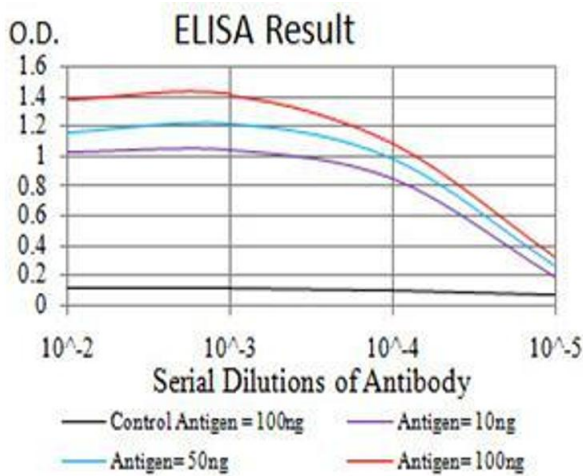
Storage: 4 °C, -20 °C

Storage Comment: Store at 4°C short term. Aliquot and store at -20°C long term. Avoid freeze/thaw cycles.



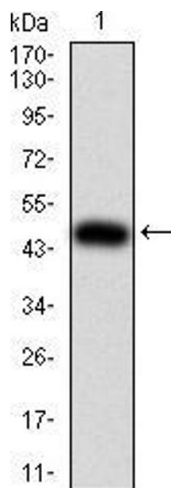
Immunofluorescence

Image 1. Immunofluorescence analysis of HeLa cells using IL28A mouse mAb (green). Blue: DRAQ5 fluorescent DNA dye. Red: Actin filaments have been labeled with Alexa Fluor-555 phalloidin. Secondary antibody from Fisher (Cat#: 35503)



ELISA

Image 2. Black line: Control Antigen (100 ng), Purple line: Antigen (10 ng), Blue line: Antigen (50 ng), Red line: Antigen (100 ng)



Western Blotting

Image 3. Western blot analysis using IL28A mAb against human IL28A (AA: 1-200) recombinant protein. (Expected MW is 48.2 kDa)

Please check the [product details page](#) for more images. Overall 4 images are available for ABIN5542628.