

Datasheet for ABIN5542640  
**anti-CFHR5 antibody (AA 344-569)**



[Go to Product page](#)

8 Images

## Overview

Quantity:	100 µL
Target:	CFHR5
Binding Specificity:	AA 344-569
Reactivity:	Human
Host:	Mouse
Clonality:	Monoclonal
Conjugate:	This CFHR5 antibody is un-conjugated
Application:	Western Blotting (WB), ELISA, Flow Cytometry (FACS), Immunohistochemistry (IHC), Immunocytochemistry (ICC)

## Product Details

Purpose:	CFHR5 Antibody
Immunogen:	Purified recombinant fragment of human CFHR5 (AA: 344-569) expressed in E. Coli.
Clone:	3A10A5
Isotype:	IgG2a
Purification:	Purified antibody

## Target Details

Target:	CFHR5
Alternative Name:	CFHR5 ( <a href="#">CFHR5 Products</a> )

## Target Details

---

**Background:** Description: This gene is a member of a small complement factor H (CFH) gene cluster on chromosome 1. Each member of this gene family contains multiple short consensus repeats (SCRs) typical of regulators of complement activation. The protein encoded by this gene has nine SCRs with the first two repeats having heparin binding properties, a region within repeats 5-7 having heparin binding and C reactive protein binding properties, and the C-terminal repeats being similar to a complement component 3 b (C3b) binding domain. This protein co-localizes with C3, binds C3b in a dose-dependent manner, and is recruited to tissues damaged by C-reactive protein. Allelic variations in this gene have been associated, but not causally linked, with two different forms of kidney disease: membranoproliferative glomerulonephritis type II (MPGNII) and hemolytic uraemic syndrome (HUS).

Aliases: FHR5, CFHL5, FHR-5, CFHR5D

---

**Molecular Weight:** 64.4kDa

---

**Gene ID:** 81494

---

**HGNC:** 81494

---

**UniProt:** [Q9BXR6](#)

## Application Details

---

**Application Notes:** ELISA: 1/10000  
FCM: 1/200 - 1/400  
ICC: 1/200 - 1/1000

---

**Restrictions:** For Research Use only

## Handling

---

**Format:** Liquid

---

**Buffer:** Purified antibody in PBS with 0.05 % sodium azide.

---

**Preservative:** Sodium azide

---

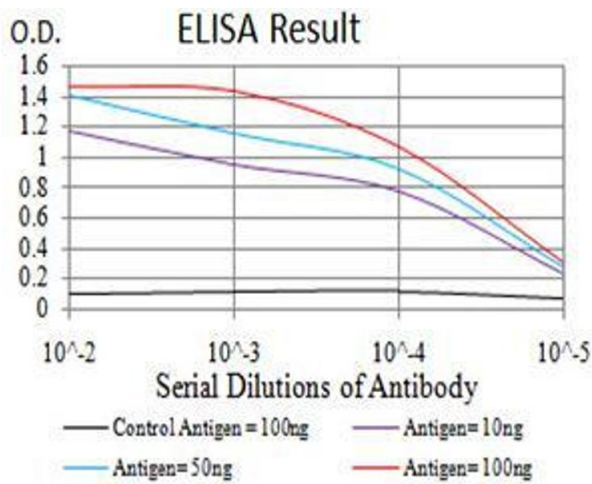
**Precaution of Use:** This product contains Sodium azide: a POISONOUS AND HAZARDOUS SUBSTANCE which should be handled by trained staff only.

---

**Storage:** 4 °C, -20 °C

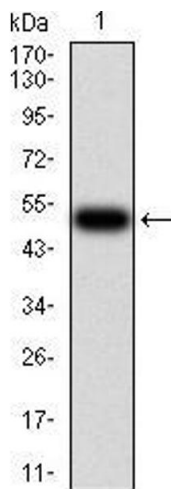
---

**Storage Comment:** Store at 4°C short term. Aliquot and store at -20°C long term. Avoid freeze/thaw cycles.



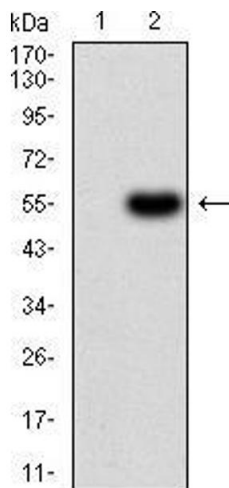
**ELISA**

**Image 1.** Black line: Control Antigen (100 ng),Purple line: Antigen (10 ng), Blue line: Antigen (50 ng), Red line:Antigen (100 ng)



**Western Blotting**

**Image 2.** Western blot analysis using CFHR5 mAb against human CFHR5 (AA: 344-569) recombinant protein. (Expected MW is 51.8 kDa)



**Western Blotting**

**Image 3.** Western blot analysis using CFHR5 mAb against HEK293 (1) and CFHR5 (AA: 344-569)-hlgGFc transfected HEK293 (2) cell lysate.

Please check the [product details page](#) for more images. Overall 8 images are available for ABIN5542640.