

Datasheet for ABIN5542641
anti-KDM6A antibody (AA 1252-1401)[Go to Product page](#)

4 Images

Overview

Quantity:	0.1 mg
Target:	KDM6A
Binding Specificity:	AA 1252-1401
Reactivity:	Human
Host:	Mouse
Clonality:	Monoclonal
Conjugate:	This KDM6A antibody is un-conjugated
Application:	Western Blotting (WB), ELISA, Immunohistochemistry (IHC), Immunocytochemistry (ICC), Flow Cytometry (FACS)

Product Details

Immunogen:	Purified recombinant fragment of human KDM6A (AA: 1252-1401) expressed in E. coli.
Clone:	5C2A9
Isotype:	IgG2a
Purification:	purified

Target Details

Target:	KDM6A
Alternative Name:	KDM6A (KDM6A Products)
Background:	Description: This gene is located on the X chromosome and is the corresponding locus to a Y-

Target Details

linked gene which encodes a tetratricopeptide repeat (TPR) protein. The encoded protein of this gene contains a JmjC-domain and catalyzes the demethylation of tri/dimethylated histone H3. Multiple alternatively spliced transcript variants have been found for this gene.,
Aliases: UTX, KABUK2, bA386N14.2

Molecular Weight: 154 kDa

Gene ID: 7403

HGNC: 7403

Pathways: [Tube Formation](#), [Warburg Effect](#)

Application Details

Application Notes: ELISA: 1:10000, WB: 1:500 - 1:2000, IHC: , ICC: , FCM: 1:200 - 1:400

Restrictions: For Research Use only

Handling

Format: Liquid

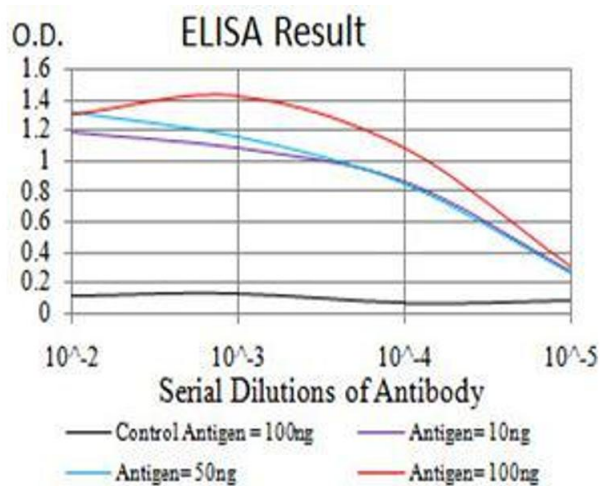
Buffer: Purified antibody in PBS with 0.05 % sodium azide

Preservative: Sodium azide

Precaution of Use: This product contains Sodium azide: a POISONOUS AND HAZARDOUS SUBSTANCE which should be handled by trained staff only.

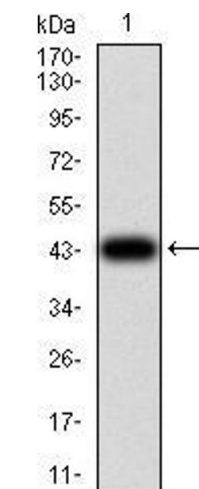
Storage: 4 °C/-20 °C

Storage Comment: 4°C, -20°C for long term storage



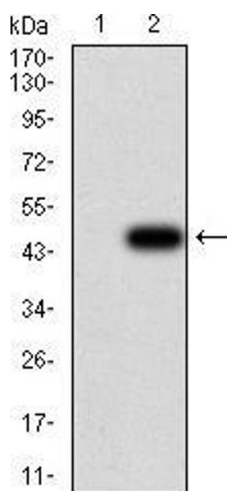
ELISA

Image 1. Black line: Control Antigen (100 ng),Purple line: Antigen (10 ng), Blue line: Antigen (50 ng), Red line:Antigen (100 ng)



Western Blotting

Image 2. Western blot analysis using KDM6A mAb against human KDM6A (AA: 1252-1401) recombinant protein. (Expected MW is 43.4 kDa)



Western Blotting

Image 3. Western blot analysis using KDM6A mAb against HEK293 (1) and KDM6A (AA: 1252-1401)-hlgGfc transfected HEK293 (2) cell lysate.

Please check the [product details page](#) for more images. Overall 4 images are available for ABIN5542641.